

TRACKING
THE FIELD

Funder Support for Health Care Transformation

THREE KEY TAKEAWAYS

1

Health equity is the most common priority issue for respondents and the one they most reported devoting “substantial” grantmaking resources towards. The types of grants being supported reflects a more trust-based philanthropic approach (i.e., most respondents indicated that they are providing general purpose or operating support and technical assistance or capacity-building grants).

2

Workforce is a high priority issue for health funder respondents. Most respondents supporting workforce efforts (55 percent) reported being devoted to both workforce development and workforce capacity and support.

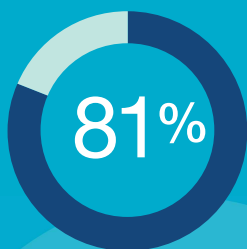
3

Issues relating to older adults, end-of-life, serious illness care, health care payment reform, and health care quality are least funded among respondents.

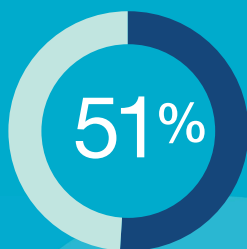
Findings based on a survey of 224 GIH Funding Partner organizations with a response rate of 25 percent.

TOP PRIORITY ISSUES FOR GRANTMAKERS (N=57)

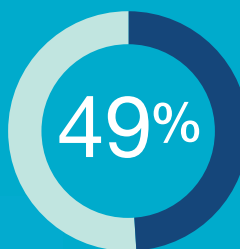
The following are the most common issues that grantmakers indicated are priorities for their organization (i.e., part of their mission, funding issue areas, etc.).



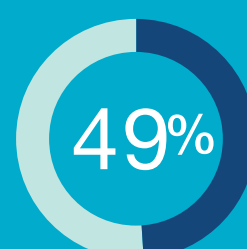
HEALTH EQUITY



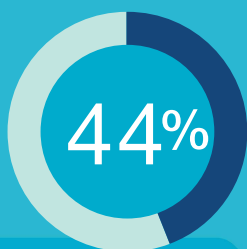
WORKFORCE DEVELOPMENT



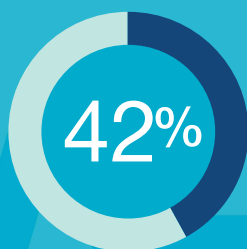
WORKFORCE CAPACITY AND SUPPORT



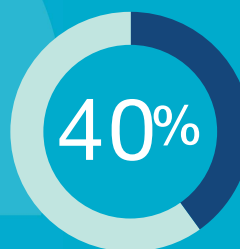
MEDICAID



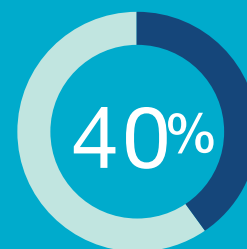
PERSON-CENTERED OR WHOLE PERSON CARE



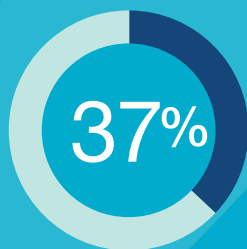
PRIMARY CARE



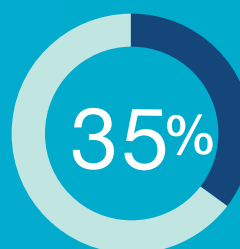
HEALTH CARE QUALITY



CARE COORDINATION



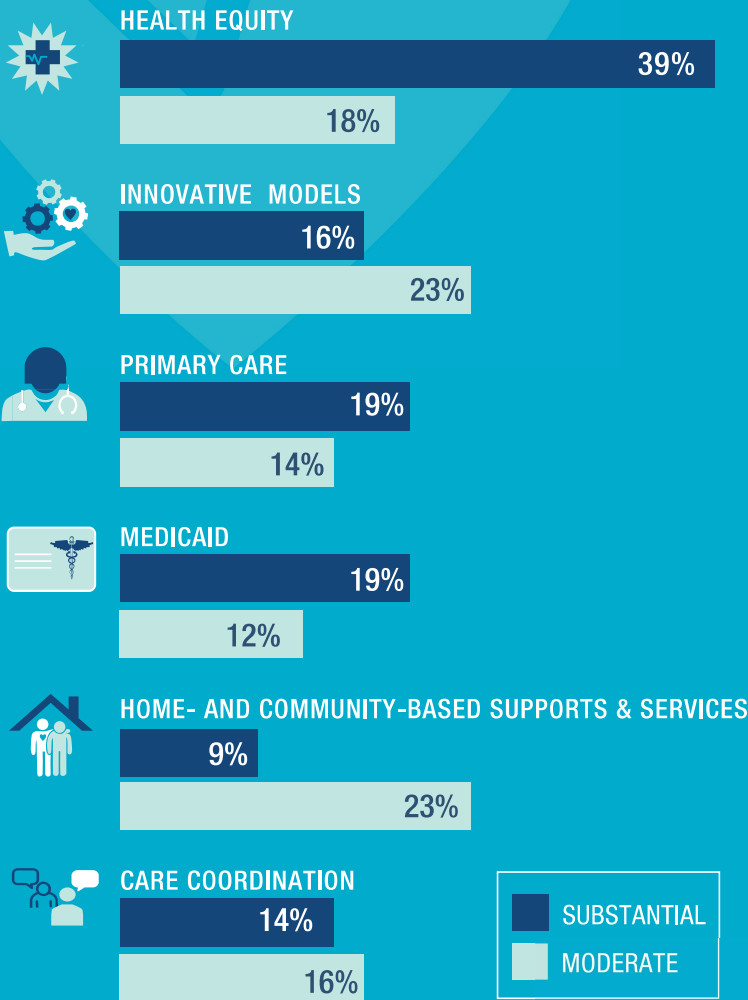
TELEHEALTH AND TELEMEDICINE



INNOVATIVE MODELS

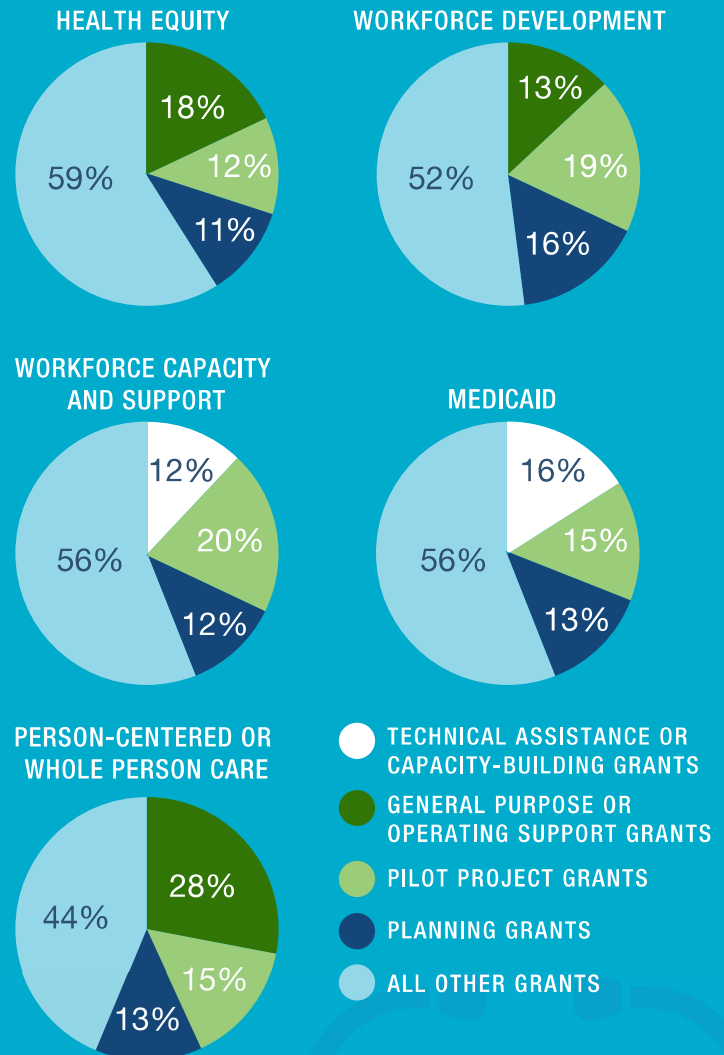
PRIORITY ISSUES RECEIVING MOST MODERATE-TO-SUBSTANTIAL FUNDING FROM FUNDERS (N=57)

The following are the issue areas that grantmakers indicated were receiving the most combined “substantial” and “moderate” levels of funding from their organization.



MOST COMMON TYPES OF GRANTS MADE IN TOP PRIORITY ISSUES (N=57)

The following is a breakdown of the kinds of grants funders are making within the top-5 priority areas.



MOST COMMON ISSUES NOT CURRENTLY RECEIVING FUNDING (N=57)

Below are the most common issue areas that grantmakers indicated as receiving “no funding” from their organizations at this time.



Results reflect respondents' selections from a set of predetermined issue areas.



This infographic summarizes the responses to a Grantmakers In Health funder poll, conducted October 2022, on how philanthropy is supporting health care transformation efforts, especially those concerned with improving quality of life, coordinating complex care, and taking patient preferences into account. Support for this poll was provided by grants from California Health Care Foundation, Cambia Health Foundation, The John A. Hartford Foundation, The Fan Fox and Leslie R. Samuels Foundation, Stupski Foundation, and Gary and Mary West Foundation.