



NATIONAL LIBRARY OF MEDICINE



NLM 00107583 8

Qh  
x W723b  
1875  
atlas

DESCRIPTIVE ANATOMY OF TYPICAL ANIMALS

PREPARED FOR THE GUIDANCE AND USE OF STUDENTS OF COMPARATIVE ANATOMY.

By HENRY S. WILLIAMS, Ph. D., (Yale).

**No. 1. The BONES, LIGAMENTS & MUSCLES  
of the DOMESTIC CAT (*Felis catus* Linn).**

The Plates in this number are copies, reduced one-third from the outline plates in Hercule Straus-Durekheim's  
"Anatomie Descriptive et Comparative du Chat," Paris 1845, and prepared  
by the Osborne Photo-lithographic process.

NEW YORK  
G. P. PUTNAM'S SONS,  
Fourth Avenue and 23d Street.

**NOTE.**

The enclosed twelve plates are reduced  
copies of plates II to XIII of the originals in  
Straus-Durekheim's work.

See note page VII of text.

Qh  
W723b  
f. 1875  
atlas.



87631

Karte von *Martes flammula*.

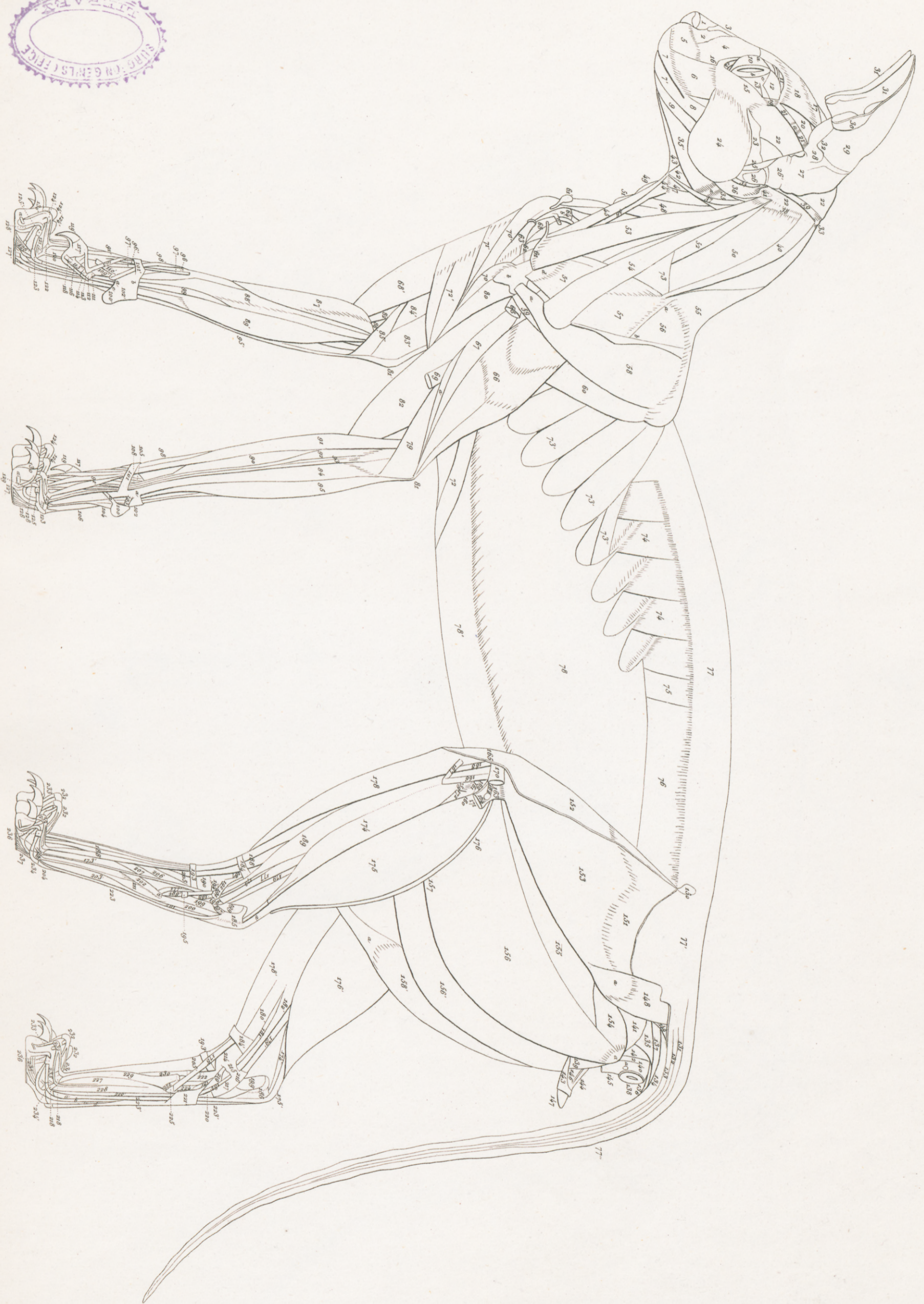




Tracé par M. DuRoi.



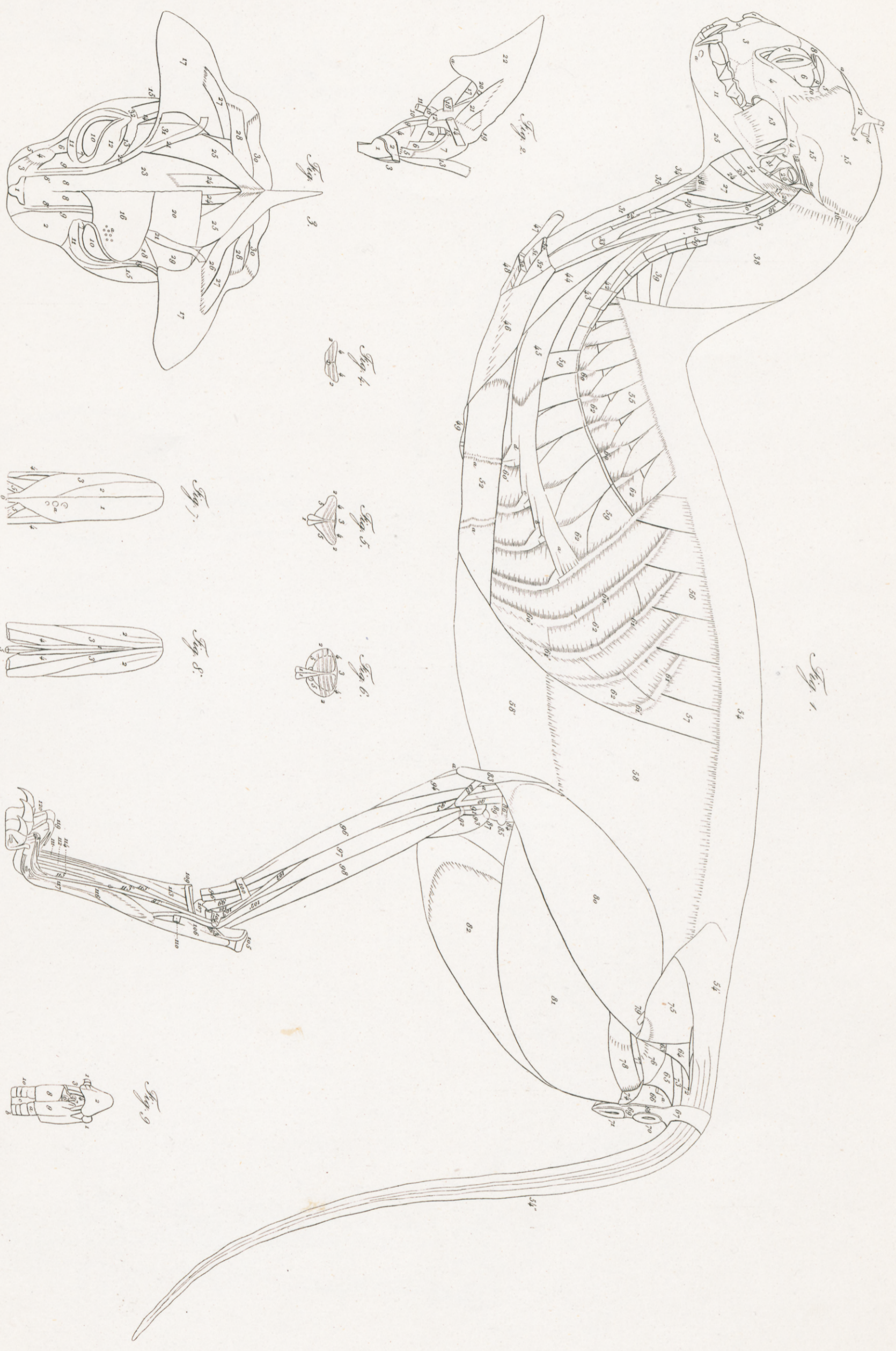




*Exhib. per. M. Dupuytren.*

AM. PHOTO-LITHOGRAPHIC CO. BY COURTESY OF THE SURGEON GENERAL'S OFFICE



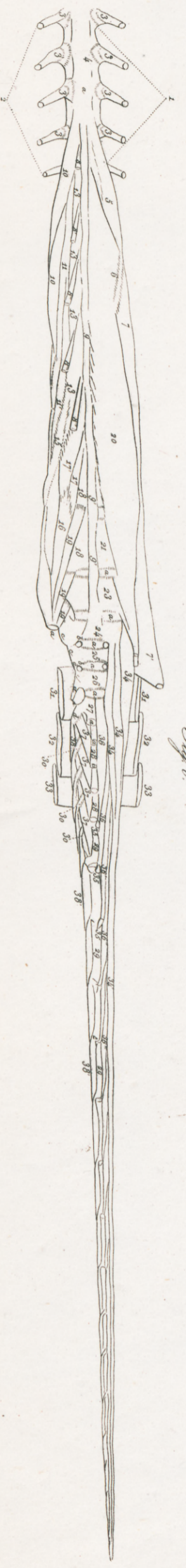
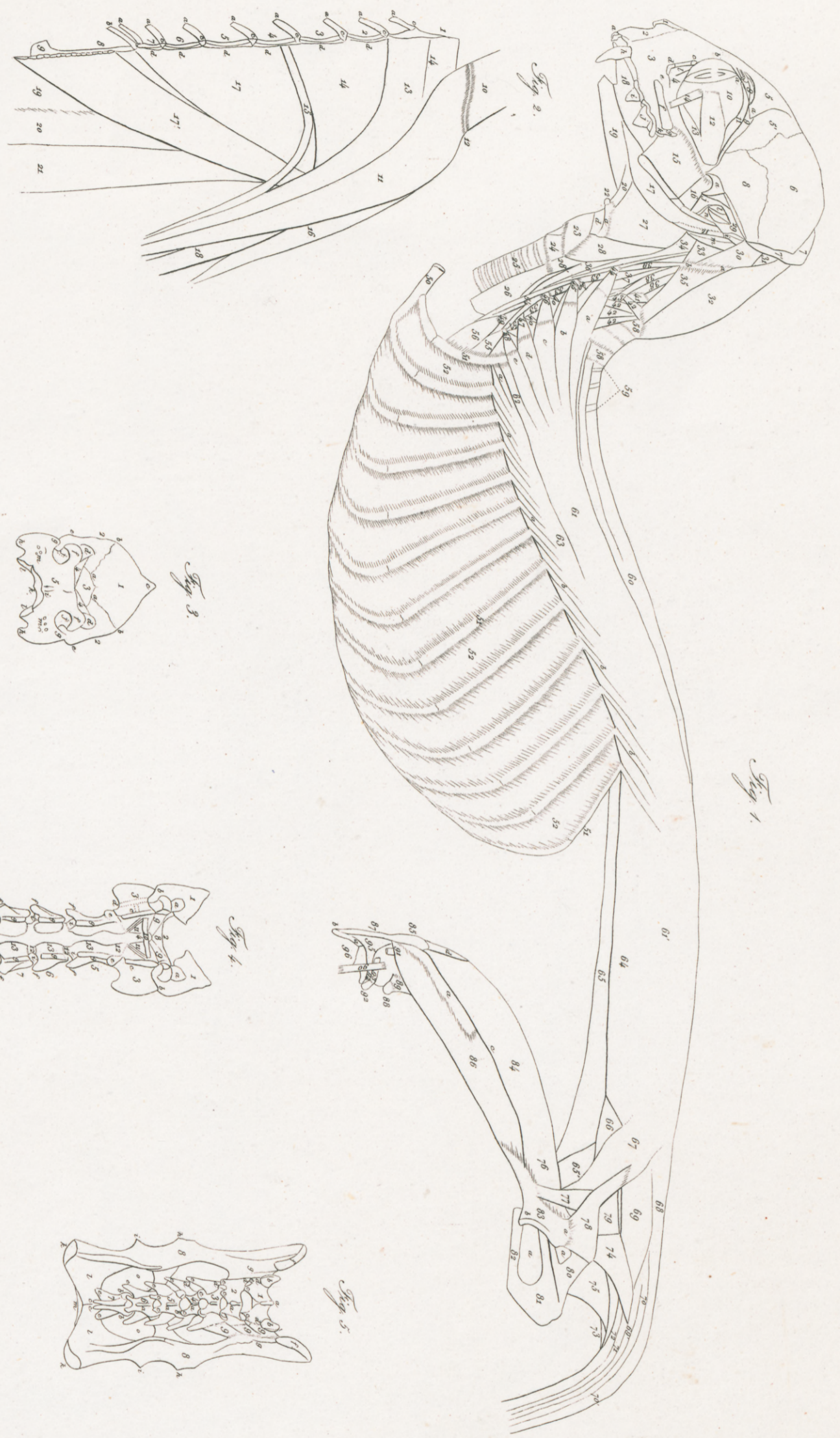


From the 'Mille Dispositum'.









Écrit par M. le Doyen.









Fig. 1.

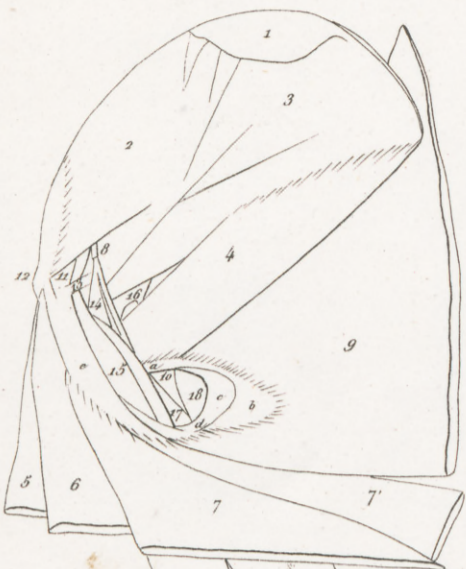


Fig. 2.

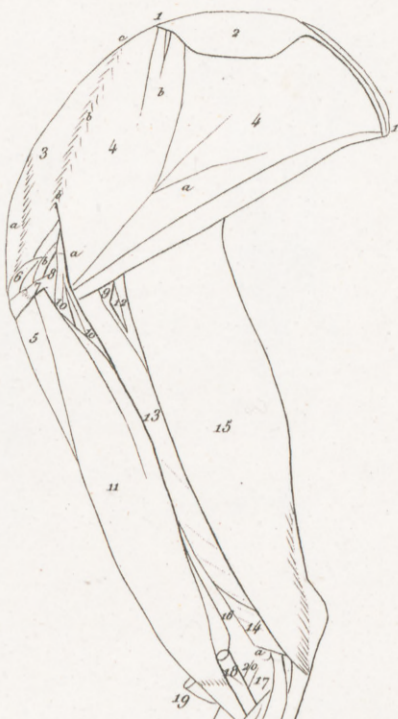


Fig. 3.

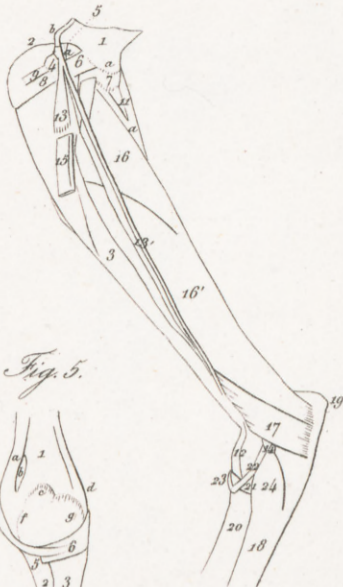


Fig. 4.

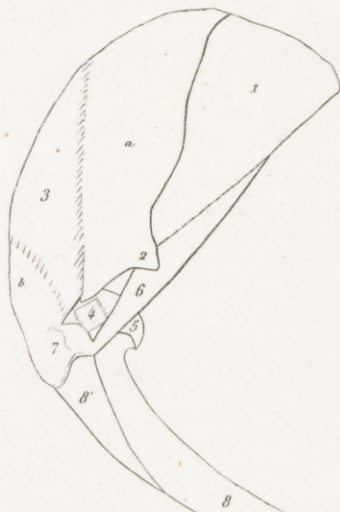


Fig. 5.



Fig. 14.

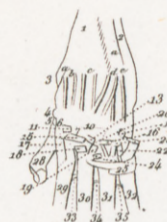


Fig. 15.

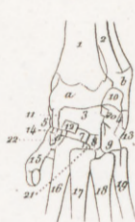


Fig. 16.

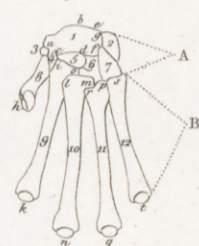


Fig. 6.



Fig. 17.

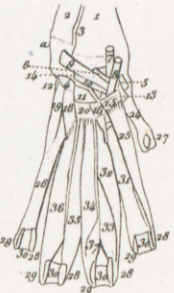


Fig. 18.

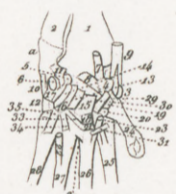


Fig. 19.

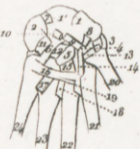


Fig. 20.

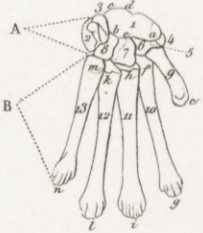


Fig. 21.

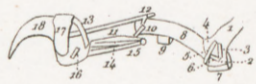


Fig. 22.

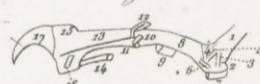


Fig. 7.

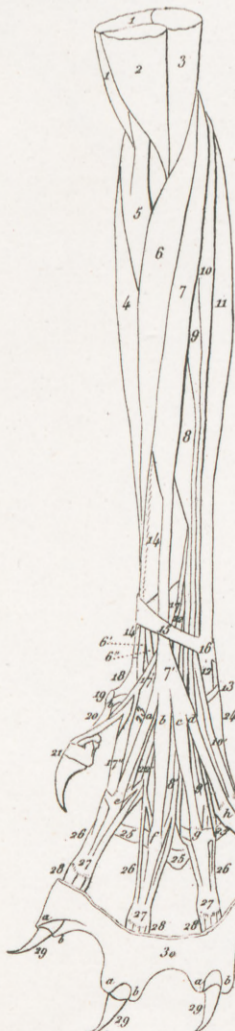


Fig. 8.

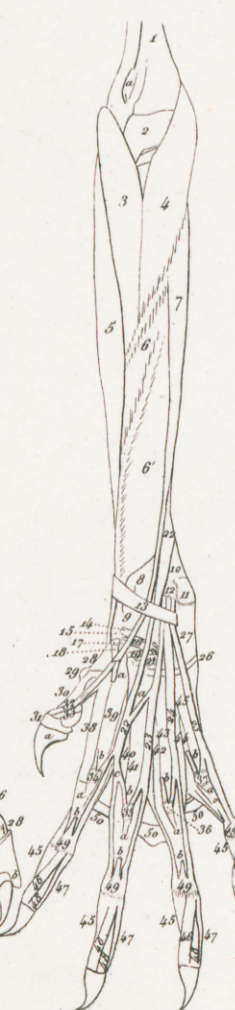


Fig. 9.



Fig. 10.



Fig. 11.

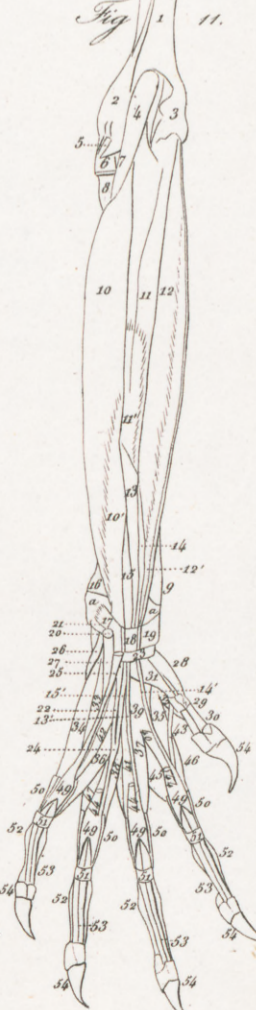


Fig. 12.

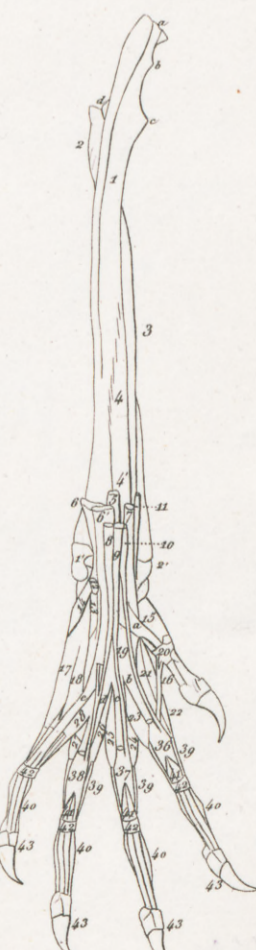
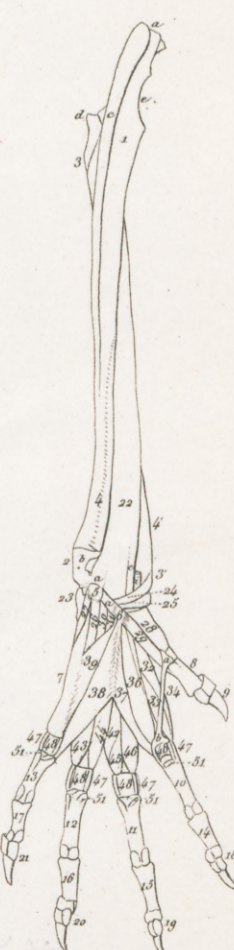


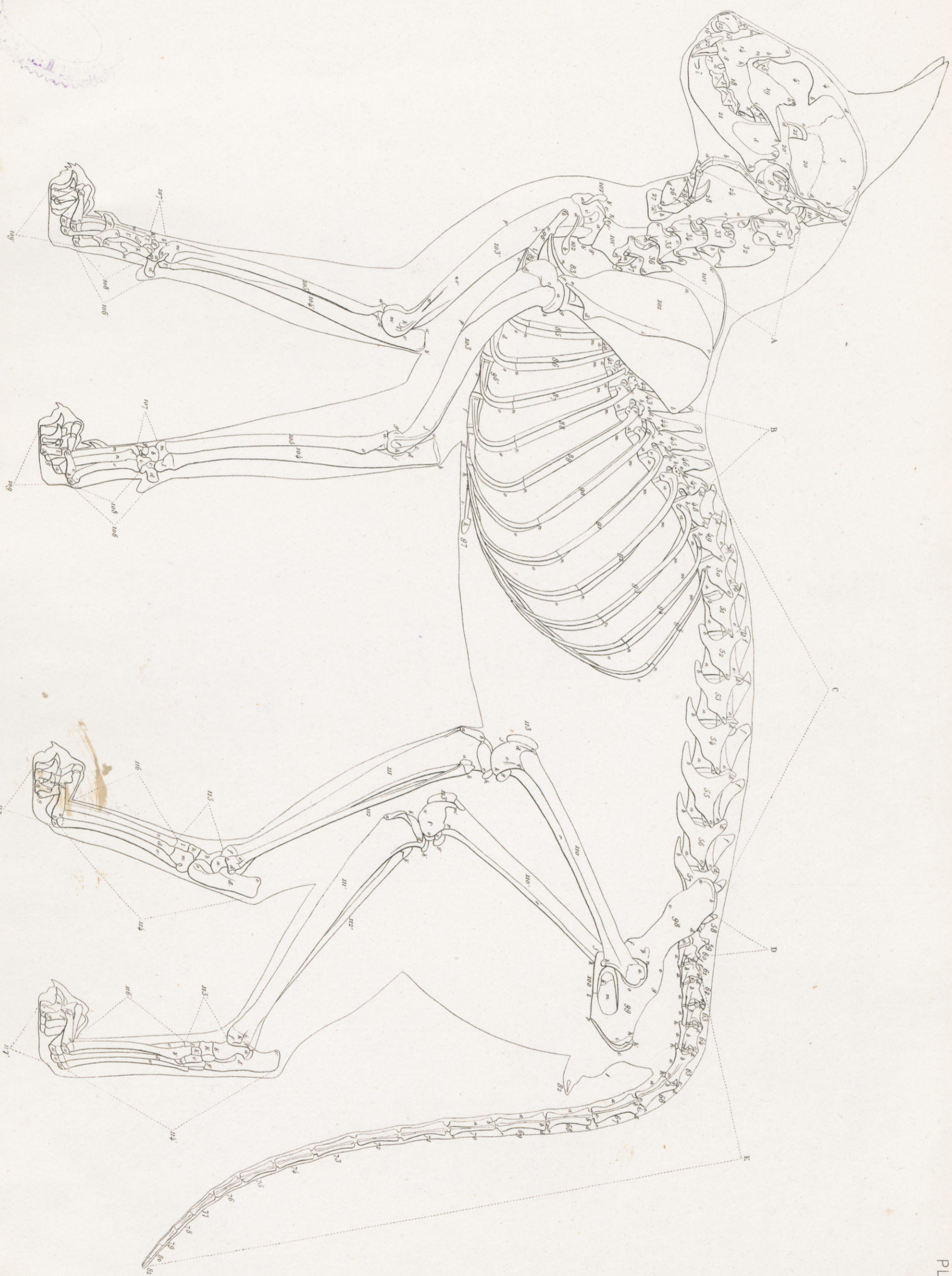
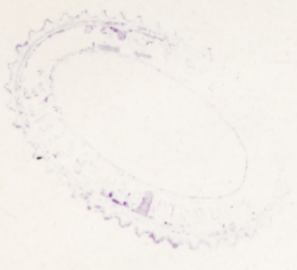
Fig. 13.







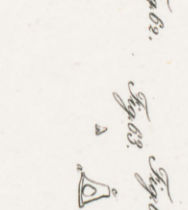
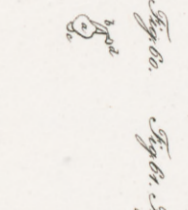
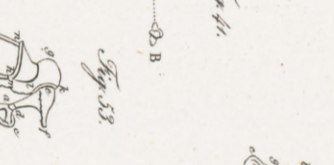
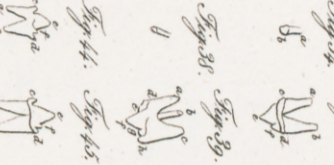
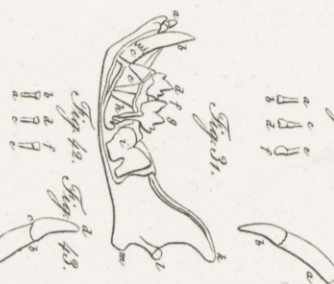
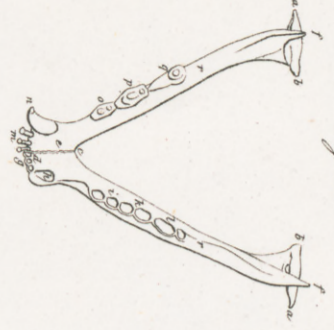
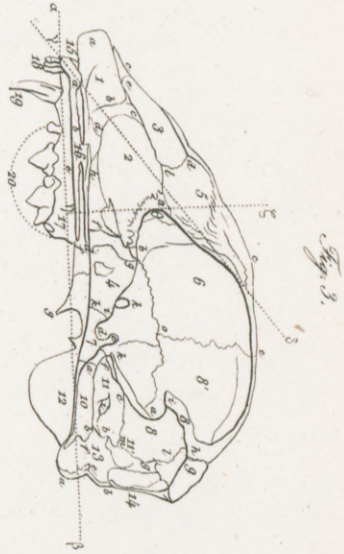
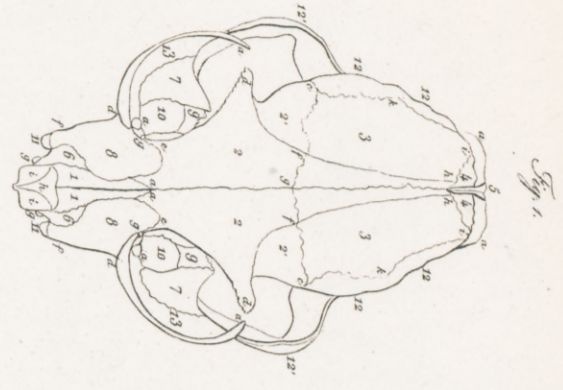




*Recht von N. de Dupuytren.*



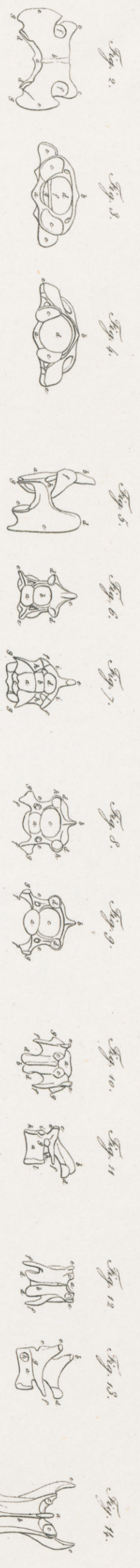
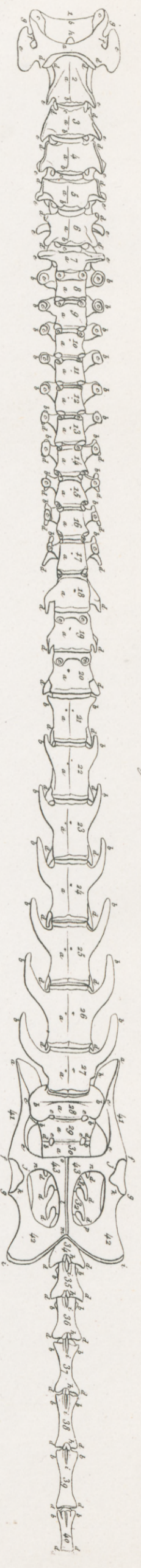




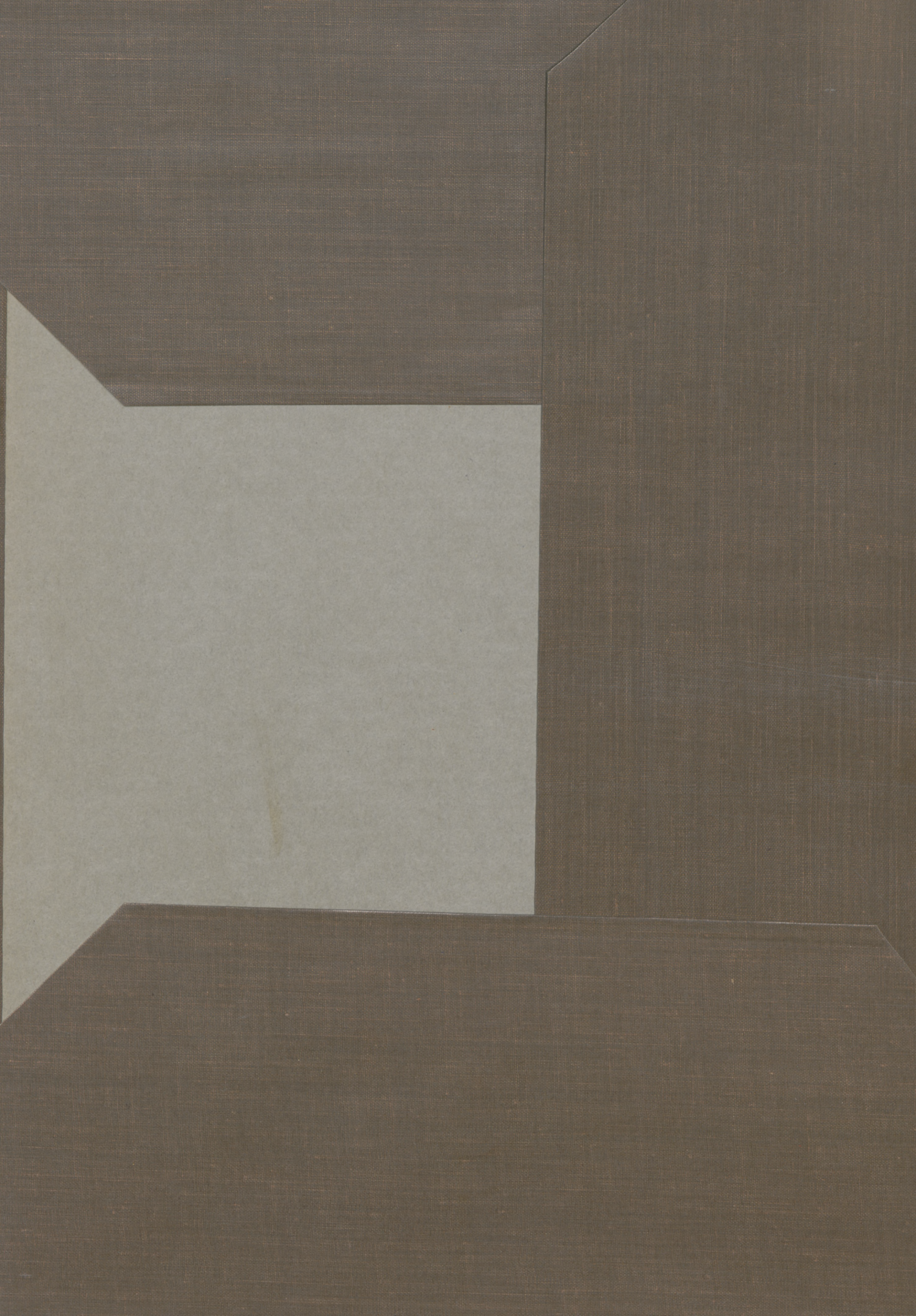
Exhib. par. M. de. Duponchel.

AN INSTITUTE OF THE UNIVERSITY OF CHICAGO











NATIONAL LIBRARY OF MEDICINE

NLM 00107583 8

ARMY  
MEDICAL LIBRARY