

U H
440
U586d
1944

U. S. MEDICAL FIELD SERVICE SCHOOL
CARLISLE BARRACKS, PENNSYLVANIA

DEDICATION OF THE MEDICAL DEPT.
EQUIPMENT LABORATORY MUSEUM OF FIELD
EQUIPMENT

UH 440 U586d 1944

14221110R



NLM 05100425 0

NATIONAL LIBRARY OF MEDICINE



The Dedication
OF THE
Medical Department Equipment Laboratory
Museum of Field Equipment



AT

U.S. Medical Field Service School,

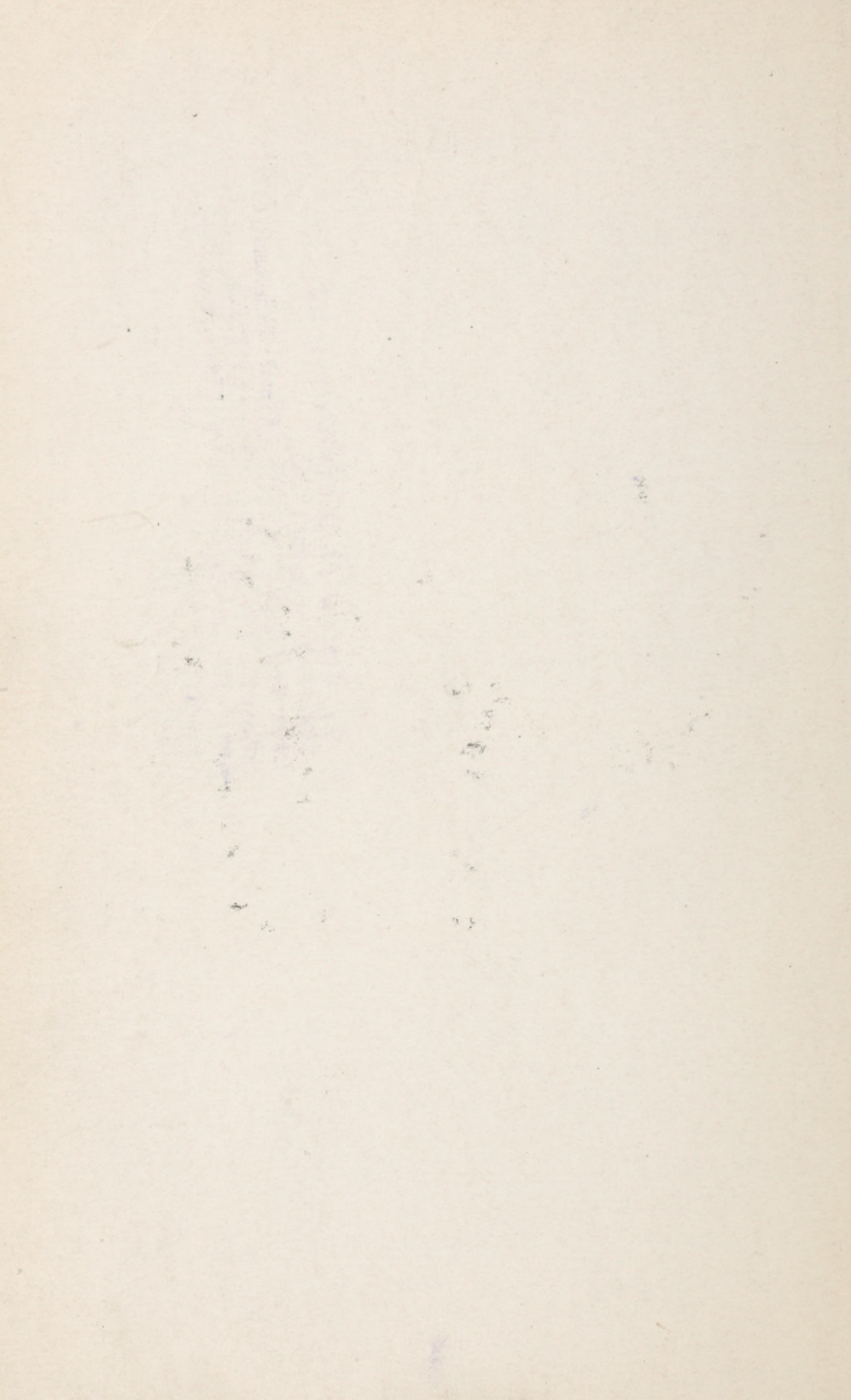
Carlisle Barracks

Pennsylvania

May 17, 1944



2:00 P. M.



ORDER OF EXERCISES

STARK FIELD

2:00 P. M.

Medical Field Service School Band.....Selection

ChaplainInvocation

Colonel Earle D. Quinnel, Director, Medical

Department Equipment Laboratory ...Introductory Remarks

Brig. General Addison D. Davis, Commandant,

Medical Field Service SchoolRemarks

Major General George F. Lull

Deputy Surgeon General.....Remarks

Medical Field Service School BandSelection

Escorted Visit

to

Laboratory and Museum

Parade4:30 P. M.

Refreshments—Officers' Club5:30 P. M.

Bk 17 Mar 32

LH
440
4586d
1944
c.1

HISTORY

The Medical Department Equipment Laboratory was established in 1920 by The Surgeon General of the U. S. Army, at the time of the activation of the Medical Field Service School. For a time its status was not definitely determined and was operated under the direction of the Department of Equipment and Transportation as a school activity. The impracticability of such a plan was soon realized and The Surgeon General on 10 November 1921 ordered the Equipment Laboratory to be operated as a separate Department of Carlisle Barracks which has been its status ever since.

The Equipment Laboratory since its existence has been housed in a building previously converted by the Indian School as a wood and iron working shop from one of the old Post stables. Since its establishment the Medical Department Equipment Laboratory has been engaged in the research, development and testing of equipment for use by the Medical Department in the field.

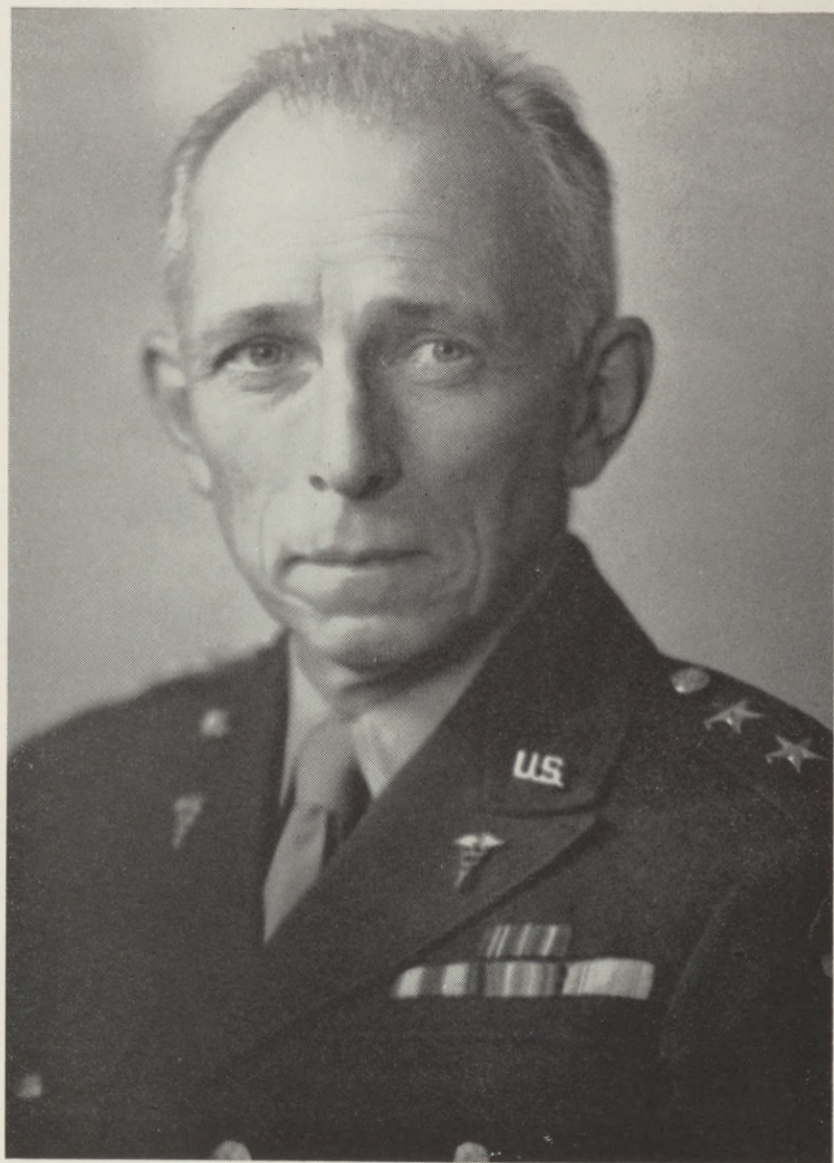
Its growth during prewar years, though slow, kept pace with the ever increasing scope of its activities. Since the outbreak of the present global war with its many Medical Equipment problems, the activities of the Laboratory have increased rapidly. To meet these, personnel, machinery and other facilities have been added so that the present Laboratory presents a well equipped and very active establishment.

Outstanding in its developmental work of many hundreds of items of equipment have been individual first aid packets and first aid equipment, medical pack equipment, cross-country ambulance, disinfector, mobile dental, medical and optical laboratories and mobile dental and surgical operating units.

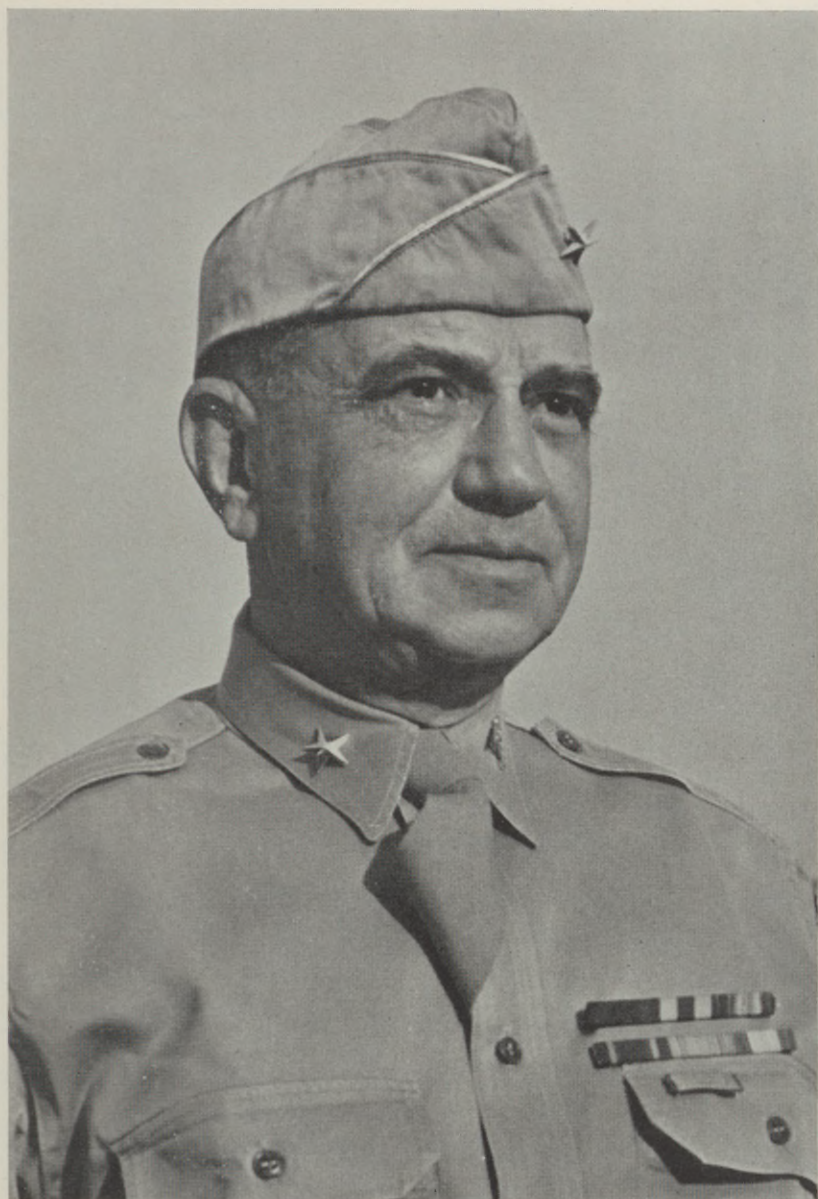
The newly created field equipment museum section of the Laboratory has been established for display of present items of equipment for instructional purposes and as a depository for many valuable Historical Models and old items of equipment.



LT. COLONEL JOHN P. FLETCHER
THE FIRST DIRECTOR
OF THE
MEDICAL DEPARTMENT EQUIPMENT LABORATORY



MAJOR GENERAL NORMAN T. KIRK
THE SURGEON GENERAL OF THE U. S. ARMY



BRIG. GENERAL ADDISON D. DAVIS
COMMANDANT OF THE MEDICAL FIELD SERVICE SCHOOL
AND
COMMANDING GENERAL, CARLISLE BARRACKS, PENNSYLVANIA



COLONEL EARLE D. QUINNELL
PRESENT DIRECTOR
OF THE
MEDICAL DEPARTMENT EQUIPMENT LABORATORY

MUSEUM OF FIELD EQUIPMENT



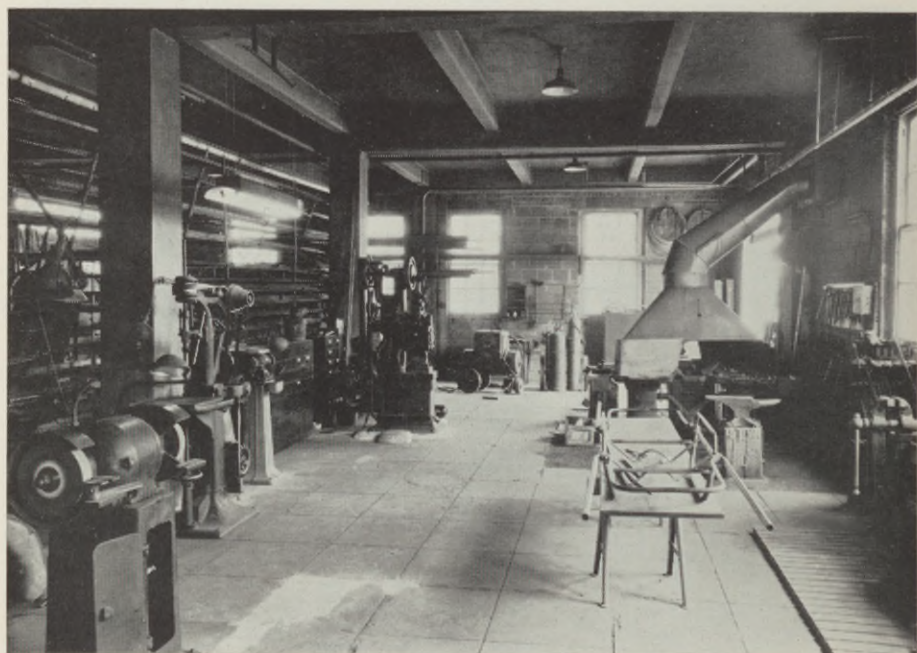
STANDARD SAMPLES ROOM



EXPERIMENTAL EQUIPMENT AND MODEL ROOM



CARPENTER SHOP



BLACKSMITH AND WELDING SHOPS



DRAFTING ROOM



MACHINE AND SHEET METAL SHOPS

ROSTER—MILITARY AND CIVILIAN PERSONNEL
MEDICAL DEPARTMENT EQUIPMENT LABORATORY

Colonel Earle D. Quinnell, M.C.
Lt. Colonel Alonzo B. Christie, Jr., M.C.
Major William R. Cattell, Sn.C.
Captain Oney C. Raines, M.C.
Captain Richard H. Hronik, Sn.C.
Captain Glen T. Kellogg, Sn.C.
M. Sgt. John D. Demuth
T. Sgt. Wright R. Finley
S. Sgt. LeRoy R. Beckwith
T/4th Gr. Robert H. Ramp
T/4th Gr. Antonio Ribecco
Cpl. Raymond J. Tilton
T/5th Gr. Donald A. Ludwig
Pfc. Leonard V. Burt

William N. Alexander
George L. Doyle
Chester L. Eppley
Florence M. Florik
Ethel B. Hart
Thomas N. Niblett
Ralph S. Paden
Kenneth H. Reffner
William C. Shambaugh
Jasper D. Shupe
George R. Snyder
Harvey Steigelman

DIRECTORS
OF THE
MEDICAL DEPARTMENT EQUIPMENT LABORATORY

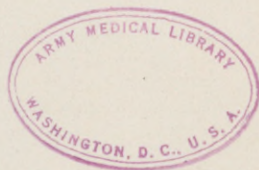
Lt. Col. John P. Fletcher, M.C. (1920 - 1930)

Colonel Larry B. McAfee, M.C. (1930 - 1933)

Colonel Garfield L. McKinney, M.C. (1933 - 1939)

Colonel Albert S. Dabney, M.C. (1939 - 1942)

Colonel Earle D. Quinnell, M.C. (1942 -)





PRESSBOARD
PAMPHLET BINDER

Manufactured by
GAYLORD BROS. Inc.
Syracuse, N. Y.
Stockton, Calif.

UH 440 U586d 1944

14221110R



NLM 05100425 0

NATIONAL LIBRARY OF MEDICINE