

STANDARD SUPPLY TABLE

Medical Department,

U. S. Army.

14-7-2

SURGEON GENERAL'S OFFICE

LIBRARY

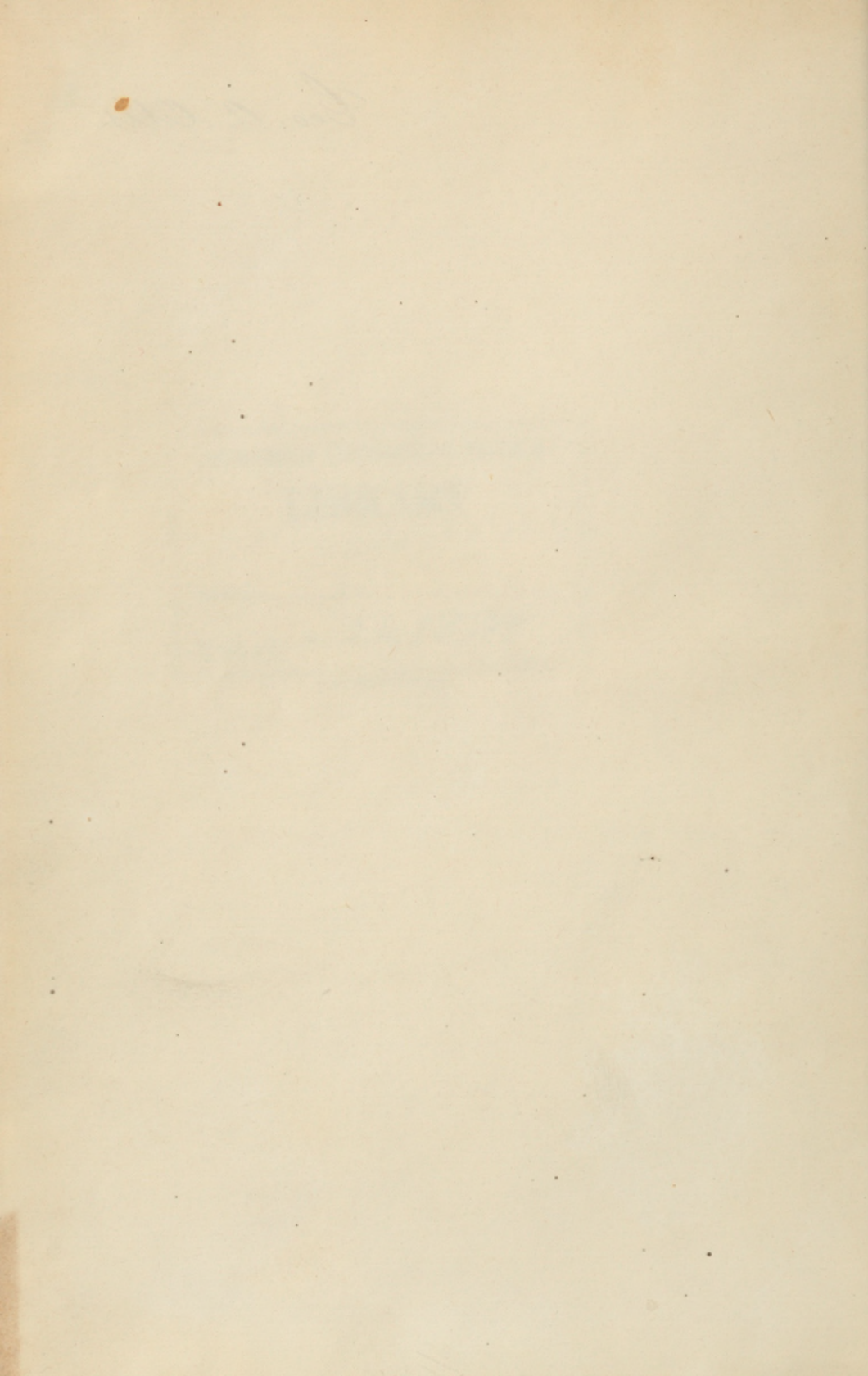
*col. Jones' off,
502 -*

Section

Form 113c. No. 261838
W.D., S.G.O.

GOVERNMENT PRINTING OFFICE

Geo. A. Otis.



Circular No. 1.

WAR DEPARTMENT,
SURGEON GENERAL'S OFFICE,

WASHINGTON, D. C., *July 1, 1871.*

The following is the Standard Supply Table of the Medical Department of the United States Army, and its provisions and requirements will be in force from this date.

J. K. BARNES,
Surgeon General, U. S. Army.

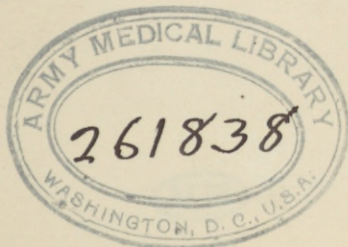
STANDARD SUPPLY TABLE

OF THE

MEDICAL DEPARTMENT

OF THE

UNITED STATES ARMY.



Faint, illegible text at the top of the page, possibly bleed-through from the reverse side.

Faint, illegible text in the middle section of the page.

Faint, illegible text in the lower middle section of the page.

Faint, illegible text near the bottom of the page.





The first section of the document discusses the importance of maintaining accurate records of all transactions and activities. It emphasizes the need for transparency and accountability in the management of the organization's resources.

The second section outlines the various roles and responsibilities of the staff members. It details the reporting structure and the specific tasks assigned to each position. This section also addresses the process of recruitment and the criteria used for selecting new employees.

The third section provides a detailed overview of the organization's financial performance. It includes a breakdown of income, expenses, and the resulting profit or loss for the reporting period. This section also discusses the budgeting process and the measures taken to control costs.

The fourth section discusses the organization's compliance with relevant laws and regulations. It highlights the steps taken to ensure that all operations are conducted in a lawful and ethical manner.

The fifth section describes the organization's commitment to social responsibility and community engagement. It outlines the various initiatives and programs implemented to support the local community and promote sustainable development.

The sixth section provides a summary of the organization's overall performance and achievements. It highlights the key successes and areas for improvement. This section also includes a forward-looking statement regarding the organization's strategic vision and future goals.

The final section of the document is a concluding statement that reiterates the organization's commitment to excellence and its dedication to serving its stakeholders. It expresses confidence in the future and thanks the staff and community for their support and contributions.

1. Requisitions for Medical Supplies will in future be made semi-annually, and for a six months' supply, unless otherwise directed by a Medical Director or the Surgeon General. But at remote posts, to which it is difficult to procure transportation, except at certain seasons, such as the posts on the head-waters of the Missouri, in Alaska, the Department of the Columbia, Arizona, New Mexico and Texas, requisitions will be made for one year's supply.

2. To permit Medical Officers to indulge in individual preferences, a secondary list of drugs and medicines has been prepared, the articles upon which are to be obtained by special requisition only. Such special requisitions should be forwarded to the Medical Director, in triplicate, at the same time as the regular annual or semi-annual requisition for supplies, and the Medical Director will forward one copy of such special requisition to the Surgeon General, with such alterations as he may have made in it indicated thereon, together with a statement of the date of his approval and the depot to which he has forwarded the original for issue. It is not supposed that any medical officer will require for all, nor (except at the larger posts) for even the majority of the articles contained on this secondary list, and Medical Directors will scrutinize closely such requisitions, and make such alterations as they deem proper.

3. While it is believed that the quantities allowed will be ample, and usually in excess of the requirements of the posts, it is not supposed that they will always meet the necessities caused by the prevalence of epidemics, or the location of troops in unhealthy parts of the country, and medical officers who allow their supplies to become exhausted in such contingencies, without giving timely notice of the deficiency, will be held accountable for any bad results arising therefrom.

4. Medical Purveyors will not issue any articles not on this Supply Table, except by special authority of the Surgeon General.

5. Sets of personal instruments, meteorological instruments, test chests and microscopes will be issued only from the Surgeon General's Office.

6. Requisitions for regular medical supplies are to be made in detail, in duplicate, and are to be transmitted by different mails. They are to be made for those articles only that are, or are likely to be, deficient, and they must exhibit the quantity of every article on hand. In preparing the regular semi-annual requisition medical officers shall conform to the Standard Supply Table as to articles, and if quantities in excess of the authorized allowance be asked for, satisfactory reasons therefor must be assigned, or they will not be issued.

7. Acting Assistant Medical Purveyors at field depots and the senior medical officer of every hospital, regiment, post, or detached command shall forward their requisitions for medical supplies to the Medical Director under whom they may be serving. The Medical Director will approve or modify the requisition at his discretion and, in ordinary cases, transmit them to the nearest Purveyor for issue. If, in the opinion of the Medical Purveyor the articles asked for are extravagant in quantity, he shall, when the circum-

stances of the case permit, forward the requisition to the Surgeon General for instructions. When the quantity required is large and the interests of the service permit, the Medical Director shall transmit the requisitions, with his recommendations indorsed thereon, to the Surgeon General.

8. Special requisitions shall consist of a list of the articles and of the respective quantities required and of the quantity of each article required remaining on hand, with a certificate, properly dated and signed, that they are necessary for the public service, and stating why such requisition is necessary.

9. Disinfectants are furnished by the Medical Department, for use in Post Hospitals, and with the *sick*, only. Quicklime, chlorinated lime, and disinfectants for the use of posts, must be obtained from the Quartermaster's Department.

10. Applications for microscopes by medical officers will be favorably considered, provided the evidence be satisfactory that the officer will use the instrument for the benefit of science, and will report the results of his observations to the Surgeon General.

11. The transfer of surgical instruments issued to medical officers *for their personal use* is positively forbidden, unless authorized by the Surgeon General. Each medical officer shall retain those instruments in his *immediate* possession so long as he remains in the Army, and will be held responsible for their complete and serviceable condition, and *for their easy accessibility at all times*. If the instruments be lost, destroyed or damaged, they must be replaced or repaired as soon as possible by means of a requisition upon the Surgeon General, setting forth fully the causes of such losses or damage. If the loss or damage result from the unavoidable casualties of the service, the expense of replacing or repairing the instruments will be paid by the Medical Department; if from any other causes, such expenses must be paid by the medical officer.

12. Surgical Instruments, medicine cases, panniers, and mess chests that need and are worth repairing, will be reported to the Medical Director with a view to their being sent, when circumstances permit, to the nearest Medical Purveyor, and are not to be submitted to inspection with a view to condemnation, unless the probable expense of transportation and repair will exceed the value of the articles.

13. When it is necessary to obtain medical supplies, in an emergency which will not admit of application to a Medical Purveyor, they may be purchased and paid for by the medical officer and Bills in duplicate for his reimbursement (Form 1,) be forwarded through the Medical Director to the Surgeon General for examination and payment. The purchasing officer shall prepare, in triplicate, an Invoice of the articles bought (Form 2,); one copy to be forwarded to the Surgeon General with the Bills; one, as a voucher, to accompany his next Property Return, on which he shall account for the articles purchased; and one to be filed with his retained set of vouchers. *Medical officers will exercise great care to avoid, by proper requisitions, the necessity for making direct purchases.*

14. Medical officers shall take up and account for all medical supplies of the Army that come into their possession, and report, when possible, to whose account they are to be credited.

15. In all official lists of medical supplies, the nomenclature, order, and classification of the Standard Supply Table shall be strictly followed. The whole table need not be transcribed in all instances, but the names of the articles mentioned must follow the official arrangement.

16. All officers in transferring medical supplies shall prepare Invoices in triplicate, (Form 3,) two of which are to be given to the receiving officer and one sent immediately to the Surgeon General. The receiving officer shall prepare Receipts in triplicate, (Form 4,) two of which are to be given to the issuing officer, with a report of the quality and condition of the articles, and one sent immediately to the Surgeon General accompanied by a copy of the report. A packer's list (Form 5,) will be furnished by the issuing officer whenever requested by the officer making requisition. The contents of Medicine Wagons must be invoiced in detail. When supplies are turned over to a Quartermaster for storage or transportation, a duplicate of the Quartermaster's receipt for the packages will be forwarded to the Surgeon General with the invoice.

17. When medical supplies are sold at Public Auction the officer responsible for the property shall prepare an Account of Sales, in duplicate (Form 6). He shall also prepare an Invoice, in triplicate, of the articles sold. The original of this Account of Sales, accompanied by the original of the Invoice, will be forwarded as a voucher to his money accounts; the duplicate of the Account of Sales will be filed with his retained set of vouchers. The duplicate of the Invoice is to be sent to the Surgeon General as a voucher, with his next Property Return—on which the articles sold shall be accounted for—and the triplicate filed with his retained set of vouchers.

18. Medical officers receiving money from the sale of public property shall deposit the same without delay in the nearest Government Depository, to the credit of the Treasurer of the United States, or with a medical disbursing officer, taking duplicate Certificates of Deposit or Receipts therefor, the original of which shall be forwarded directly to the Surgeon General. This will serve as a voucher to the Abstract of Disbursements upon which such transfer appears. The duplicate of the Certificate of Deposit or Receipt should be retained by the officer.

19. Assistant Medical Purveyors and Medical Storekeepers shall prepare at the end of each fiscal quarter, a Return, in triplicate, of medical supplies on hand at last returns, received, expended, issued, sold and remaining on hand. They shall also prepare a Quarterly Abstract of Receipts and Issues, in triplicate, which shall state the names of the persons from whom supplies have been received; the names of those to whom they have been issued; the quantities transferred in every instance, and the dates of the transactions. The original of this Abstract, accompanied by a complete set of vouchers (Pars. 17 and 18,) and the original Return, shall be transmitted to the Surgeon General at the end of the Quarter, and the duplicate of the Abstract, without vouchers, and of the Return, by the next mail: the triplicate of the Abstract, with a complete set of vouchers, and of the Return, are to be retained.

20. All other medical officers in charge of medical supplies shall prepare annually, on the 31st of December, in triplicate, Returns of medical supplies on hand at last returns, received, expended, issued, sold and remaining on hand, (including personal instruments) and all officers shall render similar accounts when relieved from the duty to which their returns relate. In consequence of the arrangement adopted in the Annual Property Return no separate Abstract of Receipts and Issues will, ordinarily, be required. The original of this Return, accompanied by a complete set of vouchers, which will consist of Invoices of all property received and Receipts for all property issued, shall be promptly transmitted to the Surgeon General, as shall also the duplicate, without vouchers, by the

next mail. The triplicate, with a complete set of vouchers, shall be retained for the protection of the officer responsible for the property. In exceptional cases a certified Invoice may be offered by the issuing officer, in the absence of a Receipt, as a substitute for the proper voucher, together with such additional evidence as he may possess in regard to the transfer.

21. Damaged and unserviceable Medical and Hospital Property must be submitted to inspection, lists being made out on forms similar to those used for the condemnation of other military property. It is expected that a Medical Director will, at least once a year, visit each post in his department, and he will then inspect all unserviceable property submitted to his action.

22. Articles lost or destroyed by unavoidable accident must be accounted for by a Certificate from the medical officer setting forth fully the circumstances under which such loss or destruction occurred—and this should be accompanied by statements of non-interested parties as evidence in the case. Such Certificates and Statements must be forwarded through the Medical Director for remark.

MEDICINES.

I. Regular Supply; to be drawn semi-annually or annually for all posts.

ARTICLES.	ALLOWANCE FOR SIX MONTHS.					ALLOWANCE FOR THREE MONTHS.	
	Post of 1 Co.	Post of 2 Cos.	Post of 4 Cos.	Post of 6 Cos.	Post of 1 Regt.	General Hospital of 250 beds.	500 Men in the Field.
MEDICINES.							
Acid, Acetic, in 4 oz. g. s. bottles	8	12	16	20	24	24
“ Carbolic, for disinfection, in 1 lb. bottles, 95 per cent.....lb.	2	3	6	8	10	25
“ “ pure, crystallized, in 4 oz. g. s. bottles	4	4	8	12	16	48	4
“ Citric, in 8 oz. bottles	16	16	16	32	32	96	8
“ Muriatic, in 8 oz. g. s. bottles	8	8	8	16	16	16
“ Nitric, in 4 oz. g. s. bottles	4	8	8	16	16	16
“ Sulphuric, in 4 oz. g. s. bottles.....	4	8	8	16	16	16
“ “ Aromatic, in 8 oz. g. s. bottles.....	8	16	16	16	16	96	8
“ Tannic, in 1 oz. bottles	1	2	4	6	8	12	1
“ Tartaric, powdered, in 8 oz. bottles.....	16	24	32	48	64	96
Alcohol, in 32 oz. bottles.....	12	12	24	36	48	96	2
Aloes, powdered, in 2 oz. bottles	2	2	2	4	4	8
Alumina and Potassa, Sulphate of, (Alum) in 4 oz. bottles.....	8	16	16	16	24	48
Ammonia, Aromatic Spirits of, in 4 oz. g. s. bottles	8	16	24	32	32	48	4
“ Carbonate of, in 8 oz. bottles	16	24	32	48	64	64	8
“ Muriate of, in 8 oz. bottles	8	8	16	24	32	64
“ Solution of, in 8 oz. g. s. bottles.....	24	48	64	96	96	192	16
Antimony and Potassa, Tartrate of, (Tartar Emetic) in 1 oz. bot.oz.	1	1	1	2	2	4	1
Arsenic, Pills of, (1-20th of a gr. each) in g. s. bottles.....no.	100	100	100	200	200	800	200
Arsenite of Potassa, Solution of, (Fowler's Solution) in 4 oz. bot.oz.	4	4	8	8	12	24	4
Belladonna, Alcoholic Extract of, in 1 oz. w. m. bottles.oz.	1	1	1	2	2	4	1
Bismuth, Subnitrate of, in 2 oz. bottles.....	8	8	16	16	32	96	8
Borax, powdered, in 8 oz. bottles	8	8	16	16	24	48
Camphor, in 8 oz. bottles	16	16	32	48	64	96	8
Castor Oil, in 32 oz. bottles	4	6	8	12	16	16	2
Cerate, Blistering, in 8 oz. tins.....	8	16	32	40	48	64	4
“ Resin, in 1 lb. tins	1	1	2	3	4	6	1
“ Simple, in 1 lb. tins	4	4	8	12	16	32	2
Chalk, Prepared, in 8 oz. bottles.....	8	16	32	48	64	96
Chloral, Hydrate of, in 1 oz. g. s. bottles.....	8	12	16	24	32	64	8
Chloroform, purified, in 8 oz. g. s. bottles.....	24	32	64	96	96	224	64
Cinchona, Fluid Extract of, (with aromatics) in 8 oz. bottles.....oz.	32	48	64	96	96	128
Cinnamon, Oil of, in 1 oz. g. s. bottles.....	1	1	1	2	2	3
Cod Liver Oil, in 1 pint bottles.....	12	16	24	32	40	48
Colchicum Seed, Fluid Extract of, in 4 oz. bottles.....	4	4	8	8	12	16	4
Colocynth, Compound Extract of, powdered, in 8 oz. bottles oz.	8	8	16	24	32	64	8
Copper, Sulphate of, in 2 oz. bottles	2	2	4	4	4	4	2
Croton Oil, in 1 oz. g. s. bottles	1	1	1	2	2	2	1
Digitalis, Tincture of, in 2 oz. bottles.....	2	2	4	6	6	12
Ergot, Fluid Extract of, in 4 oz. g. s. bottles.....	4	4	8	8	12	16	4
Ether, Compound Spirits of, (Hoffman's Anodyne) in 8 oz. g. s. bot.oz.	8	16	32	48	64	96	8
“ Stronger, for Anaesthesia, in 1 lb. tins	32	48	64	96	128	256	32
“ Spirit of Nitrous, (Sweet Spirits of Nitre) in 8 oz. g. s. bot.oz.	24	32	64	64	96	96	8

ARTICLES.	ALLOWANCE FOR SIX MONTHS.					ALLOWANCE FOR THREE MONTHS.	
	Post of 1 Co.	Post of 2 Cos.	Post of 4 Cos.	Post of 6 Cos.	Post of 1 Regt.	General Hospital of 250 beds.	500 Men in the Field.
MEDICINES—Continued.							
Flax-seed, in tins	4	4	8	12	16	16
“ Meal, in tins	8	12	16	24	32	64
Ginger, Fluid Extract of, in 8 oz. bottles.....	8	16	16	24	32	32	8
Glycerin, pure, in 8 oz. bottles	32	32	48	64	96	96	8
Gum Arabic, powdered, in 8 oz. bottles	8	16	24	32	40	96	8
Hyoscyanus, Alcoholic Extract of, in 1 oz. w. m. bottles	1	1	2	2	3	8
Iodine, in 1 oz. g. s. bottles	2	3	4	6	7	8	1
Ipecacuanha, powdered, in 8 oz. bottles	8	8	16	24	32	32
Iron, Solution of the Subsulphate of, in 1 oz. bottles.....	2	2	2	3	4	6	2
“ Sulphate of, Commercial, in 20 lb. wood boxes	20	40	60	80	100	120
“ Tincture of the Chloride of, in 8 oz. g. s. bottles	16	16	32	64	96	96	16
“ and Quinia, Citrate of, in 1 oz. bottles.....	2	4	6	8	12	12
Jalap, powdered, in 4 oz. bottles	4	4	8	8	8	8
Lavender, Compound Spirits of, in 8 oz. bottles	16	24	32	48	64	64
Lead, Acetate of, in 8 oz. bottles	8	8	16	24	32	48	8
Liquorice, Extract of, in paper.....	24	32	64	96	96	192	32
“ root, powdered, in 8 oz. bottles	8	8	8	16	24	64	8
Magnesia, heavy calcined, in 4 lb. bottles.....	4	8	16	20	24	24
“ Sulphate of, in 8 lb. tins.....	8	16	24	32	48	64	8
Mercurial Ointment, in 1 lb. pots	1	1	2	3	4	6	1
Mercury, Corrosive Chloride of, (Corrosive Sublimate) in 1 oz. bot. oz.	1	1	2	3	4	4	1
“ with chalk, in 2 oz. bottles.....	2	2	4	6	8	6
“ Mild Chloride of, (Calomel) in 2 oz. bottles	2	2	4	4	6	6	2
“ Ointment of the Nitrate of, (Citrine Ointment) in 4 oz. pots	4	4	8	12	16	16
“ Pill of, (Blue Mass) in 8 oz. pots.....	8	8	16	24	32	32	8
“ Red Oxide of, in 1 oz. bottles	1	1	2	3	4	4
Morphia, Sulphate of, in ¼ oz. bottles.....	½	½	1	1½	2	2	½
Mustard Seed, black, ground, in 6 lb. tins	6	6	12	18	24	36	6
Nux Vomica, Alcoholic Extract of, powdered, in 1 oz. bottles.....	1	1	1	1	1	4
Olive Oil, in 1 pint bottles.....	6	8	12	16	20	24
Opium, Camphorated Tincture of, in 8 oz. bottles	16	24	48	64	96	96	24
“ Compound Powder of, (Dover's Powder) in 8 oz. bottles.....	8	16	32	48	64	64	8
“ Deodorized Tincture of, in 4 oz. bottles.....	4	4	8	12	16	24
“ powdered, in 8 oz. bottles.....	8	8	16	24	32	32	8
“ Tincture of, (Laudanum) in 8 oz. bottles.....	16	24	32	48	64	96	16
Pepper, Cayenne, ground, in 8 oz. bottles	4	4	8	12	16	32	8
Peppermint, Spirit of, in 4 oz. bottles.....	8	16	24	32	32	32	8
Pills, Camphor, (grains two) and Opium (grain one) in bottles.....	200
“ Compound Cathartic, in bottles.....	100	200	300	400	500	600	100
“ Opium, in bottles.....	200
Podophyllum, Resin of, in 1 oz. bottles.....	1	1	2	2	3	4	1
Potassa, Caustic, in 1 oz. g. s. bottles.....	1	1	1	1	1	1
“ Acetate of, in 8 oz. bottles.....	16	16	16	24	24	48
“ Bicarbonate of, in 8 oz. bottles.....	16	16	24	32	32	32	8
“ Bitartrate of, powdered, (Cream of Tartar) in 8 oz. bot. oz.	16	16	32	32	48	64	16
“ Chlorate of, powdered, in 8 oz. bottles.....	16	16	24	32	48	96	8
“ Nitrate of, powdered, in 8 oz. bottles.....	8	8	16	16	24	48
“ Permanganate of, in 1 oz. bottles.....	2	2	4	6	8	10	2
Potassium, Bromide of, in 4 oz. bottles.....	8	8	16	32	40	64	8

ARTICLES.	ALLOWANCE FOR SIX MONTHS.					ALLOWANCE FOR THREE MONTHS.	
	Post of 1 Co.	Post of 2 Cos.	Post of 4 Cos.	Post of 6 Cos.	Post of 1 Regt.	General Hospital of 250 beds,	500 Men in the Field.
<i>MEDICINES—Continued.</i>							
Potassium, Iodide of, in 8 oz. bottles.....oz.	16	24	48	96	112	112	8
Quinia, Sulphate of, in 1 oz. bottles, or compressed in tins.....oz.	10	15	25	30	40	60	10
Rhubarb, powdered, in 4 oz. bottles.....oz.	4	4	8	12	16	24
Rochelle Salt, powdered, in 8 oz. bottles.....oz.	32	48	64	80	96	96	16
Santonin, in 1 oz. bottles.....oz.	1	1	1	1	2	2
Seneka, Fluid Extract of, in 8 oz. bottles.....oz.	8	16	24	32	48	64	8
Silver, Nitrate of, in crystals, in 1 oz. g. s. bottles.....oz.	1	1	1	2	2	4	1
“ “ Fused, in 1 oz. g. s. bottles.....oz.	1	1	2	2	3	4	1
Soap, Castile, in paper.....lb.	4	6	8	12	16	24	8
“ Common, in bars.....lb.	10	15	20	25	25
Soda, Bicarbonate of, in 8 oz. bottles.....oz.	24	32	48	64	64	96	16
“ Chlorinated Solution of, in 1 lb. g. s. bottles.....lb.	4	6	8	12	16	20	1
Squill, powdered, in 1 oz. bottles.....oz.	1	2	3	4	5	6
“ Syrup of, in 1 lb. bottles.....lb.	4	8	12	16	24	20	4
Strychnia, in $\frac{1}{8}$ oz. bottles.....oz.	$\frac{1}{8}$	$\frac{1}{8}$	$\frac{1}{8}$	$\frac{1}{8}$	$\frac{1}{8}$	$\frac{1}{8}$
Sulphur, washed, in 8 oz. bottles.....oz.	16	16	32	32	48	64	16
Turpentine, Oil of, in 32 oz. bottles.....bott.	2	4	6	8	10	12	1
Vaccine Virus, quantities as required, (see note).....
Wax, White, in paper.....oz.	4	4	8	12	16	32	1
Zinc, Acetate of, in 2 oz. bottles.....oz.	2	2	2	4	4	6
“ Oxide of, in 1 oz. bottles.....oz.	2	2	2	2	2	4
“ Solution of Chloride of, in 1 lb. g. s. bottles.....lb.	2	4	6	8	10	12
“ Sulphate of, in 1 oz. bottles.....oz.	2	2	3	4	5	6	1

NOTE.

1. Vaccine Virus is to be procured by application to Medical Directors of Departments. Medical Directors will obtain it by requisition upon the Surgeon General.

II. Supplementary List of Medicines.

To be obtained on Special Requisition only.

ARTICLES.	ALLOWANCE FOR SIX MONTHS.					ALLOWANCE FOR THREE MONTHS.	
	Post of 1 Co.	Post of 2 Cos.	Post of 4 Cos.	Post of 6 Cos.	Post of 1 Regt.	General Hospital of 250 beds.	500 Men in the Field.
MEDICINES.							
Acid, Arsenious, in $\frac{1}{2}$ oz. g. s. bottles.....oz.	$\frac{1}{2}$	$\frac{1}{2}$	$\frac{1}{2}$	1	1	1
“ Benzoic, in 1 oz. g. s. bottles.....oz.	1	1	1	2	2	2
“ Chromic, in 1 oz. g. s. bottles.....oz.	1	1	1	1	1	1
“ Gallic, in 1 oz. bottles.....oz.	1	1	1	1	1	1
“ Phosphoric, Diluted, in 4 oz. g. s. bottles.....oz.	4	4	4	4	4
“ Hydrocyanic, Diluted, in 1 oz. g. s. bottles.....oz.	1	1	1	1	1	1
Aconite root, Fluid Extract of, in 8 oz. bottles.....oz.	8	8	16	24	24	32	8
“ Tincture of, in 2 oz. bottles.....oz.	2	2	2	2	2	2
Ammonia, Phosphate of, in 2 oz. g. s. bottles.....oz.	2	2	2	2	2	2
Anise, Oil of, in 1 oz. g. s. bottles.....oz.	1	1	2	2	3	4
Arnica, Fluid Extract of, in 4 oz. bottles.....oz.	4	4	8	8	16	24
Arsenic and Mercury, Solution of the Iodide of, in 1 oz. g. s. bot.oz.	1	1	1	1	1	1
Assafetida, in 4 oz. bottles.....oz.	4	4	4	4	4	8
Atropia, Sulphate of, in $\frac{1}{8}$ oz. g. s. bottles.....oz.	$\frac{1}{8}$	$\frac{1}{8}$	$\frac{1}{8}$	$\frac{1}{8}$	$\frac{1}{8}$	$\frac{1}{8}$
Bismuth, Subcarbonate of, in 4 oz. bottles.....oz.	4	4	4	8	8	16
“ Tannate of, in 1 oz. bottles.....oz.	1	1	1	2	2	4
Blistering liquid, in 4 oz. g. s. bottles.....oz.	4	4	4	8	8	8	4
Bromine, in 1 oz. g. s. bottles.....oz.	1	1	1	1	1	1
Buchu, Fluid Extract of, in 8 oz. g. s. bottles.....oz.	16	16	32	48	64	64
Cacao, Butter of, in 4 oz. tins.....oz.	4	4	8	12	16	20
Calabar Bean, Extract of, in $\frac{1}{8}$ oz. bottles.....oz.	$\frac{1}{8}$	$\frac{1}{8}$	$\frac{1}{8}$	$\frac{1}{8}$	$\frac{1}{8}$	$\frac{1}{8}$	$\frac{1}{8}$
Cantharides, Tincture of, in 1 oz. bottles.....oz.	1	1	1	1	1	1
“ Cerate of the Extract of, in 4 oz. pots.....oz.	4	4	4	4	4	8
Catechu, in 4 oz. bottles.....oz.	4	4	8	8	8	16
Chamomile Flowers, in paper.....lb.	1	1	1	1	1	1
Cinchona Bark, powdered, in 8 oz. bottles.....oz.	8	8	16	24	32	64
Cloves, Oil of, in 1 oz. bottles.....oz.	1	1	1	1	1	1
Collodion, in 1 oz. g. s. bottles.....oz.	1	2	4	4	4	4	1
Copaiba, in 1 lb. bottles.....oz.	32	32	64	96	128	128
Creasote, in 1 oz. g. s. bottles.....oz.	1	1	1	1	1	1
Cubeb, Oleo-resin of, in 8 oz. bottles.....oz.	8	8	8	16	16	32
Gentian, Fluid Extract of, in 8 oz. bottles.....oz.	16	24	32	48	48	64
Gum Arabic, in 4 oz. bottles.....oz.	4	4	8	12	16	96
Guaiac, Resin of, in 8 oz. bottles.....oz.	8	8	16	24	24	64
Indian Hemp, Purified Extract of, in 1 oz. pots.....oz.	1	1	2	2	3	3
Ipecacuanha, Fluid Extract of, in 8 oz. bottles.....oz.	8	8	8	16	24	32	8
Iron, Dried Sulphate of, in 4 oz. bottles.....oz.	4	4	4	8	8	16
“ by Hydrogen, in 1 oz. bottles.....oz.	1	1	1	2	2	3
“ Hypophosphite of, in 2 oz. bottles.....oz.	2	2	2	4	4	6
“ Syrup of the Iodide of, in 8 oz. g. s. bottles.....oz.	8	8	16	24	32	32
“ Oxalate of, in 2 oz. bottles.....oz.	2	2	2	4	4	6
“ and Potassa, Tartrate of, in 1 oz. bottles.....oz.	2	2	2	4	4	6
“ Pyrophosphate of, in 4 oz. bottles.....oz.	4	4	8	12	16	24

ARTICLES.	ALLOWANCE FOR SIX MONTHS.					ALLOWANCE FOR THREE MONTHS.	
	Post of 1 Co.	Post of 2 Cos.	Post of 4 Cos.	Post of 6 Cos.	Post of 1 Regt.	General Hospital of 250 beds.	500 Men in the Field.
<i>MEDICINES—Continued.</i>							
Mercury, Green Iodide of, in 1 oz. g. s. bottles.....oz.	1	1	2	3	4	4
“ Yellow Subsulphate of, (Turpeth Mineral) in 1 oz. bot.oz.	1	1	1	1	1	1
Morphia, Acetate of, in ¼ oz. bottles.....oz.	¼	¼	½	½	½	½
Myrrh, in 4 oz. bottles.....oz.	4	4	8	8	16	16
Origanum, Oil of, in 1 oz. g. s. bottles.....oz.	1	1	1	1	1	1
Potassium, Cyanide of, in ⅛ oz. bottles.....oz.	⅛	⅛	⅛	⅛	¼	¼
Sarsaparilla, Fluid Extract of, in 8 oz. bottles.....oz.	16	21	32	48	64	64
Senna, Confection of, in 1 lb. jars.....lb.	1	1	1	2	2	2
Sinapism Paper.....packs.	1	1	1	1	1	1
Soda, Phosphate of, exsiccated, in 4 oz. bottles.....oz.	8	8	8	8	8	16
“ Sulphite of, exsiccated, in 4 oz. bottles.....oz.	8	8	16	24	32	48	8
Sulphur, in roll.....lb.	6	6	6	6	6	6
Tar, Wood, in 8 oz. w. m. bottles.....oz.	8	16	24	32	48	48
Taraxacum, Fluid Extract of, in 8 oz. bottles.....oz.	8	8	8	8	8	16
Tolu, Balsam of, in 8 oz. bottles.....oz.	8	8	8	8	8	8
Valerian, Fluid Extract of, in 8 oz. bottles.....oz.	8	8	16	24	32	32
Veratrum Viride, Fluid Extract of, in 1 oz. bottles.....oz.	1	1	1	1	2	2
“ “ Tincture of, in 2 oz. bottles.....oz.	2	2	2	2	2	6
Wax, yellow, in paper.....oz.	8	8	12	16	16	16
Wild-cherry Bark, Fluid Extract of, in 8 oz. bottles.....oz.	16	16	32	48	64	64

HOSPITAL STORES.

ARTICLES.	ALLOWANCE FOR SIX MONTHS.					ALLOWANCE FOR THREE MONTHS.	
	Post of 1 Co.	Post of 2 Cos.	Post of 4 Cos.	Post of 6 Cos.	Post of 1 Reg't.	General Hospital of 250 beds.	500 Men in the Field.
HOSPITAL STORES.							
Arrow-root, in tins..... lb.	5	5	10	15	20	25
Berley, in tins..... lb.	5	10	15	20	25	30
Beef, Extract of, Liebig's, in porcelain jarslb.	6	10	15	20	25	30	16
Brandy, in 32 oz. bottles bott.	12	16	24	32	36	48	12
Candles, sperm or composition, half length, in boxes lb.	4
" Wax, for night operations lb.	1	1	1	2	2
Cinnamon, ground, in 4 oz. bottlesoz.	4	8	12	16	20	24
Cocoa or Chocolate, in tins or cakes..... lb.	2	4	6	8	10	12
Corn Starch, in tins lb.	2	4	6	8	10	12
Farina, in tinslb.	2	4	6	8	10	12	4
Gelatin, shred, in 4 oz. packages.....oz.	4	8	16	24	24	32
Ginger, ground, in 8 oz. bottlesoz.	8	8	16	16	24	32
Milk, concentrated, in 1 lb. tins..... lb.	12	18	16
Nutmegs, in 2 oz. bottles..... oz.	2	2	4	6	8	8	2
Pepper, black, ground, in 4 oz. bottles.....oz.	8	12	16	24	32	48	8
Sugar, white, crushed, in boxes or tins.....lb.	12	18	24	48	64	120	12
Tapioca, in tins.....lb.	2	4	6	8	10	12
Tea, black, in tins or original chests..... lb.	10	15	25	40	60	100	5
Whiskey, in 32 oz. bottles.....bott.	12	24	36	48	72	120	24
Wine, in 32 oz. bottles.....bott.	12	24	24	36	48	60

INSTRUMENTS, DRESSINGS, STATIONERY, FURNITURE
AND APPLIANCES—EXPENDABLE.

ARTICLES.	ALLOWANCE FOR SIX MONTHS.					ALLOWANCE FOR THREE MONTHS.	
	Post of 1 Co.	Post of 2 Cos.	Post of 4 Cos.	Post of 6 Cos.	Post of 1 Regt.	General Hospital of 250 beds.	500 Men in the Field.
INSTRUMENTS.							
Nipple Shields	4	6	8	12	18
Probangs	6	6	9	12	16	24	6
Syringes, penis, glass	12	18	24	36	48	48	6
" " rubber	2	3	4	6	6	12	2
Trusses, single	2	3	4	6	8	12	2
" double	1	1	1	2	2	2
DRESSINGS.							
Bandages, roller, unbleached and unsized, assorted, in a pasteboard box—1 dozen, 1 inch by 1 yard; 2 dozen, 2 inches by 3 yards; 2 dozen, 2½ inches by 3 yards; 1 dozen, 3 inches by 4 yards; ½ dozen, 3½ inches by 5 yards; 1 dozen, 4 inches by 6 yards; ½ dozen, 4 inches by 8 yards.....doz.	12	18	24	32	48	96	32
Bandages, suspensory	2	4	6	8	8	10	4
Binder's Boards, 2½ by 12 inches	12	18	24	36	48	48	12
" " 4 by 17 inches	12	18	24	36	48	48	12
Cotton Bats	2	3	4	6	8	10	2
" Wadding	4	4	4	6	8	10	2
Flannel, red, all wool	4	6	8	10	12	20	4
Gutta Percha Cloth	2	4	6	8	8	12	2
Lint, patent	2	4	6	8	10	12	4
" picked	1	2	3	4	4	10	2
Muslin, unbleached, unsized, 1 yard wide.....yds.	8	10	16	20	25	40	10
Needles, Cotton, Thimble, in case	1
" assorted	1	1	1	1	1	1
" upholsterer's	2	2	2	2	2	2
Oakum, fine, picked	10	15	20	30	40	60	5
Oiled Muslin, in 2 yard pieces	4	4	6	8	10	20	4
" Silk, in 2 yard pieces	2	2	4	6	8	10	2
Plaster of Paris, in 5 lb. tins	5	5	10	10	15	25
Pencils, hair, (assorted sizes) in vials	6	12	18	24	26	36	6
Pins	2	3	5	8	10	20	3
Plaster, adhesive, 5 yards in a can	10	15	20	30	40	60	5
" Isinglass, 1 yard in a case	4	6	8	12	16	20	10
Silk, gray, for shades	¼	½	1	1	1	2	½
" ligature	½	½	1	1½	2	3	½
Splints	1	1	1	2	2	3	1
" Smith's Anterior.....	2	3	3	4	4	6	3
" material for making, felt	2	4	6	8	8	12	2
Sponge, fine, small pieces	6	10	16	20	24	30	10
Tape, cotton, or twilled stay binding.....	2	3	6	8	10	15	3
Thread, linen, unbleached.....oz.	1	2	3	4	5	12	1
" cotton, spools, assorted.....	2	2	2	4	4	12
Tow	2	4	8	12	16	20	10

ARTICLES.	ALLOWANCE FOR SIX MONTHS.					ALLOWANCE FOR THREE MONTHS.	
	Post of 1 Co.	Post of 2 Cos.	Post of 4 Cos.	Post of 6 Cos.	Post of 1 Reg't.	General Hospital of 250 beds.	500 Men in the Field.
<i>DRESSINGS—Continued.</i>							
Towels.....doz.	2	4	6	8	10	12	2
" roller.....doz.	$\frac{1}{2}$	1	$1\frac{1}{2}$	2	$2\frac{1}{2}$	3
Twine, $\frac{1}{2}$ coarse.....oz.	8	16	24	32	48	48	8
<i>STATIONERY.</i>							
Blank Books, cap, half bound, 4 quires.....no.	3	4	4	5	6	10	2
Elastic Bands, assorted, gross.....no.	1	1	1	2	2	3	1
Envelopes, printed, official 50, letter 50.....no.	300	300	400	500	600	1000	300
India Rubber.....pieces.	2	2	3	4	4	8	1
Ink, 2 oz. bottles.....no.	4	4	6	6	8	24	4
" carmine, in 1 oz. bottles.....no.	2	2	3	4	5	6	1
Mucilage.....bott.	1	1	2	2	3	4
Paper, blotting.....qrs.	$\frac{1}{2}$	$\frac{1}{2}$	$\frac{1}{2}$	1	1	2	$\frac{1}{4}$
" filtering, round, grey, 10 inches.....packs.	1	1	1	2	2	2
" litmus, blue and red, of each.....sheets.	2	2	2	2	2	4
" wrapping, white and blue.....qrs.	2	4	6	8	10	12	2
" writing: cap, 1 quire; letter, 2 quires; note, 1 quire....qrs.	16	16	24	32	48	96	8
Pencils, lead.....no.	6	6	12	12	18	48	6
Penholders.....no.	4	6	8	10	12	24	2
Pens, steel.....no.	48	48	72	96	96	120	48
Sealing Wax.....sticks.	1	1	2	3	4	6
Tape, red.....pieces.	1	1	2	2	2	4
<i>MISCELLANEOUS.</i>							
Brooms.....no.	6	10	15	20	24	50
Brushes, scrubbing.....no.	6	10	15	20	24	50
" for stove blacking.....no.	1	1	1	2	2	2
Clothes Line.....ft.	300	400	600	800	1000	1600
Corks, velvet, best, assorted.....doz.	16	20	24	36	48	72	12
Lamp Wicks, pieces.....doz.	6	6	12	12	12
Pill Boxes, $\frac{2}{3}$ paper, $\frac{1}{3}$ turned wood.....doz.	8	12	18	24	30	60	6
Rubber Scrubbers.....no.	4	4	8	8	12	36
Rotten-stone, for polishing instruments, in papers.....lb.	$\frac{1}{2}$	$\frac{1}{2}$	$\frac{1}{2}$	1	1	1
Sheepskins, dressed, for plasters.....no.	2	3	4	6	8	12	1
Stove-blackening, or polish, papers.....no.	6	6	6	8	10	12
Tubing, glass, assorted sizes.....lb.	$\frac{1}{2}$	$\frac{1}{2}$	$\frac{1}{2}$	1	1	1
" rubber, black, to match.....yds.	1	1	1	2	2	2
Vials—six, 6 oz.; six, 4 oz.; six, 2 oz.; six, 1 oz.....doz.	12	16	20	30	40	60	4

ARTICLES.	OUTFIT ALLOWANCE FOR—								
	Temporary Post.	Post of 1 Co.	Post of 2 Cos.	Post of 4 Cos.	Post of 6 Cos.	Post of 1 Reg't.	General Hospital of 250 beds, 500 Men in the Field.		
<i>Books—Continued.</i>									
Diseases of Women, Thomas'	copy.	1	1	1	1	1	1		
Dispensary	copy.	1	1	1	1	1	1		
Ear, Trültsch on	copy.	1	1	1	1	1	1		
Eye, Stellwag on	copy.	1	1	1	1	1	1		
Histology, Stricker's	copy.	1	1	1	1	1	1		
Hygiene, Parke's	copy.	1	1	1	1	1	1		
Jurisprudence, Taylor's or Stillé & Wharton	copy.	1	1	1	1	1	1		
Meteorology, Loomis'	copy.	1	1	1	1	1	1		
Midwifery, Hodge's	copy.	1	1	1	1	1	1		
" Cazeaux'	copy.	1	1	1	1	1	1		
Ophthalmoscope, Zander	copy.	1	1	1	1	1	1		
Pathology, Surgical, Billroth's	copy.	1	1	1	1	1	1		
Physics, Ganot's	copy.	1	1	1	1	1	1		
Physiology, Flint's	copy.	1	1	1	1	1	1		
Practice of Medicine, Flint's	copy.	1	1	1	1	1	1		
" " Wood's	copy.	1	1	1	1	1	1		
" " Reynold's	copy.	1	1	1	1	1	1		
" " Aitken's	copy.	1	1	1	1	1	1		
" " Niemyer's	copy.	1	1	1	1	1	1		
Recruits, Examination of, Tripler's	copy.	1	1	1	1	1	1		
Skin, Diseases of, Tilbury Fox	copy.	1	1	1	1	1	1		
Surgery, Erichsen's	copy.	1	1	1	1	1	1		
" Gross'	copy.	1	1	1	1	1	1		
" Holmes'	copy.	1	1	1	1	1	1		
" Guthrie's Commentaries	copy.	1	1	1	1	1	1		
Therapeutics, Stillé's	copy.	1	1	1	1	1	1		
" Waring's	copy.	1	1	1	1	1	1		
" Mechanical, Wales'	copy.	1	1	1	1	1	1		
Woodward on "Camp Diseases"	copy.	1	1	1	1	1	1		
Woodward's Hospital Steward's Manual	copy.	1	1	1	1	1	1		
Case, Diet and Prescription Book	no.	1	1	1	1	1	1		
Morning Report Book	no.	1	1	1	1	1	1		
Order and Letter Book	no.	1	1	1	1	1	1		
Record of Deaths	no.	1	1	1	1	1	1		
Register, Meteorological	no.	1	1	1	1	1	1		
" of Patients	no.	1	1	1	1	1	1		
" " small, flexible covers	no.	1	1	1	1	1	1		
" Surgical Operations	no.	1	1	1	1	1	1		
Regulations, Army	no.	1	1	1	1	1	1		
BEDDING.									
Bed Sacks	no.	20	12	18	36	48	60	300	20
Beds, water, india-rubber	no.	1	1	1	1	1	1	1	1
Blankets, white, gray for the field	no.	40	40	60	80	120	150	700	40
Blanket Cases, canvas	no.	4	4	4	4	4	4	4	4
Counterpanes, according to pattern	no.	20	20	30	45	60	90	300	20
Cushions, rubber, for air, small	no.	2	2	2	4	4	6	8	2
" " " with open centre	no.	1	1	2	3	3	4	6	1

ARTICLES.	OUTFIT ALLOWANCE FOR—							
	Temporary Post.	Post of 1 Co.	Post of 2 Cos.	Post of 4 Cos.	Post of 6 Cos.	Post of 1 Reg't.	General Hospital of 250 beds.	500 Men in the Field.
BEDDING—Continued.								
Gutta Percha Bed Covers, so made as to form, when united, a continuous coveringno.	4	4	6	8
Mattresses, hairno.	10	15	20	40	50	60	280
Mosquito Bars, when specially requiredno.	10	12	15	30	48	60	260	5
Pillows, hairno.	10	15	20	40	50	60	280	5
“ featherno.	2	4	6	10	12	16	48
Pillow Cases, whiteno.	40	40	60	60	120	150	700	40
“ Ticksno.	20
Sheetsno.	40	40	60	90	150	200	900
HOSPITAL CLOTHING.								
Drawers, according to pattern no.	20	20	40	80	100	130	500
Gowns, dressing, according to pattern no.	...	6	10	18	30	50	150
Shirts, cotton, according to patternno.	20	20	40	80	100	130	500	6
Slippers, according to pattern, pairsno.	...	6	10	18	30	50	150
Socks, woolen, according to pattern, pairsno.	...	20	40	80	100	130	500
FURNITURE.								
Bed Screens, material for coveringyds.	...	6	6	12	18	24	30
Bedsteads, ironno.	10	10	16	30	45	60	270
Chairsno.	12	18	24	36	60	80	250
“ rockingno.	...	1	1	2	2	2	12
Clocks, wooden, smallno.	1	2	2	2	2	3	4
Close-stoolsno.	2	2	2	4	6	8	20
Earth Closet Commodes, or “ “ “ fittings, }no.	...	1	1	1	2	2	6
Looking-glasses, smallno.	2	2	4	6	9	12	24
Range, size as required, with fixtures completeno.	1	1	1	1
Refrigerator, size as requiredno.	...	1	1	1	1	1	1
Stoves, cooking, size as required, with fixtures completeno.	1	1	1
Tables, bedsideno.	...	10	16	30	45	60	250
Trays, butler'sno.	...	1	1	2	3	4	10
Tubs, bathno.	1	1	1	2	3	3	4
Window Curtains, when neededno.
MISCELLANEOUS.								
Basins, tin, small, for dressersno.	2	2	2	3	4	5	10	2
“ washhandno.	6	6	10	15	20	25	25	4
Bed Pans, delf, shovel-shaped—metal for fieldno.	1	2	2	3	4	6	6	2
Bedticket Framesno.	15	15	20	40	60	80	300
Boards, washno.	1	1	1	1	2	2	3
Boilers, tin, size as requiredno.	1	2	2	3	4	6	6
Bowls, delfno.	16	16	24	48	72	96	300
Buckets, leatherno.	6	6	10	20	30	40	60	2
“ tin, coveredno.	2	2	3	4	6	8	10	1
“ woodenno.	2	2	4	6	8	12	12
Caldrons, with tin covers, 20 gallonsno.	...	1	1	1	1	1	2
Candlesticksno.	6	6	10	18	24	36	36	3

ARTICLES.	OUTFIT ALLOWANCE FOR—							
	Temporary Post.	Post of 1 Co.	Post of 2 Cos.	Post of 4 Cos.	Post of 6 Cos.	Post of 1 Reg't.	General Hospital of 250 beds.	500 Men in the Field.
<i>MISCELLANEOUS—Continued.</i>								
Cleavers	1	1	1	2	2	2	3
Cork Extractor	1	1	1	1	1	1	1
Corkscrews	1	1	2	2	2	3	6	1
Cork-pressers	1	1	1	1	1	1
Colanders	1	1	2	2	3	4	6	1
Dippers, tin, assorted	3	4	6	8	12	18	24	2
Dishes, assorted sizes	8	12	12	18	24	24	36
Erasers	1	1	1	1	2	2	4
Feeding Cups	2	2	3	4	6	8	12	2
Flesh Forks	1	1	1	1	2	2	2
Funnels, glass, ½ pint	1	2	2	2	3	4	4
“ tin, pint	1	2	2	2	4	6	6	1
Graters, nutmeg, and large	no.	2	2	2	2	2	4	1
Gridirons	no.	1	1	2	2	2	3	4
Hatchets	no.	1	1	2	2	3	4	2
Hones	no.	1	1	1	1	1	1	1
Kettles, tea, iron	no.	2	2	2	2	3	4
Knives, table	24	24	36	46	72	96	300	12
“ carving	no.	2	2	2	3	4	5	6
“ bread	no.	1	1	1	2	2	3	6
“ butcher's	no.	1	1	2	2	2	3	6
Forks, table	24	24	36	48	72	96	300	12
“ carving	no.	2	2	2	3	4	5	6
Ladles	no.	2	2	2	3	4	4	6
Lamps	no.	2	4	4	6	8	8
Lanterns, glass	no.	2	2	2	3	4	6	3
Litters, hand	no.	3	3	6	10	20	30	24
Measures, graduated, glass, 4 oz	no.	2	2	3	4	5	6	6
“ “ minim	no.	1	1	1	1	2	2	2
“ tin, gallon to pint—sets	no.	1	1	1	1	2	2	2
Medicine Cases, furnished by the list	no.	1	1	1
“ Measuring Glasses, large	no.	2	2	2	4	6	8	10
“ Panniers, furnished by the list—sets	no.	1	1
“ Spoons, delf	no.	2	2	2	4	6	6	10
“ Wagons, furnished by the list, (see note)	no.
Mess Chest, furnished by the list	no.	1	1	1
Milk Cans, 2 gallons, graduated	no.	...	1	1	2	2	3	6
Mills, coffee	no.	1	1	1	1	1	2	1
Mortars and Pestles, wedgewood, 3½ to 8 inches	no.	2	2	2	3	4	6	6
Mugs, delf, tin for field	18	18	24	36	60	84	200	12
Pans, frying	no.	1	1	1	2	3	3	5
“ sauce	no.	1	1	1	2	3	3	5
“ tin	no.	1	1	1	2	3	3	5
Pill Machines	no.	1	1	1	1	1
“ Tiles, 5 to 10 inches	no.	2	2	2	3	4	4	6
Pitchers, delf, two sizes	no.	4	4	5	6	10	12	20
Plates, delf	18	18	24	36	60	84	250
“ metal, for dressings	no.	1	1	1	1	2	4	6
Portfolios	no.	1	1	1	2	2	4	1
Pots, chamber, delf	no.	5	5	8	12	12	12	24
“ inodorous, Army pattern	no.	...	1	1	1	1	1	2

ARTICLES.	OUTFIT ALLOWANCE FOR—							
	Temporary Post.	Post of 1 Co.	Post of 2 Cos.	Post of 4 Cos.	Post of 6 Cos.	Post of 1 Reg't.	General Hospital of 250 beds. 500 Men in the Field.	
<i>MISCELLANEOUS—Continued.</i>								
Pots, coffee, tin	2	2	2	4	5	6	10	2
“ mustard	1	2	2	2	2	4	8	1
“ pepper	1	2	2	2	2	4	8	1
“ tea, delf	2	2	2	4	5	6	10
Razor, brush and strop, in case.....	1	1	1	1	2	2	4	1
Rulers	1	1	1	1	2	2	4
Sadirons	2	3	4	5	6	8	12
Salt Cellars	4	4	5	6	10	12	20	4
Saws, butcher's.....	1	1	1	1	2	4	4	1
“ wood.....	1	1	1	2	2	4	6
Scales and Weights, prescription, one set of Apothecaries' and one set of Gramme weights	1	1	1	1	2	2	3	1
“ “ shop	1	1	1	1	1	2	3
“ platform	1
Slates, with pencils	1	1	1	2	3	6
Spatulas, 3 inch and 6 inch.....	2	3	3	4	4	6	8	2
Spirit Lamps, (brass for field).....	1	1	1	2	2	3	6	1
Spit Mugs, without tops	2	2	3	4	5	6	10
Spittoons, hard rubber	5	5	8	15	24	30	100
Spoons, table	18	18	24	36	60	84	250	10
“ tea	18	18	24	36	60	84	250	10
Steels	1	1	1	2	2	4	8	1
Tape-measure	1	1	1	1	1	2	1
Test Tubes	12	12	12	18	18	24	24
Thermometers.....	1	1	1	2	2	4	5
Tools, small chest of.....	1	1	1	1	1	1
Tubs, wash	2	2	2	3	4	4	12
Tumblers, glass	18	18	24	36	60	84	200
Urinals, glass.....	2	2	3	4	6	8	12

ALLOWANCE OF SURGICAL INSTRUMENTS FOR MEDICAL OFFICERS.

PERSONAL SET.

FOR CAPITAL OPERATIONS.

Two Amputating Knives, one long, one medium.
 Two Catlings, one long, one medium.
 One Cartilage Knife.
 One Bistoury, straight.
 Three Scalpels.
 One Capital Saw, long, bow, two blades.
 One Chain Saw.
 One Metacarpal Saw.
 One Hey's Saw.
 One Trephine, conical.
 One Trephine, small crown.
 One Razor, small.
 One Raspatory.
 One Elevator.
 One Brush.
 One Bone Forceps, Liston's, long, sharp, spring handle.
 One Bone Forceps, broad-edged, slightly curved, spring handle.
 One Bone Forceps, gnawing, spring handle.
 One Bone Forceps, sequestrum, spring handle.

One Lithotomy Forceps.
 One Artery Forceps.
 One Artery Needle.
 One Artery Needle Key.
 Twelve Surgeon's Needles.
 Six Wire-Suture Needles.
 One Tourniquet, screw, with pad.
 One Tenaculum.
 One Scissors.
 One Chisel.
 One Gouge.
 One Trocar and Canula, straight.
 Four Drills, (with one handle.)
 Two Retractors.
 Twelve yards Suture Wire, silver.
 $\frac{1}{4}$ ounce Ligature Silk.
 $\frac{1}{2}$ ounce Wax.
 One Mahogany Case, brass bound, slide catch.
 One Leather Pouch.

FOR MINOR OPERATIONS.

One Amputating Knife.
 One Finger Knife.
 One Hernia Knife.
 Three Bistouries, one straight, one curved, one curved—
 probe pointed.
 Two Scalpels.
 One Artery Forceps.
 One Ball Forceps.
 One Dressing Forceps.
 One Dissection Forceps.
 One Oesophageal Forceps.
 One Trousseau's Tracheotomy Forceps.
 One Artery Needle.
 One Artery Needle Key.
 Twelve Surgeon's Needles.
 Six Wire-Suture Needles.
 Three Scissors, one straight, one angular, one curved.
 One Tenaculum.
 One Trocar and Canula, curved.
 One Belloc's Canula.
 Two Tracheotomy Tubes, (double.)
 One Tonsillotome.

One Oesophageal Probang.
 One Nelaton's Probe.
 One Director.
 One Cutting Pliers, small.
 One Wire Ecraseur.
 Two Grooved Staffs, medium and large.
 One Syme's Staff.
 One Sound, small, straight.
 Six Steel Bougies, silvered, double curve, Nos. 1 and 2,
 3 and 4, 5 and 6, 7 and 8, 9 and 10, 11 and 12.
 Three G. E. Bougies, olive pointed.
 Three Silver Catheters, Nos. 3, 6 and 9.
 Six Elastic Catheters, Nos. 1, 3, 5, 7, 9 and 11.
 One Prostate Catheter, silver.
 Twenty-four Suture Pins, silvered.
 Six yards Suture Wire, silver.
 $\frac{1}{4}$ ounce Ligature Silk.
 $\frac{1}{2}$ ounce Wax.
 Six Serre-fines.
 One Mahogany Case, brass bound, slide catch.
 One Leather Pouch.

FOR THE EYE AND EAR.

One Anel's Syringe.
 One set Bowman's Probes and Dilators, silver.
 Two Styles, silver.
 One Cataract Knife, Beer's.
 Two Cataract Needles, one lance-headed.
 One Broad Needle.
 One Curette.
 One Cystotome.
 One Tyrrell's Hook.
 One Critchett's Spoon.

One pair Cilia Forceps.
 One Sharp Hook.
 One Strabismus Hook.
 One pair Scissors, straight.
 One pair Scissors, curved on the flat.
 One pair Scissors, strabismus.
 Six Needles, fine.
 $\frac{1}{4}$ ounce Silk, fine.
 One Scoop and Hook, for removing foreign bodies from
 the Eye and Ear.

FOR THE EYE AND EAR.—Continued.

One Speculum, Laurence's.	One pair Forceps, angular, for removing foreign bodies from the Ear, Wilde's.
One Iris Knife.	One set Test Types, Snellen's.
One pair Iris Scissors.	One scruple of Sulphate of Atropia, (in g. s. bottle.)
Two pair Iris Forceps, one straight, one curved.	Two scruples of Alcoholic Extract of Calabar Bean, (in g. s. bottle.)
One Eustachian Catheter.	One Sheet Calabazized Gelatin.
One set Ear Specula, Wilde's or Toynbee's.	One Mahogany Case, brass bound, slide catch.
One Ophthalmoscope.	One Leather Pouch.
Two Laryngeal Mirrors, one square, one elliptical, with Reflector.	
One yard Silver Suture Wire, fine.	

FOR THE POCKET CASE.

One Scalpel.	One Tenaculum.
Three Bistouries, one straight, one curved, one curved—probe pointed.	One Scissors.
One Tenotome.	One Director.
One Thumb Lancet.	One Probe.
One Artery Forceps.	One Nelaton's Probe.
One Dissection Forceps.	One Caustic Holder.
One Dressing Forceps.	One Silver Catheter, compound.
One Artery Needle.	Six yards Suture Wire, silver.
Six Surgeon's Needles.	$\frac{1}{4}$ ounce Ligature Silk.
Three Wire-Suture Needles.	$\frac{1}{4}$ ounce wax.
One Exploring Needle.	One Russia Leather Case.

FOR LOCAL ANÆSTHESIA, DIAGNOSIS, ETC.

One Nebulizer, Richardson's—with Two Tubes, one single—one double.	Litmus Paper—red, six sheets—blue, six sheets.
One Medical Thermometer.	One Hypodermic Syringe, 3 points.
One Urinometer.	One Mahogany Case, brass bound, slide catch.
	One Leather Pouch.

ONE LEATHER TRUNK FOR THE SET.

CONTENTS OF THE CASES OF INSTRUMENTS, MEDICINES, ETC., TO WHICH REFERENCE IS MADE IN THE STANDARD SUPPLY TABLE.

FIELD CASE.

Two Amputating Knives, one long, one medium.	One Dissection Forceps.
Two Catlings, one long, one medium.	One Artery Needle.
Two Scalpels.	One Artery Needle Key.
Three Bistouries, one straight, one curved, one curved—probe pointed.	Twelve Surgeon's Needles.
One Hernia Knife.	Six Wire-Suture Needles.
One Finger Knife.	One Tourniquet, screw, with pad.
One Capital Saw, long, bow, two blades.	One Tenaculum.
One Chain Saw.	Two Scissors, one straight, one angular.
One Metacarpal Saw.	Two Retractors.
One Hey's Saw.	One Trocar and Cannula, curved.
One Trephine, conical.	One Nelaton's Probe.
One Razor, small.	One Director.
One Raspator.	Six Steel Bougies, silvered, double curve, Nos. 1 and 2, 3 and 4, 5 and 6, 7 and 8, 9 and 10, 11 and 12.
One Elevator.	Three Silver Catheters, Nos. 3, 6 and 9.
One Brush.	Six Elastic Catheters, Nos. 1, 3, 5, 7, 9 and 11.
One Bone Forceps, broad edged, slightly curved, spring handle.	Six yards Suture Wire, silver.
One Bone Forceps, sequestrum, spring handle.	Four ounces Ligature Silk.
One Artery Forceps.	$\frac{1}{2}$ ounce Wax.
One Ball Forceps.	One Mahogany Case, brass-bound, slide catch.
One Dressing Forceps.	One Leather Pouch.

POCKET CASE.

One Scalpel.	One Thumb Lancet.
Three Bistouries, one straight, one curved, one curved— probe pointed.	One Artery Forceps.
One Tenotome.	One Dressing Forceps.
Six Surgeon's Needles.	One Artery Needle.
Three Wire-Suture Needles.	One Nelaton's Probe.
One Exploring Needle.	One Caustic Holder.
One Tenaculum.	One Silver Catheter, compound.
One Scissors.	Six yards Suture Wire, silver.
One Director.	$\frac{1}{4}$ ounce Ligature Silk.
One Probe.	$\frac{1}{8}$ ounce Wax.
	One Russia Leather Case.

POST MORTEM CASE.

One Cartilage Knife.	One Saw.
Three Scalpels.	One Enterotome.
One Tenaculum.	One Scissors.
One Dissection Forceps.	One Blowpipe.
One Chain and Hooks.	One Chisel.
Two Needles and Thread.	Mahogany Box.

TOOTH-EXTRACTING CASE—ARMY PATTERN.

One Forceps, for extracting upper front root.	One Forceps, for right and left upper molar.
One Forceps, for upper and lower back root.	One Forceps, for lower bicuspid and canine.
One Forceps, for upper wisdom, either side.	One Forceps, for lower molar, cow horn, either side.
One Forceps, for upper bicuspid and canine, either side.	Two Elevators, Nos. 6 and 7, for lifting roots of bicu- spids and molars.
One Forceps, for upper incisor and canine.	One Ebony-Handle Gum Lancet.
One Forceps, for lower incisor and bicuspid, either side.	
One Forceps, for lower molar, either side.	

OBSTETRICAL CASE.

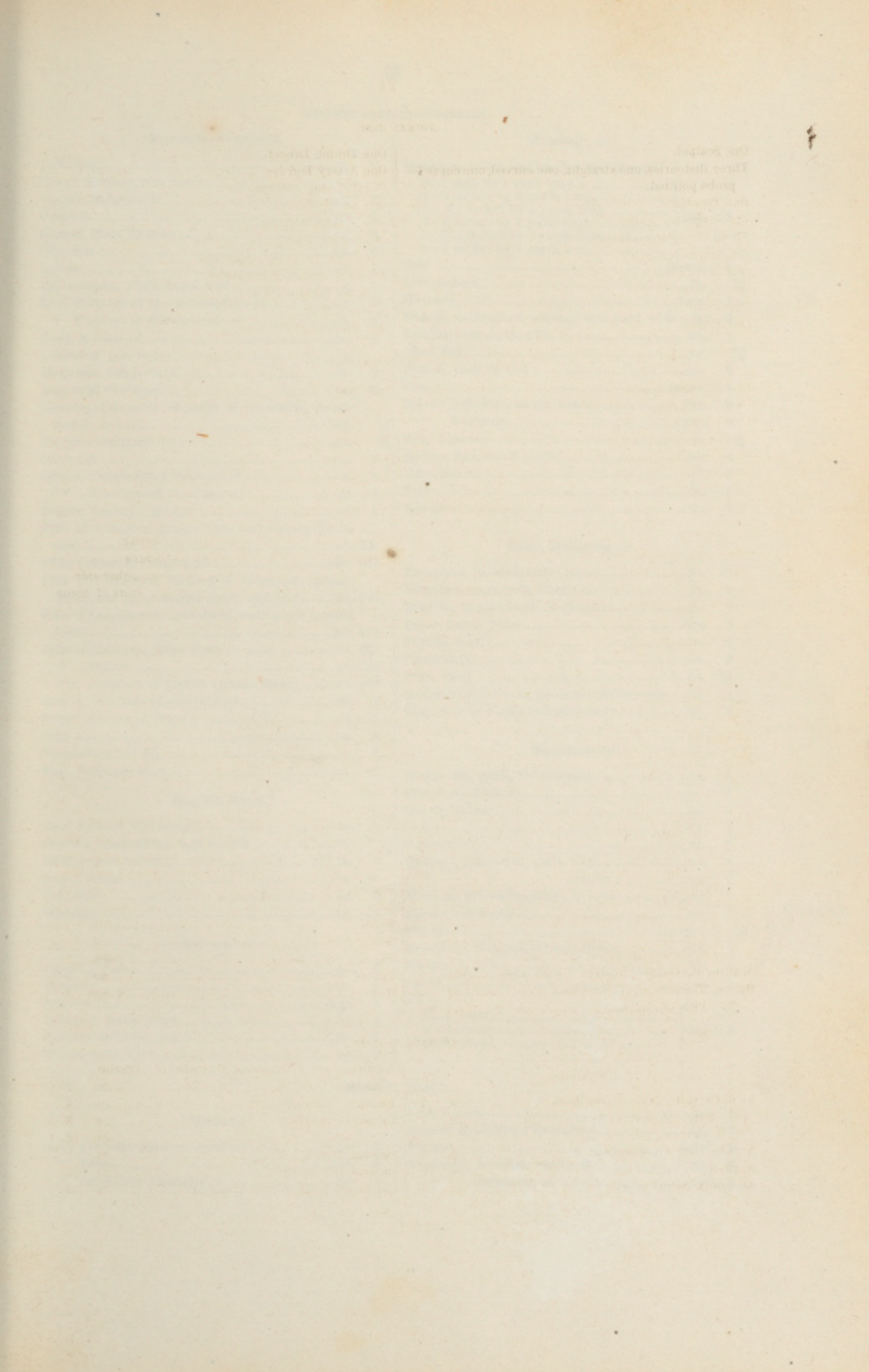
One Long Forceps.	One Perforator.
One Short Forceps.	One Set Barnes' Dilators.
One Vectis.	One Simpson's Sound.
One Crotchet and Blunt Hook.	Russia Leather Case.

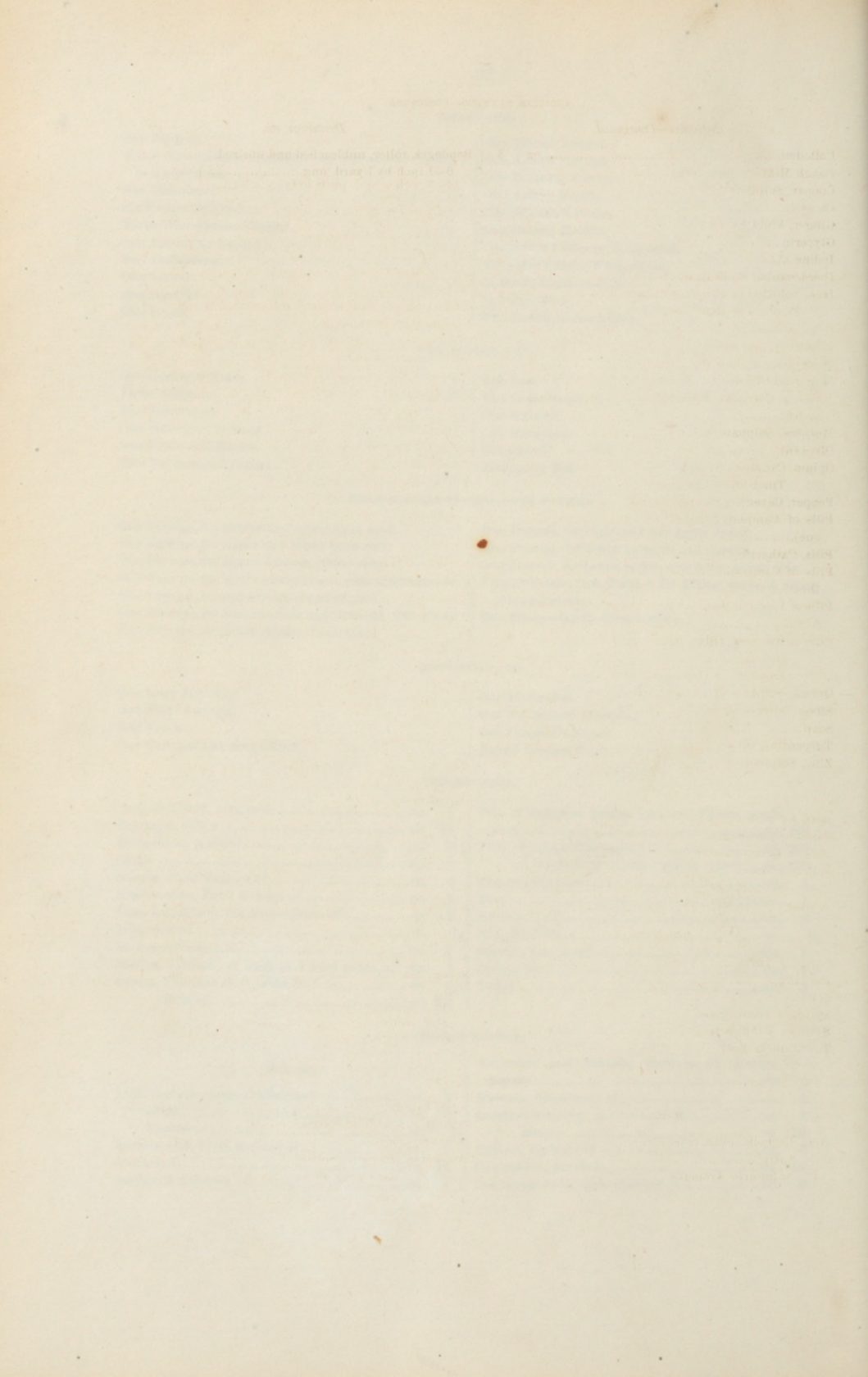
MEDICINE CASE.

Acid, Sulphuric Aromatic.....oz.	1	Pills of Camphor (grains two) and Opium (grain one).....no.	200
Bandages, roller.....no.	24	Pills, Cathartic Compound.....no.	200
Chloroform, purified.....oz.	6 $\frac{1}{2}$	" of Sulphate of Quinia, (grains three).....no.	200
Corks.....no.	6	Plaster, isinglass.....yd.	1
Ginger, Fluid Extract of.....oz.	2	Pins.....paper.	1
Ipecacuanha, Fluid Extract of.....oz.	1	Scissors.....pair.	1
Iron, Solution of the Subsulphate of.....oz.	2	Silk, ligature.....oz.	$\frac{1}{4}$
Lint, patent.....lb.	$\frac{1}{4}$	Sponge, fine, small.....piece.	1
Medicine Glass.....no.	1	Spoon, tea.....no.	1
Muslin, unbleached, unsized, 1 yard wide.....yds.	2	Towel.....no.	1
Opium, Tincture of, (Laudanum).....oz.	2		
" Pills of.....no.	200		

MEDICINE PANNIER.

<i>Medicines.</i>		Antimony and Potassa, Tartrate of, (Tartar Emetic).....oz.	1
Acid, Carbolic, pure, crystallized.....oz.	2	Bismuth, Subnitrate of.....oz.	4
" Citric.....oz.	2	Cerate, blistering.....oz.	3
" Tannic.....oz.	$\frac{1}{2}$	" simple.....oz.	16
Aconite root, Fluid Extract of.....oz.	3	Chloral, Hydrate of.....oz.	6
Alcohol.....oz.	12	Chloroform, purified.....oz.	12
Ammonia, Solution of.....oz.	8	Colchicum Seed, Fluid Extract of.....oz.	3





MEDICINE PANNIER—Continued.

<i>Medicines—Continued.</i>	
Collodion.....oz.	3
Cough Mixture, (see note).....oz.	
Copper, Sulphate of.....oz.	1
Cresote.....oz.	2
Ginger, Fluid Extract of.....oz.	6
Glycerin.....oz.	6
Iodine.....oz.	1
Ipecacuanha, Fluid Extract of.....oz.	3
Iron, Solution of the Subsulphate of.....oz.	4
" Tincture of the Chloride of.....oz.	4
Lead, Acetate of.....oz.	3
Linament, (see note).....oz.	
Magnesia, Sulphate of.....lb.	2
Mercurial Ointment.....oz.	6
Mercury, Corrosive Chloride of, (Corrosive Sublimated).....oz.	$\frac{1}{8}$
Morphia, Sulphate of.....oz.	$\frac{1}{4}$
Olive Oil.....oz.	6
Opium, Camphorated Tincture of.....oz.	6
" Tincture of, (Laudanum).....oz.	6
Pepper, Cayenne, ground.....oz.	1
Pills of Camphor (grains two) and Opium (grain one).....no.	300
Pills, Cathartic Compound.....no.	600
Pills of Compound Extract of Colocynth (grains three) and Ipecacuanha (grain one-half).....no.	600
Pills of Ipecacuanha, powdered, and Opium (grains five).....no.	400
Pills of Mercury, (Blue Mass).....no.	500
" Opium.....no.	700
" Sulphate of Quinia (grains three).....no.	500
Quinia, Sulphate of, compressed.....oz.	2
Silver, Nitrate of, fused.....oz.	1
Soap.....oz.	4
Turpentine, Oil of.....oz.	6
Zinc, Sulphate of.....oz.	2

Hospital Stores.

Beef, Extract of, Liebig's.....lb.	1
Candles, composition, half length.....lb.	$\frac{1}{2}$
Milk, concentrated.....lb.	1
Sugar, white.....oz.	16
Tea, black.....oz.	8
Whiskey.....oz.	24

Instruments.

Cupping Tins.....no.	4
Probang.....no.	1
Scissors.....pair.	1
Syringes, penis, glass.....no.	4
Syringe, self-injecting.....no.	1
Tourniquets, acid.....no.	2

Medicines.

Acid, Carbolic, pure, crystallized.....oz.	4
" Citric.....oz.	8
" Sulphuric Aromatic.....oz.	8

Dressings, etc.

Bandages, roller, unbleached and unsized, 6—1 inch by 1 yard long.....doz.	3
12—2 inches by 3 yards long.....doz.	3
12—2 $\frac{1}{2}$ inches by 3 yards long.....doz.	3
4—3 inches by 4 yards long.....doz.	3
1—3 $\frac{1}{2}$ inches by 5 yards long.....doz.	3
1—4 inches by 8 yards long.....doz.	3
Felt.....pieces.	8
Lint, patent.....lb.	$\frac{1}{2}$
Matches.....box.	1
Muslin, unbleached, unsized, one yard wide.yds.	3
Needles, cotton, thimble, in case.....no.	1
Oiled Silk.....yd.	$\frac{3}{8}$
Pencils, hair, in vial.....no.	6
Pins.....paper.	1
Plaster, adhesive, in tin can.....yds.	2
" isinglass.....yds.	2
Silk, ligature.....oz.	$\frac{1}{4}$
Sponge, fine, small pieces.....no.	4
Tape, pieces.....no.	2
Tow.....lb.	1
Towels.....no.	3

Books, Stationery, etc.

Envelopes, printed, letter size.....no.	25
Inkstand, traveller's, filled.....no.	1
Morning Report Book, Regiment.....no.	1
Paper, letter, ruled.....qrs.	2
Pencils, lead.....no.	2
Penholders.....no.	2
Pens, steel.....no.	12
Register of Patients, small, flexible covers.....no.	1
Tray, tin, for books and stationery.....no.	1

Miscellaneous.

Basins, tin, small, for dressers.....no.	1
Plates, for dressers.....no.	1
Candle Holder.....no.	1
Corks.....doz.	2
Corkscrew.....no.	1
Measure, graduated, glass, 2 oz.....no.	1
" " " " minim.....no.	1
Medicine Measuring Glass, in case.....no.	1
Mortar and Pestle.....no.	1
Pill Boxes.....paper.	$\frac{1}{2}$
Scales and Weights, prescription.....set.	1
Spatula, 3 inch.....no.	1
Spoon, tea.....no.	1
Vials, 2—4 ounce.....no.	6
2—2 ounce.....no.	6
2—1 ounce.....no.	6

MEDICINE WAGON.

Acid, Tannic.....oz.	1
Aconite Root, Fluid Extract of.....oz.	8
Alcohol.....bott.	2
Ammonia, Aromatic Spirits of.....oz.	8
" Carbonate of.....oz.	8

MEDICINE WAGON—Continued.

Medicines—Continued.

Ammonia, Solution of.....oz.	32	Potassa, Bitartrate of, powdered, (Cream of Tartar).....oz.	16
Antimony and Potassa, Tartrate of, (Tartar Emetic).....oz.	1	Potassa, Permanganate of.....oz.	4
Arsenite of Potassa, Solution of, (Fowler's Solution).....oz.	4	Potassium, Iodide of.....oz.	16
Belladonna, Alcoholic Extract of.....oz.	1	Quina, Sulphate of.....oz.	15
Bismuth, Subnitrate of.....oz.	16	Rochelle Salt, powdered.....oz.	32
Calabar Bean, Extract of.....oz.	$\frac{1}{4}$	Seneca, Fluid Extract of.....oz.	8
Camphor.....oz.	8	Silver, Nitrate of, in crystals.....oz.	1
Castor Oil.....bott.	4	" fused.....oz.	1
Cerate, Blistering.....oz.	8	Soap, Castile.....lb.	8
" Resin.....lb.	1	Soda, Bicarbonate of.....oz.	32
" Simple.....lb.	3	" Chlorinated Solution of.....lb.	2
Chloral, Hydrate of.....oz.	32	Squill, Syrup of.....lb.	4
Chloroform, purified.....oz.	64	Turpentine, Oil of.....bott.	1
Colchicum Seed, Fluid Extract of.....oz.	8	Wax, white.....oz.	2
Collodion.....oz.	4	Zinc, Solution of Chloride of.....oz.	32
Colocynth, Compound Extract of.....oz.	8	" Sulphate of.....oz.	1
Copper, Sulphate of.....oz.	2		
Croton Oil.....oz.	1	<i>Hospital Stores.</i>	
Ether, Compound Spirits of, (Hoffman's Anodyne).....oz.	8	Beef, Extract of, Liebig's.....lb.	16
Ether, Stronger, for Anæsthesia.....oz.	64	Erandy.....bott.	12
" Spirit of Nitrous, (Sweet Spirits of Nitre).....oz.	8	Candles, sperm, half length.....lb.	4
Flaxseed Meal.....lb.	4	Corn Starch.....lb.	10
Ginger, Fluid Extract of.....oz.	8	Farina.....lb.	10
Glycerin, pure.....oz.	16	Milk, concentrated.....lb.	16
Gum Arabic, powdered.....oz.	8	Nutmegs.....oz.	4
Iodine.....oz.	1	Pepper, black, ground.....oz.	8
Ipecacuanha, Fluid Extract of.....oz.	8	Salt, table.....lb.	2
Iron, Powder of the Subsulphate of.....oz.	4	Sugar, white crushed.....lb.	15
" Solution of the Subsulphate of.....oz.	8	Tea, black.....lb.	10
" Tincture of the Chloride of.....oz.	16	Whiskey.....bott.	24
Lead, Acetate of.....oz.	8		
Magnesia, Sulphate of.....lb.	8	<i>Instruments.</i>	
Mercurial Ointment.....oz.	16	Cupping Tins.....no.	10
Mercury, Corrosive Chloride of, (Corrosive Sublimite).....oz.	2	Nebulizer, Richardson's, (with two tubes).....no.	1
Mercury, Mild Chloride of, (Calomel).....oz.	2	Pocket Case.....no.	1
" Pill of, (Blue Mass).....oz.	8	Probangs.....no.	6
Morphia, Sulphate of.....oz.	1	Scarificators.....no.	2
Mustard Seeds, black, ground.....lb.	6	Scissors.....no.	2
Olive Oil.....bott.	2	Sponge-holder, for the throat.....no.	1
Opium, Camphorated Tincture of.....oz.	24	Stethoscope.....no.	1
" Compound Powder of, (Dover's Powder).....oz.	8	Syringe, hard rubber, 8 ounce.....no.	1
" Deodorized Tincture of.....oz.	4	" hypodermic.....no.	1
" Powdered.....oz.	8	" rubber, self-injecting.....no.	1
" Tincture of (Laudanum).....oz.	16	Syringes, penis, glass.....no.	6
Pepper, Cayenne, ground.....oz.	8	" " rubber.....no.	4
Peppermint, Spirit of.....oz.	8	Tooth-Extracting Case, Army pattern, (see list).....no.	1
Pills, Compound Cathartic.....no.	200	Tourniquets, field.....no.	4
" of Arsenic, (one-twentieth of a grain each).....no.	200	" screw.....no.	2
" of Camphor, (grains two) and Opium (grain one).....no.	300	Trusses, single.....no.	4
Pills, of Opium.....no.	200		
" of Sulphate of Quinia, (grains three).....no.	200	<i>Dressings, etc.</i>	
Podophyllum.....oz.	2	Binder's Boards, 2 $\frac{1}{2}$ by 12 inch pieces.....no.	16
Potassa, Acetate of.....oz.	8	" " 4 by 17 inch pieces.....no.	16
" Bicarbonate of.....oz.	8	Cotton Bats.....no.	2
		" Wadding, sheets.....no.	4
		Flannel, red.....yds.	4
		Gutta Percha Cloth.....yds.	4
		Lint, patent.....lb.	6
		" picked.....lb.	2

MEDICINE WAGON—Continued.

Dressings, etc.—Continued.

Muslin	yds.	15
Needles, Corton, Thimble, in case	no.	1
Oakum	lb.	5
Oiled Muslin	yds.	4
“ Silk	yds.	4
Pencils, hair	no.	12
Pins, papers	no.	6
Plaster, adhesive	yds.	10
“ Isinglass	yds.	10
Roller Bandages, assorted	doz.	36
Silk, gray, for shades	yds.	1/2
“ Ligature	oz.	2
Splints	set	1
“ Smith's Anterior	no.	6
“ Material for making, felt, pieces	no.	10
Sponge, fine	oz.	10
Suspensory Bandages	no.	8
Tape, pieces	no.	4
Tow	lb.	10
Towels	doz.	2
Twine	oz.	8

Books, Stationery, etc.

Anatomy, Gray's	copy	1
Blank Books, quarto	no.	2
Envelopes	no.	300
Elastic Bands, assorted, gross	no.	1
Ink, 2 ounce bottles	no.	6
Inkstand, travellers'	no.	1
Order and Letter Book	no.	1
Paper, blotting	qr.	1/2
“ wrapping, white and blue	qrs.	2
“ writing	qrs.	8
Pencils, lead	no.	12
Peholders	no.	6
Pens, steel	gross	1
Portfolio	no.	1
Register of Patients, small, flexible covers	no.	1
Surgery, Erichsen's	copy	1
U. S. Dispensatory	copy	1

Bedding.

Blankets, in two cases	no.	20
Gutta Percha Bed Covers	no.	8

Miscellaneous.

Axe	no.	1
Basins, tin, small, for dressers	no.	2
“ washhand	no.	3
Bed Pans, metal	no.	2
Buckets, leather	no.	2
Camp Kettle, small, with cover	no.	1
Corks, assorted	doz.	12
Corkscrew	no.	1
Funnel, tin	no.	1
Grater, nutmeg	no.	1
Hatchet	no.	1
Hone	no.	1
Lanterns, glass	no.	3
Matches, boxes	no.	2
Measure, graduated, glass, 2 ounce	no.	1
Measures, graduated, glass, minim	no.	2
Medicine Measuring Glasses	no.	2
Mortar and Pestle, wedgewood	no.	1
Mugs, tin	no.	12
Pill Boxes	doz.	8
“ Tile	no.	1
Plates, dressing	no.	4
Razor, Brush with Strop, in case	no.	1
Saw	no.	1
Scales and Weights, prescription	no.	1
Scoops, tin	no.	3
Sheepskins, dressed	no.	2
Spade	no.	1
Spatulas, 3 and 6 inch	no.	2
Spoons, table	no.	12
“ tea	no.	12
Tumblers, tin	no.	12
Urinals, glass	no.	2
Viats, assorted	doz.	8

MESS CHEST.

Basins, tin, small	no.	12
“ “ washhand	no.	2
Box for Pepper	no.	1
“ “ Salt	no.	1
Canister for Butter	no.	1
“ “ Coffee	no.	1
“ “ Sugar	no.	1
“ “ Tea	no.	1
Cleaver	no.	1
Cups, tin	no.	1
Dipper	no.	1
Dishes, tin, (assorted sizes)	no.	6
Grater	no.	1
Gridiron	no.	1
Kettle, camp, with cover	no.	1
“ tea, iron	no.	1
Knife and Fork, carving, of each	no.	1
Knives and Forks, of each	no.	12
Ladles	no.	2
Mill, Coffee	no.	1
Mugs, britannia, half-pint	no.	12
Pan, frying	no.	1
“ sauce	no.	1
Plates, tin	no.	6
Pot, coffee, tin	no.	1
“ iron	no.	1
“ tea, tin	no.	1
Saw butcher's	no.	1
Spoons, table	no.	12
“ tea	no.	12
Tray, tin	no.	1
Tumblers, tin	no.	12

TEST CHEST.

Solid Chemicals in 2 oz. glass stoppered jars.

Arsenious Acid.
Ammonia, Molybdate of.
" Oxalate of.
Baryta, Hydrate of.
" Nitrate of.
Calcium, Carbonate of.
" Chloride of.
Cobalt, Nitrate of.
Copper, Foil.
Iron, Sulphate of.
" Sulphuret of.
" Wire.
Litmus.
Oxalic Acid.
Manganese, Oxide of.
Potassium, Bichromate of.
" Ferridcyanide of.
" Ferrocyanide of.
Soda, Carbonate of.
" Hydrate of.
" Hyposulphite of.
" Phosphate of.
Uranium, Nitrate of.
Urea.
Zinc, pure.

Solutions.

Antimoniate of Potassa, Solution of.

Solutions—Graduated.

Solution of Ammonia.
" Nitrate of Baryta.
" Carbonate of Soda.
" Chloride of Sodium.
" Phosphate of Soda.
" Soap.
Normal Hydrochloric Acid.
" Nitric Acid.
" Sulphuric Acid.

Apparatus.

Beakers	no.	3
Blowpipe.....	no.	1
" Re-agents, box.....	no.	1
" Forceps.....	no.	1
" Charcoal		
Borers, Cork, set.....	no.	1
Burettes	no.	3
Capsules, Porcelain, nests	no.	2
Crucibles, "	doz.	1/2
Casserole.....	no.	1
Corks	doz.	3
Files	no.	3
Flasks, 5 oz.....	no.	4
" 1 oz.....	no.	1
" 100 cc. graduated.....	no.	1
" Schuster's.....	no.	5
Funnels, 2 1/2 inch.....	no.	1
" blown glass, nest.....	no.	1
Funnel Tubes.....	no.	2
Filters, cut, package of.....	no.	1
Graduates, Centimetre	no.	2
Graduated Jar, glass stoppered.....	no.	1
Platinum Foil and Wire, box.....	no.	1
Porons Plates	no.	2
Paper, Filtering, package of.....	no.	1
" Litmus, "	no.	1
" Turmeric, "	no.	1
Pipettes.....	no.	3
Rods, glass.....	doz.	1/2
Specific Gravity Apparatus.....	no.	1
Spirit Lamp	no.	1
Thermometers, Chemical.....	no.	1
Test Tubes, nests.....	no.	2
" " Brush	no.	1
" " Stoppered.....	no.	1
Tubing, Rubber	yds.	4
" Glass	lbs.	4
Watch Glasses.....	no.	6
Watch Glass Holders	no.	1
Wine Glasses, beaked.....	no.	2
Woullf's Bottles.....	no.	1

NOTES.

1. Medicine Wagons will be distributed as the Surgeon General shall direct.
2. The "Cough Mixture" consists of Syrup of Squills and Camphorated Tincture of Opium, each four fluid ounces, with two fluid drachms of Fluid Extract of Ipecacuanha. The dose is one Teaspoonful.
3. The "Liniment" is prepared with equal parts of Solution of Ammonia, Oil of Turpentine, and Olive Oil

(FORM 1.)

The United States,

To.....Dr.

For reimbursement for monies expended by him, as follows:

PLACE AND DATE.	ARTICLES AND QUANTITIES.	DOLLARS.	CENTS.		
<p>(INDORSEMENT.)</p> <p>FORM 1.</p> <p>Account for Medicines purchased and paid for by at on the.....day of....., 187 .</p>					

I certify that the above account is correct and just; that I purchased and paid for the articles above charged, as shown by the appended receipted bill, and that such purchase was necessary because.....

.....
.....Surgeon, U. S. Army.

Station:.....

Date:.....

(NOTE.—The original bill for the articles must be appended to this Form as a Voucher. In the receipt to the original bill must be stated the place, date, amount received, and name of the officer from whom received, in full.)

(FORM 2.)

*Invoice of Medical Supplies purchased this day by.....
for use at.....as per bill for reimbursement—to be taken
up and accounted for on his next Medical and Hospital Property Return.*

PLACE AND DATE.	ARTICLES.	QUANTITY.
<p>(INDORSEMENT.)</p> <p>FORM 2.</p> <p>Invoice of Medical Supplies purchased by on theday of, 187 , at.....</p>		

I certify that the above Invoice is correct.

.....
.....Surgeon, U. S. Army.

Station:

Date:

(FORM 3.)

Invoice of Medicines, Hospital Stores, Bedding, etc., contained in

Packages issued to....., U. S. Army.

ARTICLES.	QUANTITY.	ARTICLES.	QUANTITY.
<p>(INDORSEMENT.)</p> <p>FORM 3.</p> <p>Invoice of Hospital Supplies issued by , 187 ; to at</p>			

I certify that the preceding Invoice is correct.

.....
 Surgeon, U. S. Army.

Station:.....

Date:.....

Triplicates.

(FORM 4.)

Receipt for Medicines, Hospital Stores, Bedding, etc., contained in
 Packages issued by....., U. S. Army.

ARTICLES.	QUANTITY.	ARTICLES.	QUANTITY.
<p>(INDORSEMENT.)</p> <p>FORM 4.</p> <p>Receipt for Hospital Supplies received by 187 , from</p>			

I certify that I have received the articles enumerated above.

.....
 Surgeon, U. S. Army.

Station:

Date:

Triplicates.

(FORM 5.)

Packer's List of Medical Supplies contained in.....
 packages, marked.....and issued by
Surgeon, U. S. A.

NUMBER OF BOX, BALE, OR PACKAGE.	CONTENTS.	NUMBER OF BOX, BALE, OR PACKAGE.	CONTENTS.

(INDORSEMENT.)

FORM 5.

Packer's List of Medical Sup-
 plies issued by....., 187 ,
 to

.....
 Med. S. K., U. S. A.

Medical Purveying Depot,, 187 .

(FORM 6.)

Account of Sales of Medical Property at Public Auction at.....
 under the direction of on the..... of
, 187 .

ARTICLES.	NUMBER OR QUANTITY.	PURCHASER.	RATE.	AMOUNT.
			\$	\$
(INDORSEMENT.) FORM 6. Account of Sales of Medical Property sold at....., 187 , under the direction of \$.....				

I certify that the preceding Account of Sales is correct.

.....
 Auctioneer.

I certify that the articles enumerated above were sold at public auction, as stated in the foregoing account, pursuant to [state the orders or authority.]

.....
 Surgeon, U. S. Army.

Duplicates.

