

COLL. CAT.

al

ESTABLISHED 1896.



WX
28
AW6
F6SA2

✓ St. Agnes' Sanitarium.

LIBRARY
SURGEON GENERAL'S OFFICE
DEC. 15. 1899

EAST DIVISION STREET,

FOND DU LAC, WISCONSIN.



THE REPORTER PRESSES, FOND DU LAC.

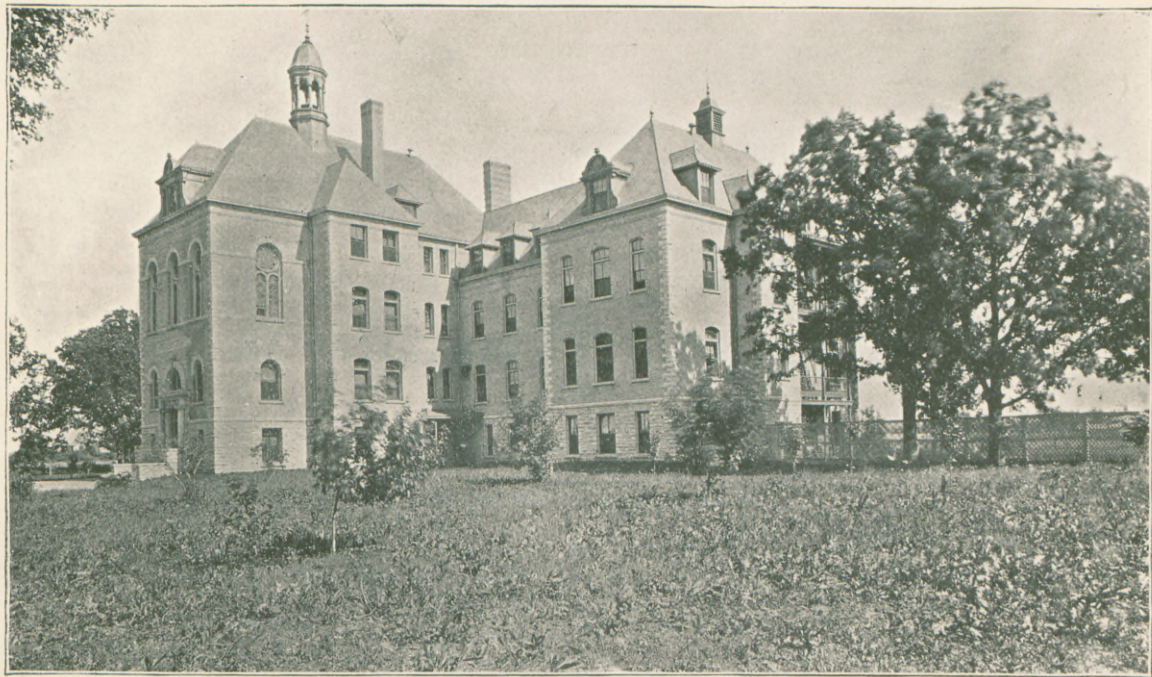


ST. AGNES' SANITARIUM.

164 EAST DIVISION STREET,

FOND DU LAC, WISCONSIN.

IN CHARGE OF THE
SISTERS OF ST. AGNES.



MAIN FRONT.

WEST END,

St. Agnes' Sanitarium.



ST. AGNES' SANITARIUM was opened July 1, 1896, with accommodations for sixty patients. It is situated in the midst of the beautiful scenery which borders the shores of Lake Winnebago, the blue waters of which can be seen from its windows. The grounds comprise ten acres of lawn, scattered about which are a number of large and luxuriantly foliaged oak and elm trees, inviting all, well and convalescent, to rest in their shadows.

The Sanitarium was built at a cost of \$48,000. It is a homelike edifice, in the Colonial style of architecture, constructed of stone and brick, with stone trimmings. It has passenger elevators, is heated by steam and hot water, lighted by electricity, and supplied throughout with hot and cold water and all modern conveniences.

Wide iron balconies on the east, south and west sides, besides offering inviting opportunities for pleasant promenades, greatly facilitate the escape of the inmates in case of a conflagration. To suppress any incipient fire two sets of seventy-five feet of hose are on each floor connected with the water works; a turn of the valves is all that is necessary to put them into immediate use.

All the rooms have electric bells, and speaking tubes connect the various apartments; there are also telephones in the building, whereby any part of the city of Fond du Lac can be reached at any hour.



REAR VIEW LOOKING WEST.

THE HYDRIATRIC DEPARTMENT, WATER CURE, on the ground floor, consisting of three rooms, is equipped with all the modern appliances, affords facilities for the application of various forms of HYDROTHERAPY,

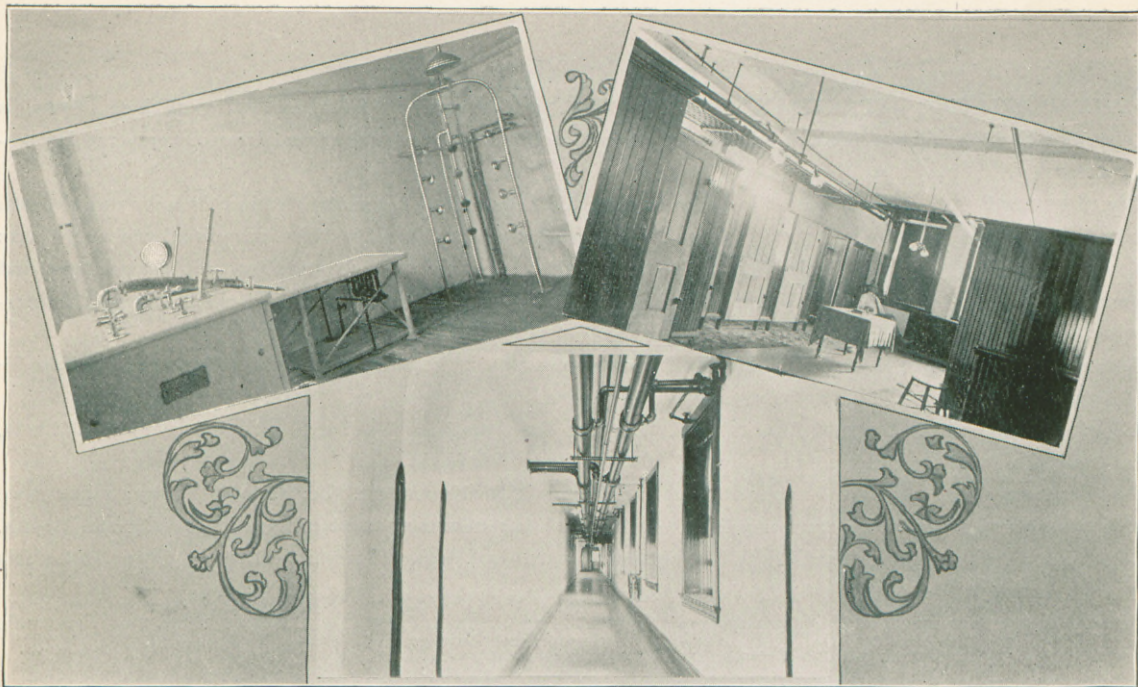
The "DOUCHE ROOM," is wainscotted in white marble; the cement floor is constructed in such a way as to drain it immediately of every drop of water. This room contains a circle bath, a white porcelain bath tub, a sitz bath, and a marble rubbing slab for Turkish baths, besides the "Douche Table," arranged so that the pressure and temperature of the water used can be gauged by a simple and efficient adjustment of valves, according to the directions of the physician.

In the "STEAM CABINET ROOM" hot steam baths are administered, the latest inventions being employed to insure a successful treatment. This room has also a white porcelain bath tub with hot and cold water.

Adjoining this are the "DRESSING ROOMS" and "RESTING PARLORS," furnished with cots, soft woolen blankets, etc., affording the patients every possible comfort after finishing their baths.

This department has no equal for completeness and efficacy in the Northwest. Dr. F. S. Wiley, who has gone through a practical and scientific course of HYDROTHERAPY at one of the greatest universities of Europe, Vienna, the hydrotherapeutic chair of which is filled by the world renowned Prof. Wm. Winternitz, M. D., is physician for this SPECIAL DEPARTMENT.

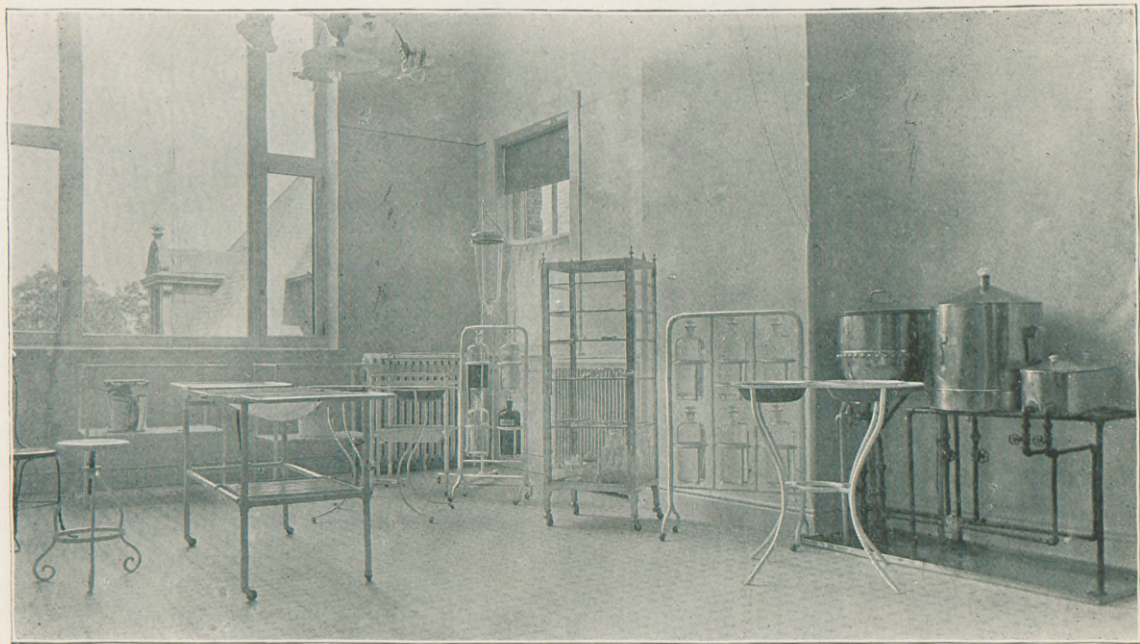
The culinary department, with its dependencies, is located on the ground floor of the west wing, and the meals are distributed to the serving rooms of each floor by means of dumb elevators.



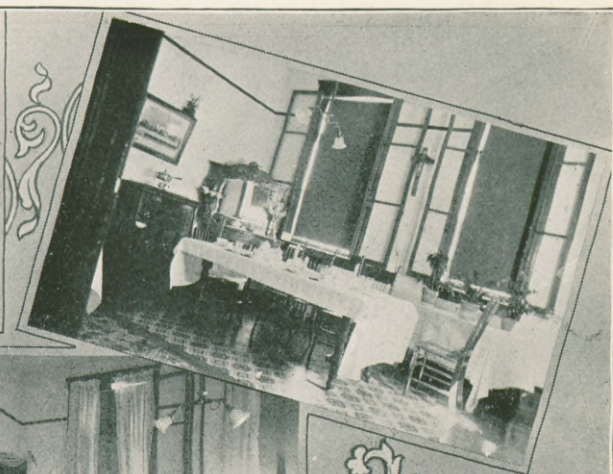
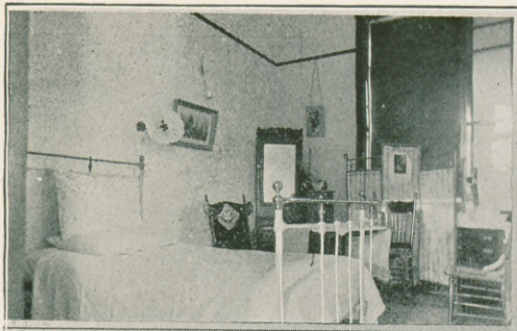
ONE OF THE BATH ROOMS.

BATH ROOM HALLWAY.
(170 Feet Long.)

DRESSING ROOM.



OPERATING ROOM.



INTERIOR OF PRIVATE ROOM,

COSY CORNER IN PRIVATE ROOM.

DINING ROOM.

THE FIRST FLOOR OF THE "MAIN PAVILION" contains a reception hall, parlors, a doctor's office and a pharmacy under competent management, allowing the immediate filling of all prescriptions. The remainder of this floor is devoted to male patients, and contains sitting and dining rooms, comfortably furnished rooms for private patients and a ward of eight beds. There is also a general and private bath, a linen room and a serving room on this, as well as on the floors above.

The second floor is devoted to female patients and is arranged like the first, with the exception of the "MAIN PAVILION," which contains a beautiful chapel for those who desire to attend divine service.

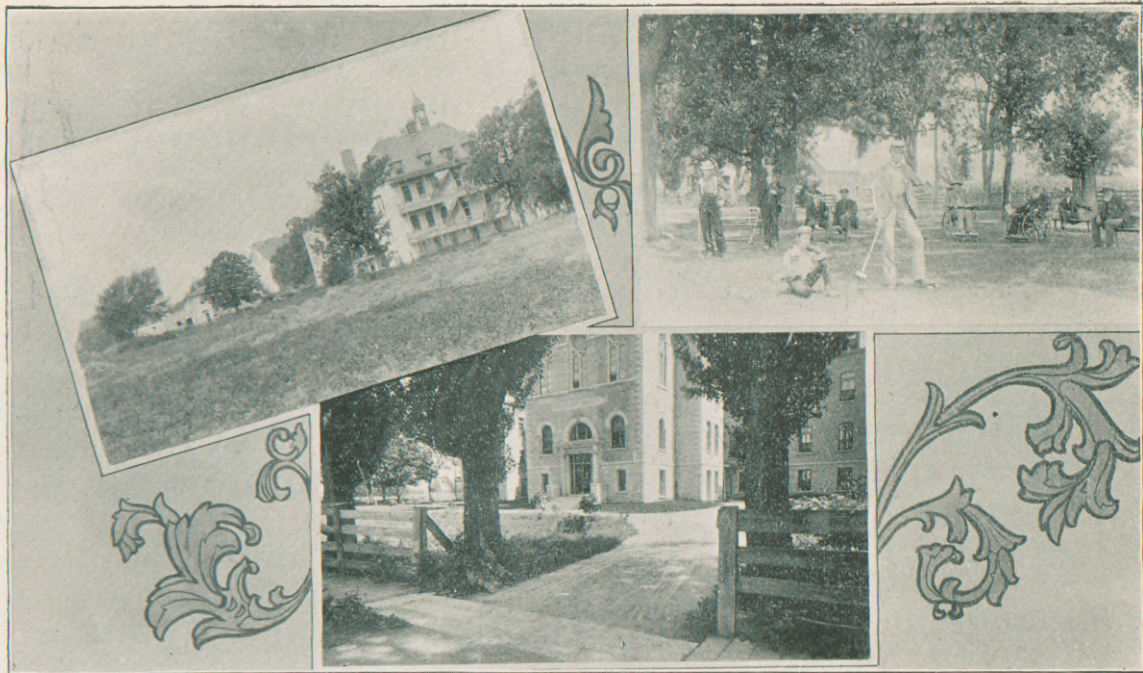
The third floor is the SURGICAL DEPARTMENT. The operating room is situated on this floor; its height is eighteen feet. Great care has been taken to have this room come up to the requirements of modern medical science, and physicians pronounce it eminently satisfactory. It is lighted by a sky light and large plate glass windows, while the floor is of white and blue vitrified tile, with a base of the same material. Adjoining it are the anæsthetic and the sterilizing rooms. The remainder of this floor is designed for patients undergoing surgical treatment.

The water supply is from a deep artesian well on the premises. No purer, fresher, sweeter water can be found than that which issues forth from the great fountain underlying Fond du Lac, which city, popularly known as the "Fountain City," from its numerous fountains which furnish an unfailling supply of pure drinking water.



STAIRWAY IN MAIN VESTIBULE.

MAIN VESTIBULE.



EAST VIEW.

DRIVE WAY TO FRONT OF SANITARIUM.

CROQUET GROUND—EAST OF
BUILDINGS.



SOUTHEAST VIEW.

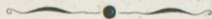
Miscellaneous.



AS far as its relations with the patients are concerned, the Sanitarium is strictly non-sectarian. No cases are refused admission except contagious diseases, insanity, and those who, from the nature of their ailments, would occasion discomfort to the other patients.

The terms for private rooms are very reasonable, and especially is this true of the wards, where patients are cared for at a little more than the price of good board.

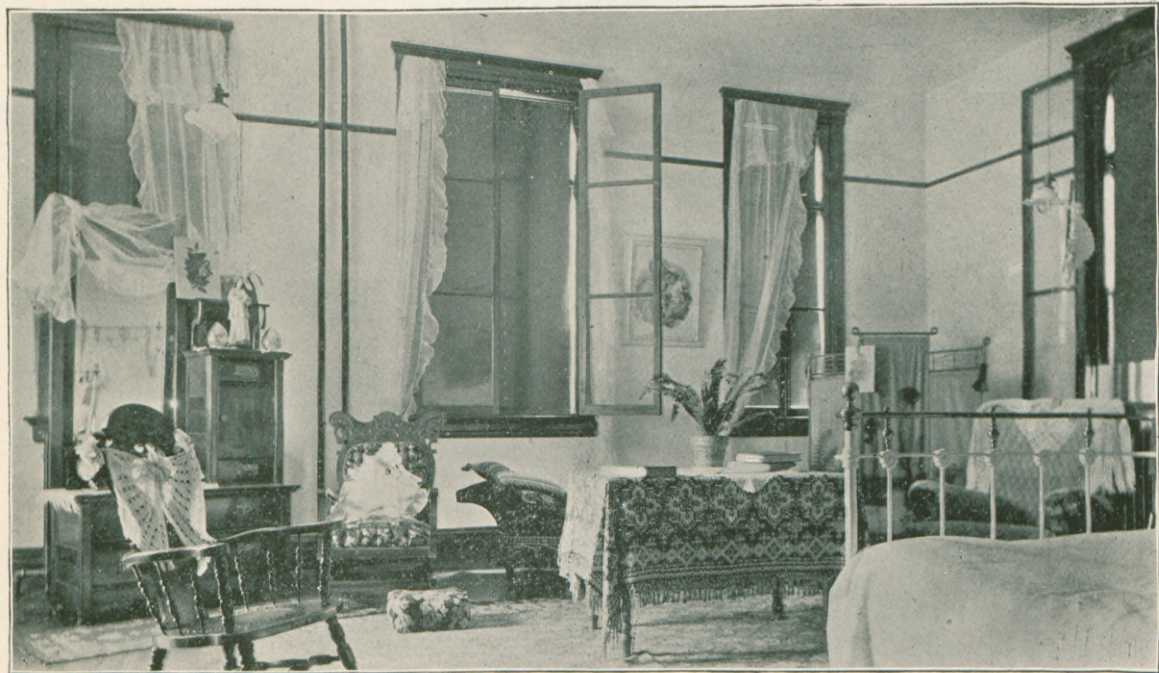
Any physician of good repute may send patients to the Sanitarium, where they will receive the benefits of good scientific nursing and still be under the sole charge of their own physician.



Rules for Admission of Patients.



1. Emergency cases will be received at any hour.
2. Other patients desiring admission should make application at the Sanitarium, through their attending physician or some reputable person, between nine o'clock A. M. and six o'clock P. M.
3. No cases received who, from the nature of their disease, would occasion discomfort to other patients. Sufferers from contagious diseases, or those afflicted with insanity, are not admissible.
4. Physicians are cordially invited to send patients to the St. Agnes' Sanitarium, where they can, if they so desire, direct their entire medical treatment.



INTERIOR OF PARLOR BEDROOM.

Terms of Admission.



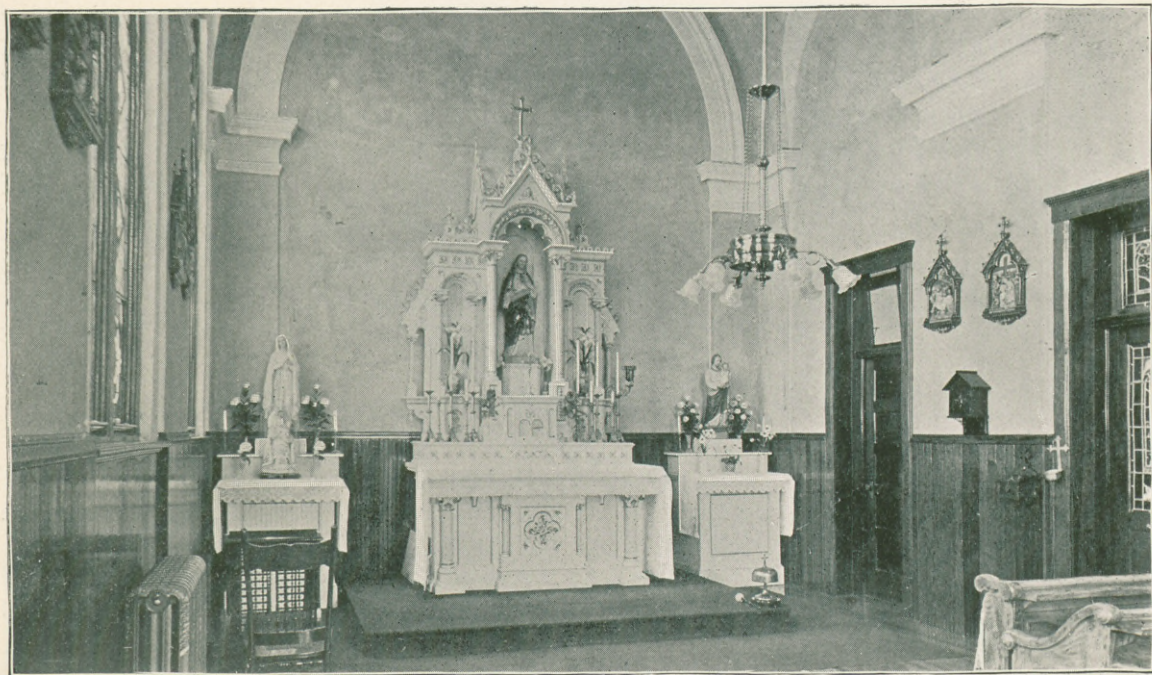
1. Private rooms, board and nursing, \$8.00, \$10.00, \$12.00 and \$15.00 per week, according to board, location, size and furnishing of room. Ward bed, board and nursing, \$5.00 per week. This does not include the charge of the physician or surgeon whom patients employ. All cases requiring a special nurse will be charged extra.
2. In case of an operation an additional charge of \$5.00 will be made for dressing, etc.
3. All bills are payable weekly in advance.



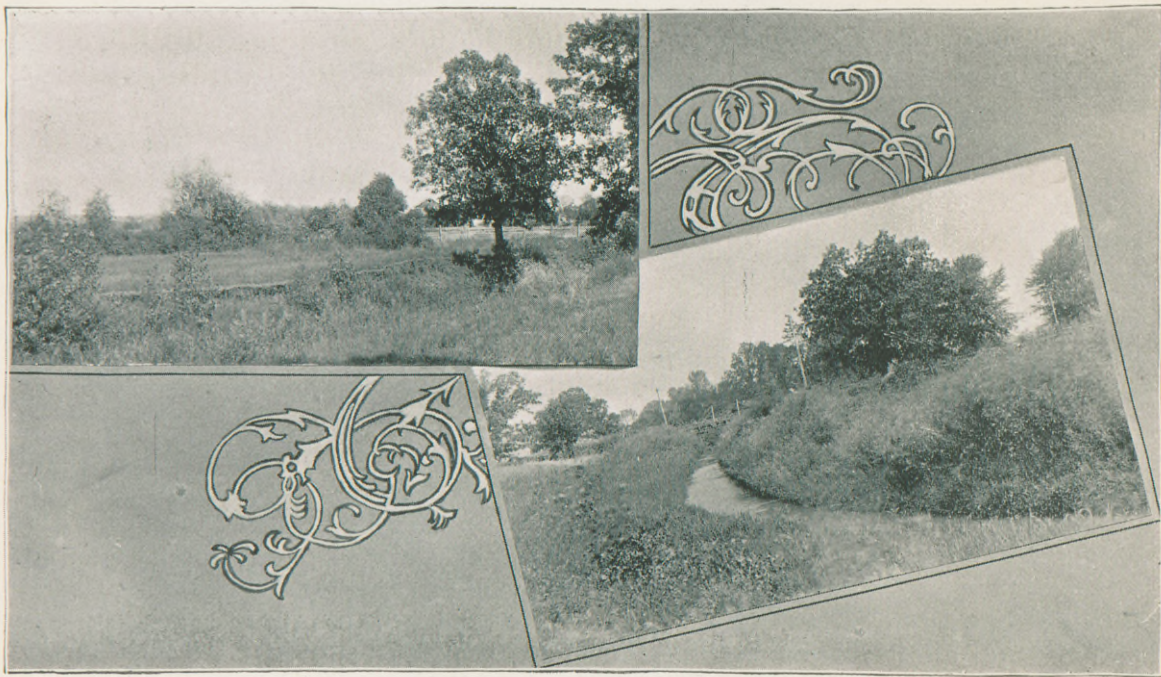
Rules for Visitors.



1. Friends are allowed to visit patients from 10 to 11:30 A. M. and from 3 to 4:30 P. M.—not later without special permission.
2. Visitors are permitted to take eatables, bottles or packages of any kind to patients. All such articles must be marked with the name of the patient for whom they are intended, and left with the Sister in charge, who will give or withhold them at discretion.
3. Visitors are respectfully requested to leave when the bell is rung, at the expiration of the visiting hour.



CHAPEL.



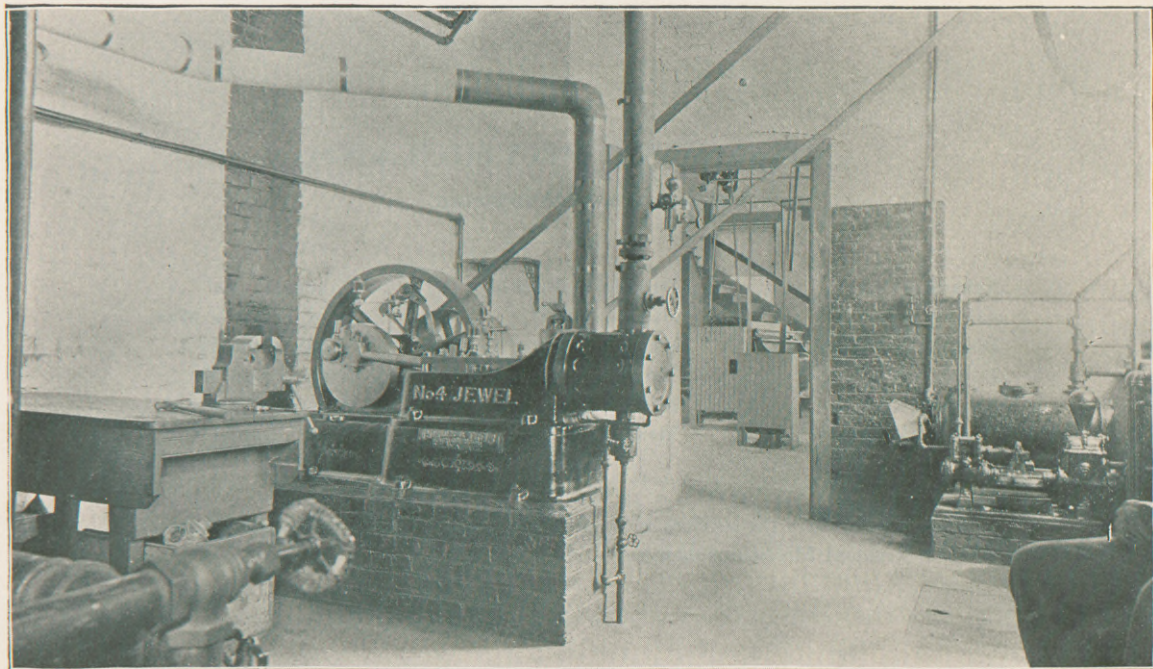
EAST SHORE DENEVEU CREEK.

DENEVEU CREEK—DIVISION STREET BRIDGE.



OAK POINT, SOUTHEAST OF SANITARIUM.

GARDENS, REAR OF SANITARIUM.



ENGINE ROOM.

RESIDENT PHYSICIANS

OF THE CITY OF FOND DU LAC.

Ackerman, James O.
Atkins, Edwin E.
Bishop, Llewellyn
Bowe, Guy C.
Brazeau, George
Connell, James P.

DeSombre, Karl L.
Hinn, Louis P.
Krumme, Simon A.
Mayham, Thomas F.
McNeel, Henry J.
Mears, George V.

Palmer, R. A.
Read, Flora A. Miss
Sapper, Oswald L.
Wiley, Frank S.
Willson, William H.
Wyatt, Daniel B.

Patients can have the services of their own Physicians while at the Sanitarium, whether Resident Physicians or not.

