

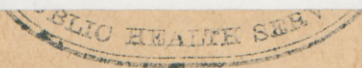
NAVY
B156
1893

U. S. MARINE HOSPITAL SERVICE

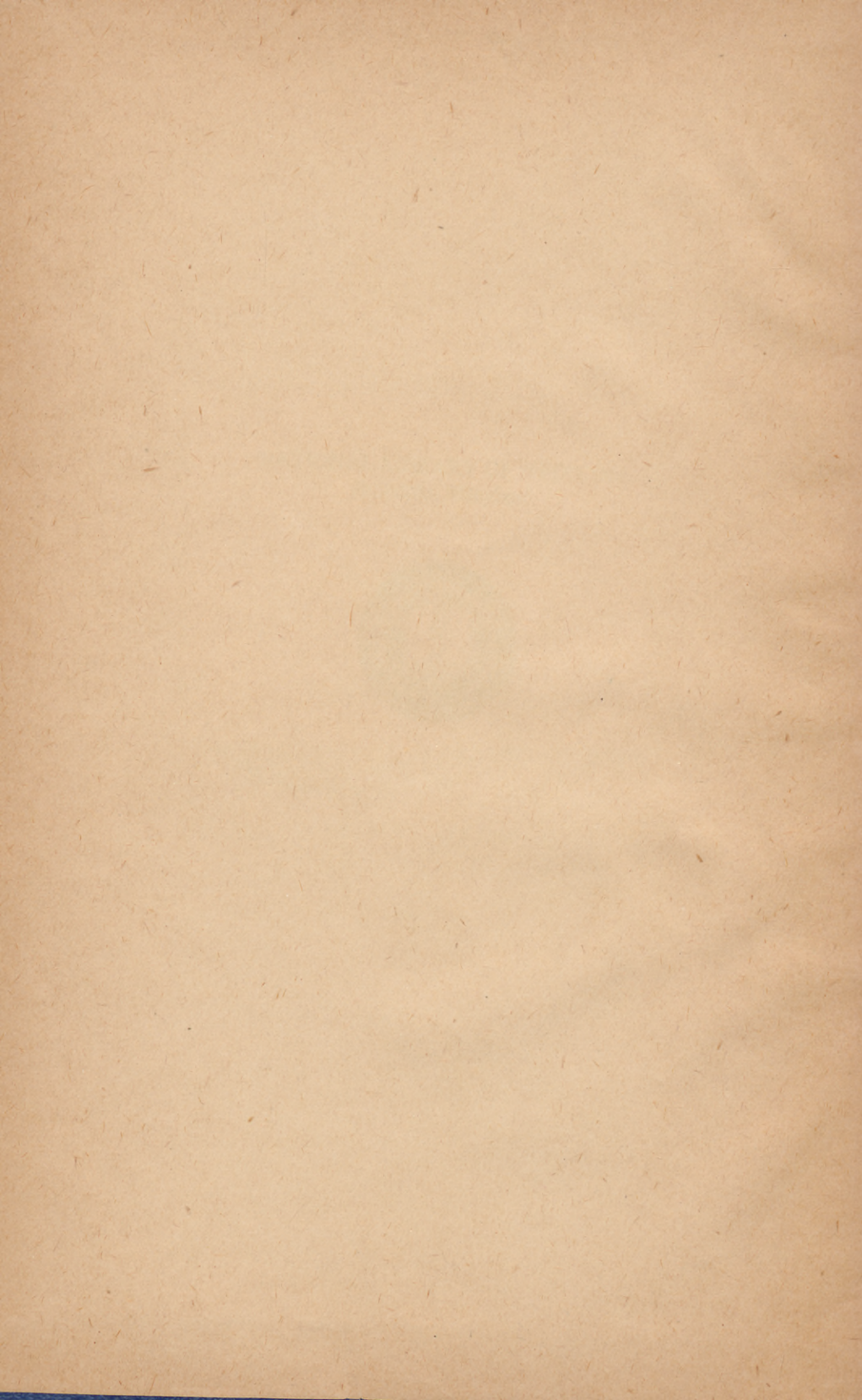
REGULATIONS
CONCERNING UNIFORMS

LIBRARY
U. S. PUBLIC HEALTH SERVICE
WASHINGTON, D. C.

NATIONAL LIBRARY OF MEDICINE
Bethesda, Maryland



NIH Historical Office



WITHDRAWN
from
LIBRARY
NATIONAL INSTITUTES OF HEALTH

LIBRARY
U. S. PUBLIC HEALTH SERVICE
WASHINGTON, D. C.
REGULATIONS

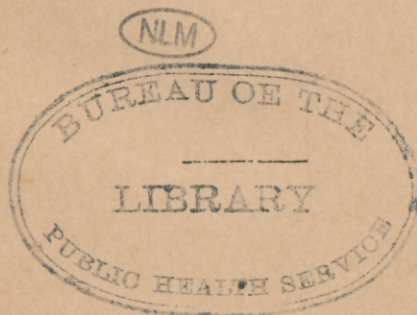
REGARDING THE

UNIFORM OF OFFICERS AND EMPLOYÉS

OF THE

UNITED STATES MARINE HOSPITAL SERVICE,

TREASURY DEPARTMENT.



WASHINGTON :
GOVERNMENT PRINTING OFFICE.
1893.

RA11
B156
1893
cop. 1

WA
U58rg
1893

TREASURY DEPARTMENT,
DOCUMENT No. 1610.
OFFICE OF MARINE HOSPITAL
SERVICE.

041411

REGULATIONS

REGARDING

THE UNIFORM OF OFFICERS AND EMPLOYÉES OF THE
U. S. MARINE HOSPITAL SERVICE.

TREASURY DEPARTMENT,

Washington, D. C., July 3, 1893.

The accompanying recommendations of a Board appointed to consider and revise the Regulations of the Marine Hospital Service, in regard to uniforms, are approved, and the changes will be adopted October 1, 1893.

Such parts of the Revised Regulations, approved December 15, 1890, in conflict herewith, are revoked.

J. G. CARLISLE,

Secretary of the Treasury.

UNIFORM FOR MEDICAL OFFICERS, ACTING ASSISTANT SURGEONS, AND INTERNES.

GENERAL REGULATIONS.

Medical officers and employés of the U. S. Marine Hospital Service will strictly conform to the Regulations regarding uniform as published by the Treasury Department.

Officers and employés of the U. S. Marine Hospital Service at U. S. Marine Hospitals will wear when on duty the prescribed uniform of their respective grades.

Officers and employés of the U. S. Marine Hospital Service shall not wear their uniform or any portion of it when away from their stations and not on duty—with the exception of the overcoat. This does not apply to the uniform that may be worn by officers on special occasions.

DRESS UNIFORM.

The dress uniform shall be worn on all occasions of ceremony' weekly inspections, and musters, on all boards, and inspection duty.

Coat.—A frock coat of dark-blue cloth, faced with the same, and lined with black silk serge or farmer's satin; double-breasted, made to button to the neck and fastened there with hook and eye; two rows of large service buttons on the breast, nine in each row; the rows placed four and one-half to five and one-half inches apart from eye to eye at top, and two and one-half inches at bottom; rolling collar; skirts to be full, beginning at the hip-bone and descending four-fifths of the distance to the knee, with two buttons at the waist behind and one near the bottom of each fold; cuffs to be closed without buttons, and from two and a half to three inches deep.

Trousers.—Same material as coat, and to have a strip of black silk braid one-half inch wide down outer seam. When shoulder knots are worn the braid on trousers shall be of gold lace one-half inch wide.

Waistcoat.—Dark-blue cloth, single-breasted, with collar, cut high in front, with seven small service buttons, the upper one to be not more than four inches below the collar button in the neckband of the shirt.

Coat, Trousers, and Waistcoat for dress uniform shall be of the shade of color known as navy blue.

SPECIAL DRESS (Optional).

Coat.—Shall be a body coat (evening dress) of dark-blue cloth, faced with the same, lined with black silk serge, double-breasted, cut to

the figure, with rolling collar and three large service buttons on each breast, two at the waist behind and one near the bottom of each fold. Sleeve ornaments the same as for dress uniforms, with corps device embroidered in gold one inch in diameter, and placed one and one-half inches above upper band of lace.

Shoulder Ornaments are not to be worn. This coat should always be worn open.

Trousers.—Same material as coat, and to have a strip of gold lace one-half inch wide down the outer seams.

Waistcoat.—Same material as coat and trousers, single-breasted, rolling collar, cut to open low in front, with four small service buttons. This suit to be worn on social occasions only.

SERVICE UNIFORM—UNDRESS.

The Service Uniform—Undress.—Shall be worn by all officers while on ordinary duty at hospitals; and in the dispensary at the custom-house, if required by the medical officer in command of the station.

Coat.—To be made of dark-blue cloth or serge, shaped to the figure to fall as low as the upper joint of the thumb when the arm is hanging naturally by the side; a slit over each hip extending five inches from the bottom of the coat; single-breasted, with a “fly” front, fitted with plain flat black gutta-percha buttons, and a standing collar. The collar, edges of the coat, side seams of the back from the shoulder to the lowest edge of the skirt, and the edges of the hip slits to five inches from the bottom of coat, shall be trimmed with black lustrous mohair braid one inch and one-fourth wide, laid on flat; in addition to which, at a distance of one-eighth of an inch (with an overhand turn three-eighths of an inch in diameter at each change of direction) shall be placed a narrow black mohair soutache braid one-eighth of an inch wide. On each side of the collar shall be embroidered one inch in width, in high relief, the corps device in gold. The grade mark on the sleeves shall be a double thickness of lustrous braid showing the same width and disposition as that of the gold lace worn on the dress uniform coat. In warm weather a similar coat, made of white material, trimmed with white braid, but without collar devices, may be worn. The service coat, undress, shall be worn entirely buttoned. Pockets shall be on the inside of the coat. (See cut No. 7.)

Trousers.—Same material as coat, and to have a black silk braid one-half of an inch wide down the outer seams.

Waistcoat.—Same material as coat, same cut and number of buttons as in the dress uniform.

CRAVAT, COLLAR, SHOES, AND GLOVES.

Cravat.—Black ribbed silk, not more than thirty-six nor less than thirty-two inches long, and not more than one and one-fourth inches

nor less than three-fourths of an inch wide, tied in a double bow-knot in front, with the white shirt collar showing above it.

Collar.—The shirt collar shall always be white, and a standing collar shall be worn. Exception may be made when wearing the social dress suit.

Boots and Shoes.—Shall be of black calfskin or patent leather. In warm weather, low shoes with black hose may be worn.

Gloves.—Shall be of white Lisle thread, except for open service in cold weather, when wash leather (white) or heavy cotton may be worn. White kid gloves may be worn on occasions of special ceremony. Gloves shall always be worn with the sword.

OVERCOAT.

For medical officers the overcoat shall be made of dark-blue beaver (smooth-faced) lined with farmer's satin; the coat to extend from the chin to within twelve inches of the ground, double-breasted, closed up to the neck; rolling collar which when turned up will protect the ears, the coat to be closed in front by one small button at right side of neck beneath collar in corner of lapel, and four trefoils made of black mohair cord one-fourth of an inch in diameter, with frog according to pattern, to be spaced equally distant from throat to crotch and to be sewed to coat two inches from frog; and to have at the throat a loop of same cord sixteen inches long, with two knots and two slides, fastened on the left shoulder under the collar. An outside pocket on each breast, the opening of which shall run up and down, top of pocket to slant one and one-half inches forward, the lower edge of pocket to be level with the elbow; the rear of the coat to be opened by slit extending from the bottom to the crotch, and to be closed by fly and small black bone buttons, button holes to be worked on right side, so as to allow sword sling to pass through to clasp sword. Sword slit on left side placed two inches above and three inches below hips (five inches long) to allow sword to be worn outside coat.

Grade Marks on Sleeve.—(See cuts Nos. 10 and 11.) To be a cinquefoil, make of black lustrous braid, one-eighth of an inch in width. (See cuts Nos. 12 and 13.)

For Surgeon General.—Five bands in cinquefoil.

For Surgeon.—Four bands in cinquefoil.

For Passed Assistant Surgeon.—Three bands in cinquefoil.

For Assistant Surgeon.—Two bands in cinquefoil.

CHAPEAU, CAP, AND HELMET.

Chapeau.—*For Supervising Surgeon General.*—Folding pattern made of black silk plush, five to five and one-half inches on the left fan, four to four and one-half inches on the right fan, and fifteen to

seventeen inches from peak to peak, edges bound with gold lace two and one-half inches wide, showing one and one-fourth inches on each side and under the peaks, and to have on top between the folds two black ostrich feathers. In the folds at each end of the chapeau a gold tassel composed of five large and five small bullions, on the right fan a black watered silk cockade, three and three-fourths inches in diameter; over cockade a slash of two rows of gold wire lace one-half of an inch wide, forming a **V** at the bottom, and a large size M. H. S. button in the angle; the point of the slash shall touch the middle of the lower edge of the fan, and continue upward and forward at an angle of 35 degrees from the vertical.

For all other Commissioned Officers.—The same, substituting black silk lace (oak pattern) instead of gold on edges, and omitting feathers. The chapeau shall be worn on occasions of special ceremony.

Helmet.—The helmet shall be made of cork or other suitable material, the crown to measure (in the curve) from the lower edge of the outside band, below the strap buttons, to the center of the ventilator on the top of the crown not less than six nor more than six and three-fourths inches. The brim at the front shall not be less than two and one-fourth nor more than two and one-half inches wide, and shall diminish in width to one inch on each side at the middle of the crown; and at the back shall be three-eighths of an inch wider than that in front, and diminish to the same width on the sides as the front brim; the droop of the brim at the front shall not be less than 48 nor more than 56 degrees, at the back not less than 45 nor more than 48 degrees, and at the sides not less than 55 degrees. The covering of the helmet shall be light drab duck linen, with a band at the base of the crown of the same material, three-fourths of an inch wide, and stitched on each edge; one small M. H. S. button, detachable, in the band each side of the middle, and a light drab glazed chin strap in front five-eighths of an inch wide. The sweat band to be of uncolored morocco, with a ventilating space between it and the body of the crown; the brim to be lined with green alpaca or silk, and bound with light drab enameled leather; the crown not to be lined.

Cap.—Dark-blue cloth, diameter at top to be slightly less than at base; quarters not less than one and one-fourth or more than one and one-half inches wide; the seam around the top to be without a welt, and stitched on each side, band to be one and one-half inches wide, including a welt one-eighth inch at top and bottom. The bottom welt to be one-eighth of an inch from base of cap. A black lustrous mohair braid band shall be worn between the upper and lower welts. Visor to be made of black patent leather, molded to shape, and bound with the same. All visors shall be green underneath, and sloping downward, not less than 20 nor more than 30

degrees from the horizontal. Four eyelets to be inserted in quarters of cap, two in each side. Chin strap to be double loop of plain gold wire cord, one-fourth inch in diameter, fastened by small service button on each side. An oil-silk cover may be worn in foul weather. The cap ornament shall be the corps device embroidered in gold on the front of the cap, one inch in diameter, with its center over upper welt, and resting between two crossed laurel branches embroidered. (See cut No. 1.) In warm weather white linen or duck of same pattern may be worn with gold cord and small service button, but without service device.

EPAULETTES.

For Supervising Surgeon General.—To be of gold bullion, the strap two and one-half inches wide and six inches long; frog four and one-half inches wide; crescent one-half inch in broadest part, bullion three inches long, and three-eighths of an inch in diameter. In the frog shall be embroidered a five-pointed star, and on the strap the corps device in gold. Epaulettes shall be worn only by the Supervising Surgeon General.

SHOULDER KNOTS.

Shoulder Knots.—To be two rows of three-sixteenths of an inch gold wire cord, with a three-plait of gold thread cord of proportionate size between; to continue on the shoulder in form of a figure eight on a dark-blue ground. Small service button at top; and corps device embroidered in gold in center of pad, and insignia of rank on either side.

For Supervising Surgeon General.—A five-pointed gold star in center of pad, and in the center of lower loop of frog, corps device in gold. (See cut No. 8).

For Surgeon.—A gold leaf on either side of corps device. (See cut No. 9).

For Passed Assistant Surgeon.—Two gold bars on either side of corps device.

For Assistant Surgeon.—Same as Passed Assistant Surgeon, omitting one bar.

Shoulder knots to be worn only on occasions of special ceremony.

SHOULDER STRAPS.

Shoulder Straps.—To be embroidered rectangles in dead gold bullion four and one-half inches long, by one and one-half inches wide, including the border, outside edges one-fourth inch bullion, edged with twisted gold wire, the center to be of dark-blue cloth, upon which are to be embroidered the corps device in gold at each end and insignia of rank, as follows:

For Supervising Surgeon General.—A five-pointed gold star embroidered in dead gold in each end of strap.

For Surgeon.—The same as for Supervising Surgeon General, substituting gold leaves instead of stars.

For Passed Assistant Surgeon.—The same as for Surgeon, substituting two gold bars one-half inch long and one-fourth inch wide in place of leaves.

For Assistant Surgeon.—The same as for Passed Assistant Surgeons, omitting one bar.

Surgeons who have been in service twenty years, or who have been Supervising Surgeons General, shall substitute silver for gold leaves on shoulder knots, shoulder straps, and on collar of service coat.

COLLAR ORNAMENTS FOR SERVICE UNIFORM—UNDRESS.

Collar Ornaments for Service Uniform—Undress.—The grade distinction shall be placed three-fourths of an inch from the edge of the collar. The corps device shall be placed three-fourths of an inch in rear of the grade distinction.

For Supervising Surgeon General.—Gold embroidered corps device and five-pointed gold star.

Surgeon.—Gold embroidered corps device and gold leaf.

Passed Assistant Surgeon.—Gold embroidered corps device and two gold bars.

Assistant Surgeon.—Gold embroidered corps device and one gold bar.

GRADE MARK ON SLEEVES.

For Supervising Surgeon General.—Five bands of one-fourth inch gold wire lace around each sleeve; lower band two inches from lower edge of cuff; first four bands one-fourth inch apart; upper band one-half inch above fourth band.

For Surgeon.—The same as for Supervising Surgeon General, omitting one band.

For Passed Assistant Surgeon.—The same as for Surgeon, omitting one band.

For Assistant Surgeon.—The same as for Passed Assistant Surgeon, omitting one band.

BUTTONS.

Buttons.—Shall be gilt, convex, and of two sizes, large seven-eighths, and small nine-sixteenths of an inch in diameter. The device shall conform to pattern. (See cuts Nos. 2 and 3.)

DECORATIONS.

Medical officers and noncommissioned officers entitled to wear the decoration of the Order of Cincinnati, Sons of the Revolution, Sons of the American Revolution, Society of 1812, of the Colonial Society, Military Order of the Loyal Legion, or the Grand Army of the Republic, may wear such decoration with either uniform prescribed.

SWORD AND SWORD BELT.

Sword for all Commissioned Officers.—Blade to be straight, of diamond shape, twenty-nine to thirty-two inches long, "U. S. Marine Hospital Service" to be etched on the right side. Hilt, pommel inverted frustum of a cone with corps device chased on one side. and star on the other. Grip, white sharkskin wrapped with gilt wire. Front guard to bear corps device; spring back guard, with trophy device. Black leather scabbard with gilt bands, a five-pointed star on each; upper band to have two rings. Tip to be five inches long with laurel branch engraved on the right side. (See cut No. 6).

Sword Knot.—Shall be a strap of one-half of an inch gold lace, twenty-four inches long, with slide and tassel.

Service Sword Belt for all Commissioned Officers.—Shall be a waist belt of black grain leather two inches wide with sling straps of same, three-fourths inch wide; with a hook attached to the belt to hang the sword. The sword-belt clasp shall be of gilt, and circular, two inches in diameter, having a raised bright rim with laurel wreath incircling the corps device of the service. The letters "U. S." at the top and "M. H. S." at bottom of clasp. (See cut No. 4.)

Dress Sword Belt for all Commissioned Officers.—Gold wire vellum and dark-blue silk woven lace two inches wide, gold strips on the upper and lower edge, dark blue in the center, all of equal width. Slings to be three-fourths of an inch in width, to have one-fourth of an inch gold lace strips on each edge, silk strips in center, to be lined with black morocco or enameled leather. Clasp the same as on service belt.

Sash for Supervising Surgeon General.—To be of buff silk and gold thread with silk bullion fringe ends; sash to go twice around the waist, and to be tied behind the left hip; pendent portion not to extend more than eighteen inches below hip.

The sword belt shall be worn over the dress uniform coats with the lower edge of the belt placed above the two lower buttons in front, and the two at the waist behind. The short sling strap shall be immediately in the rear of left hip, and the long sling strap in the center of the back, between the buttons. The dress belt shall be worn only on occasions of special ceremony, and with the shoulder knots. When the sword is hooked up, the ring on the front edge of the scabbard shall be used so that the hilt may be on the rear of the hook, and the sword point inclined to the front. The sword shall be worn with the dress uniform on occasions of ceremony, weekly inspections, and musters, but shall not be worn in the hospital wards.

ACTING ASSISTANT SURGEONS.

Acting Assistant Surgeons.—May wear similar uniform to that prescribed for Assistant Surgeons, omitting one band on sleeves and all bars on shoulder straps of dress uniform; and omitting all grade

device on service uniform. Acting Assistant Surgeons on duty at quarantine stations shall wear the prescribed uniform of their grade.

INTERNES.

Internes.—To wear the same uniform as Acting Assistant Surgeons, omitting shoulder straps.

UNIFORM FOR HOSPITAL STEWARDS.

Dress Uniform Coat.—Double-breasted sack coat of dark blue-flannel, or blue cloth, shaped to the figure, to fall as low as the upper joint of the thumb when arm hangs naturally at the side, with two rows of large service buttons on the breast, five buttons in each row at equal distance, rolling collar, and one band of one-fourth inch gold lace around each sleeve two inches from lower edge of cuff, with no pockets on outside of coat.

Ornaments for Dress Uniform.—Steward of first class, gold embroidered corps device one inch diameter on each lapel. Steward of second class substitute silver embroidered corps device. Steward of third class substitute corps device embroidered in red silk.

All hospital stewards for each five years' service shall wear a band of sky-blue silk braid one-fourth of an inch wide around each sleeve, and one-half of an inch above the gold band now prescribed. Each subsequent band to be one-half of an inch apart.

Trousers.—Same material as coat, with welt down the outer seam.

Waistcoat.—Same material as coat and trousers, waistcoat to be without collar and to button with seven small service buttons.

Cap.—Same as officers' cap, substituting for service device the letters "M. H. S." in old English, embroidered in silver, five-eighths of an inch in height, resting between two gold embroidered laurel branches; chin strap of gold wire cord.

Service Uniform.—Same as officers', without braid or device, and to button with several large service buttons instead of fly front with concealed buttons. A caduceus for stewards of the first class shall be embroidered in dead gold bullion, two and one-half inches in length, upon each sleeve, midway between elbow and shoulder, with a five-pointed gold star three-fourths of an inch in diameter one inch above the top of the caduceus.

Stewards of the Second Class.—The same as stewards of the first class, except the caduceus and star to be embroidered in silver.

Stewards of the Third Class.—The same, except the star and caduceus to be embroidered in red silk.

Trousers and Waistcoat.—Same as dress uniform.

Cap.—Same as in dress uniform.

Overcoat.—For steward the overcoat may be an ulster of dark-blue cloth (smooth-faced), lined with heavy farmer's satin, the bottom of

the skirt nine to twelve inches from the ground, double-breasted, made to button to the neck, with rolling collar of the same material as the coat, and broad enough when turned up to protect the ears; seven plain flat black gutta-percha buttons on each front, one and one-fourth inches in diameter, the lower buttons to be placed as low as the knee, the others to be equally spaced up to the throat; an outside pocket in each breast, the openings to be up and down, and the lower part of the opening to be level with the elbow. A belt two and three-fourths inches wide, of the same material as the coat, to be worn through loops placed above each hip, and to be fastened in front with buttons similar to those on the coat.

The overcoat, if worn, should be entirely buttoned; but its use is optional.

FOR HOSPITAL ATTENDANTS.

Coat.—Single-breasted sack coat, dark-blue flannel, with rolling collar, to button high in neck, cut square at bottom, with five large service buttons and a red felt cloth Geneva cross one and one-fourth inches square upon outer face of each sleeve, equidistant from shoulder and elbow.

Waistcoat and Trousers.—Same material; waistcoat without collar, to have seven small service buttons.

Working Suits.—Nurses while on duty in wards may wear white duck jackets.

Attendants in kitchen, dining room, and laundry to wear white jackets and aprons.

Attendants detailed as firemen, scrubbers, and gardeners may wear when at work blue jumpers and overalls for the protection of their clothing.

Cap.—Dark-blue cloth, diameter at top same as at base; quarters not less than one and one-fourth nor more than one and one-half inches wide in front, sloping gradually, and to be not less than one inch nor more than one and one-fourth inches wide at back of cap; the seam around the top to be without a welt, and stitched on each side, band to be one and one-half inches wide, including welt one-eighth of an inch at top and bottom; bottom welt to be one-eighth of an inch from base of cap. A lustrous mohair black braid band will be worn between the upper and lower welts. Visor to be straight and made of black patent leather, not less than one and one-half nor more than one and three-fourths inches in front, and rounded. The cap front is to be not less than two and three-fourths nor more than three and one-fourth inches in height, according to size; four eyelets to be inserted in quarters of cap, two in each side, for ventilation. Chin strap for cap to be fastened by small service button on each side and to be of black patent leather, but without device or laurel branches. A white duck cap, same pattern, may be worn in the summer when ordered by the medical officer in command.

Cap for Engineer.—The same, with silver block letters "M. H. S." one-half of an inch high in front of cap.

Ornaments for Engineer.—The engineer shall wear on each sleeve a chevron of red felt cloth, the Geneva cross in interior angle, arms of chevron one and three-fourth inches long, to be of three bars one thirty-second of an inch apart. (See cut No. 14.)

QUARANTINE SERVICE.

MEDICAL OFFICERS.

Medical officers and acting assistant surgeons of the U. S. Marine Hospital Service serving at quarantine stations will observe the same regulations in regard to uniforms as apply to those at regular stations of the Service.

QUARANTINE EMPLOYÉS.

ENGINEERS AND PILOTS.

Dress Coat.—Engineers and pilots shall wear dark-blue cloth or flannel, double-breasted, with five large service buttons on each side.

Service Coat.—Same as officers, with one strip of black silk braid on sleeve, but with no corps device.

Trousers and Waistcoat.—To be made of the same material as coat, waistcoat to be cut double-breasted and to have seven small service buttons.

Overcoat.—The overcoat may be an ulster of dark-blue cloth (smooth-faced), lined with heavy farmer's satin, the bottom of the skirt nine to twelve inches from the ground, double-breasted, made to button to the neck, with rolling collar of the same material as the coat, and broad enough when turned up to protect the ear; seven plain flat black gutta-percha buttons on each front, one and one-fourth inches in diameter, the lower buttons to be placed as low as the knee, the others to be equally spaced up to the throat; an outside pocket in breast, the openings to be up and down, and the lower part of the opening to be level with the elbow. A belt two and three-fourths inches wide, of the same material as the coat, to be worn through loops placed above each hip, and to be fastened in front with buttons similar to those on the coat.

The overcoat, if worn, should be entirely buttoned; but its use is optional.

Cap.—Same as officers, substituting in silver block letters, one-half of an inch high, the letters "M. H. S.," for corps device; and without lauler branches. Chin strap of gold wire cord.

Ornaments.—The pilot shall wear on each sleeve a chevron of red felt cloth with steering wheel one and one-fourth inches in diameter, in red silk in interior angle, arms of chevron one and three-fourths

inches long, to be of three bars one-thirty-second of an inch apart. (See cut No. 15.) The engineer shall wear on each sleeve a chevron of red felt cloth with propeller wheel, one and one-fourth inches in diameter, in red silk in interior angle, arms of chevron one and three-fourth inches long, to be of three bars one-thirty-second of an inch apart. (See cut No. 16.)

SEAMEN.

Petty officers, ordinary seamen, firemen, coal passers, stewards, cooks, and boys shall wear blue cloth jackets and trousers, or blue woolen frocks; caps, blue cloth, without visor; cap bands to be of black ribbon one-half of an inch wide, with the letters "U. S. QUARANTINE" on them in yellow or gilt.

In warm weather the uniform may consist of linen or duck frocks, and blue or white trousers, blue cloth caps with or without covers, white sennit hats, or white duck caps, as the commanding officer may direct, with bands as prescribed above; black silk handkerchiefs, and shoes or boots properly cleaned. The outside of collars of all frocks for petty officers, seamen, and boys will be made of or covered with blue dungaree or blue nankeen. The collar to be uniform in size, seven inches deep, with square corners, with a white embroidered five-pointed star one inch in diameter in each corner; one row of tape to be stitched round the collar below the star, and the collar to be neatly stitched with white thread. The shoulder pieces of shirts to be doubled; the same to be overlapped and double stitched, the rows of stitching to be one-half of an inch apart. The breast of the shirt to be of double thickness, four inches wide on each side, to be neatly stitched with white thread, two rows of stitching one-half of an inch apart. The opening in front of the shirt shall extend downward from the collar ten inches, neatly stitched and strengthened at the point where the opening ends. Three tape ties on each side at equal distances apart; ties to be twelve inches long.

Trousers are to be made with broad flaps, to button one and three-fourths inches from the top.

Working Suits.—White duck jumper and overalls.

Rain Suits.—Hat, coat, and trousers of oiled unbleached cotton-duck of "Cape Ann" pattern. Rubber boots.

ILLUSTRATIONS.

Large.



3/4 inch.
No. 2.

Small.

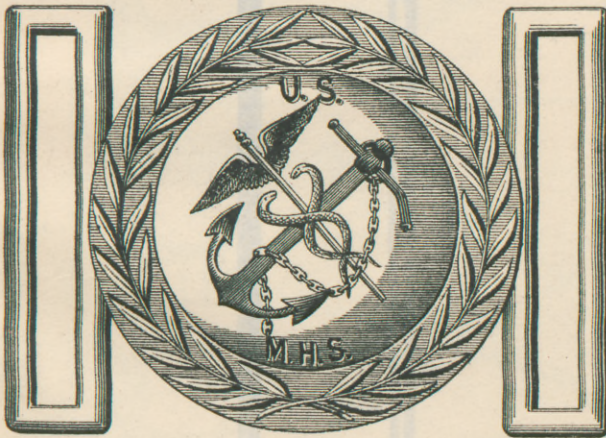


3/4 inch.
No. 3.

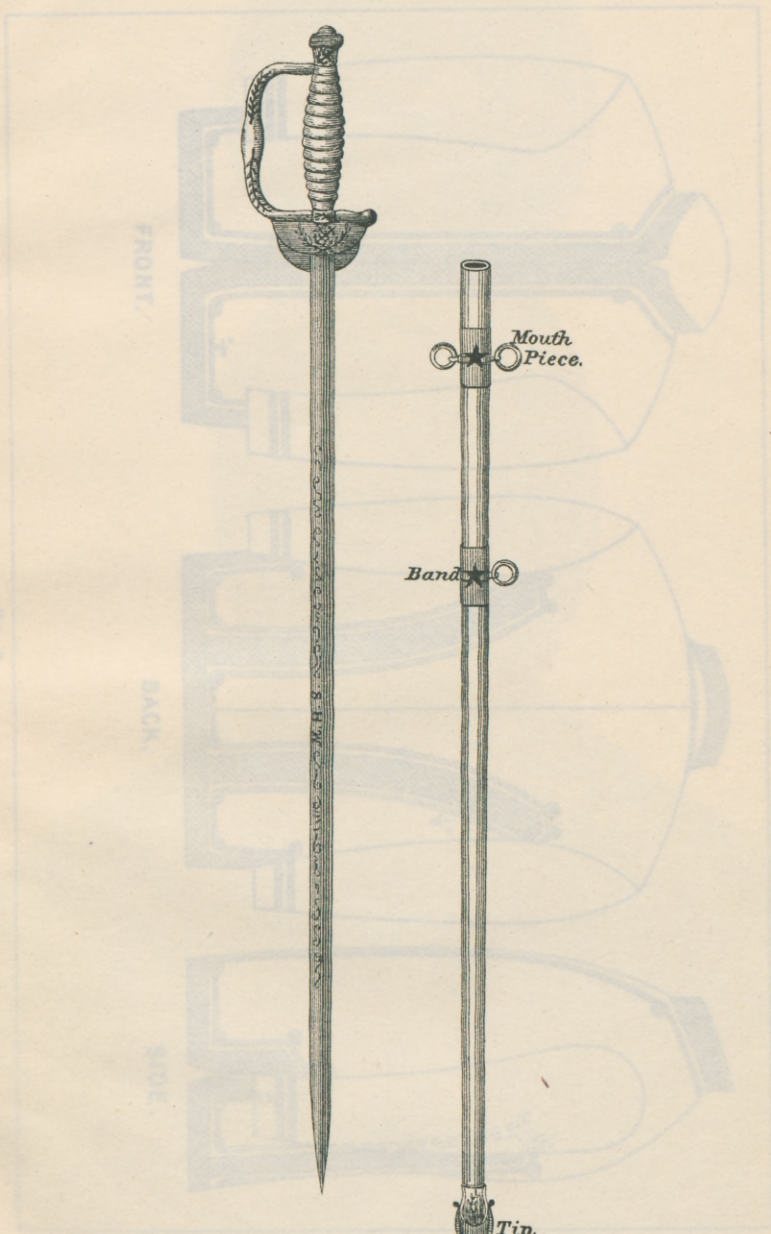
Corps Device and Laurel Branches



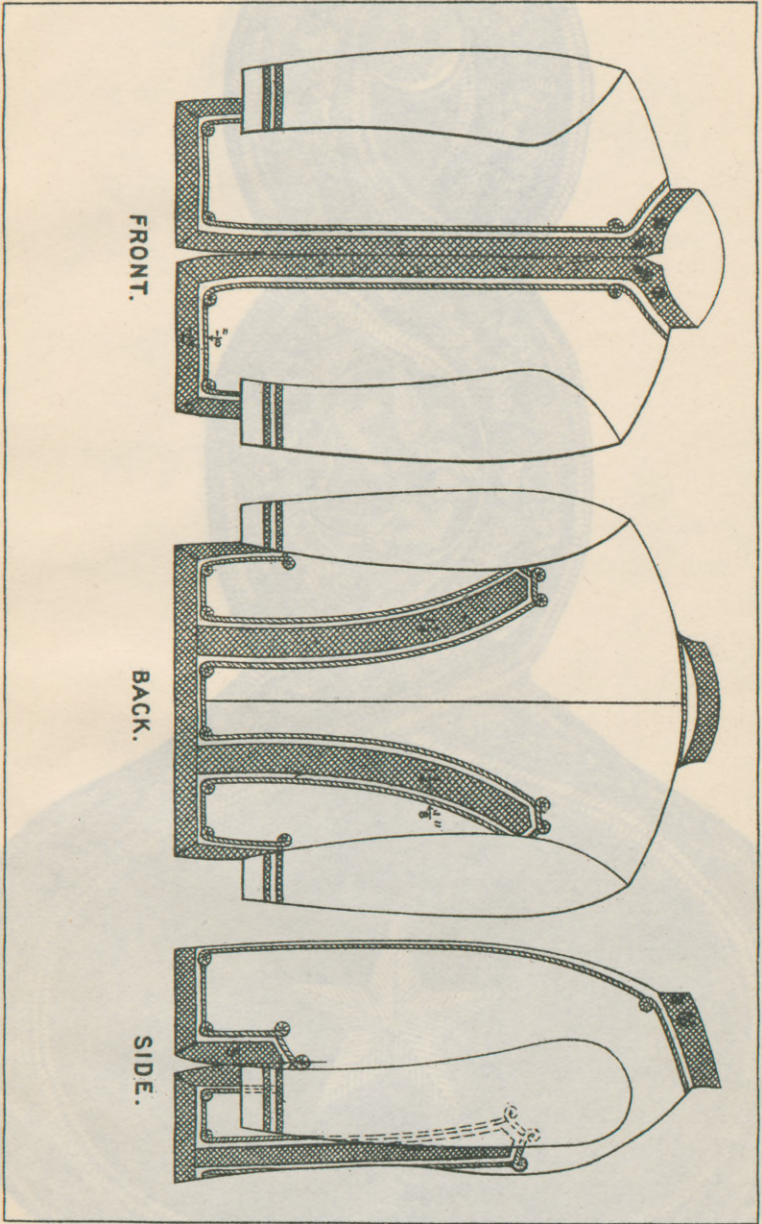
No. 1.



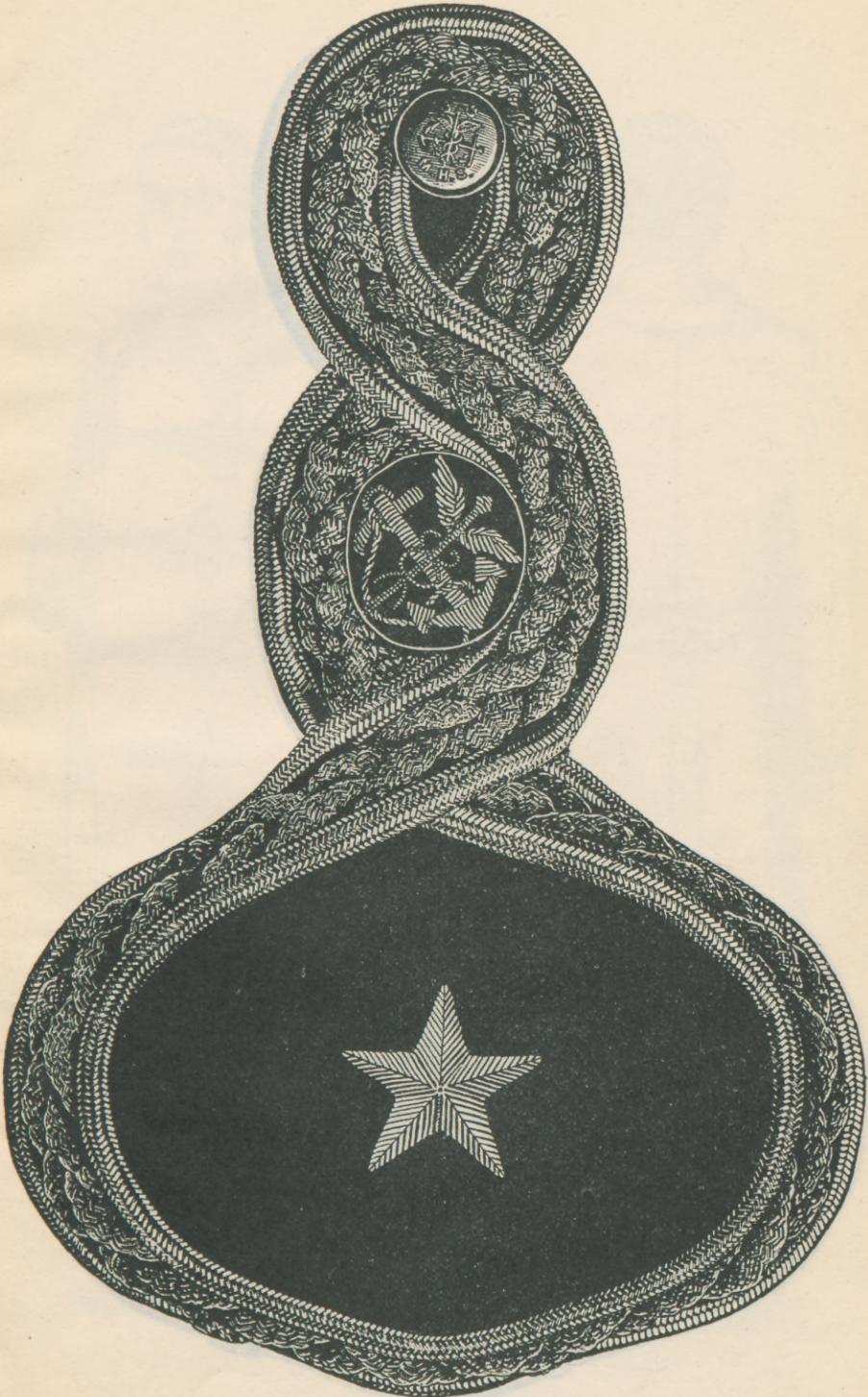
No. 4.



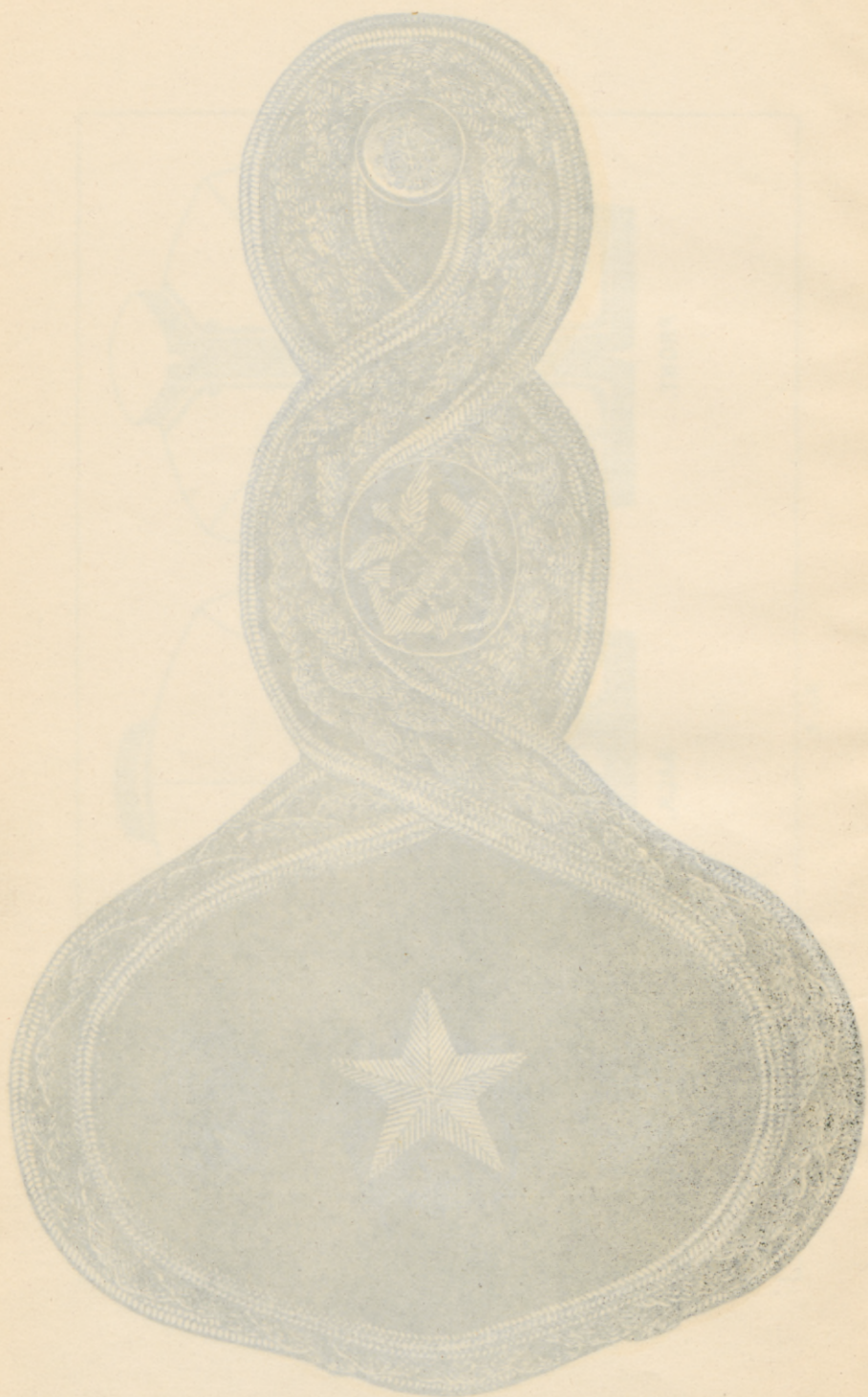
No. 6.

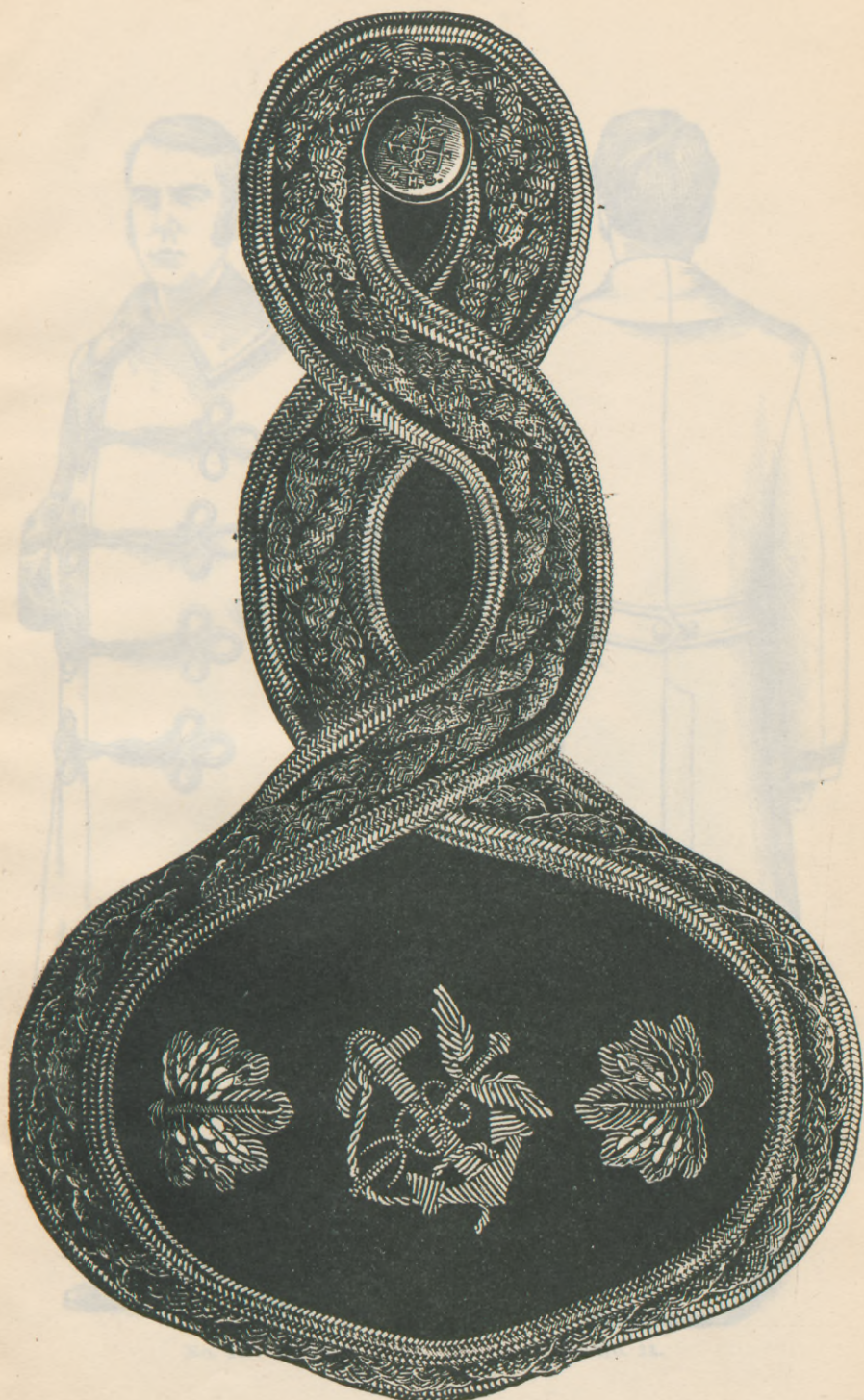


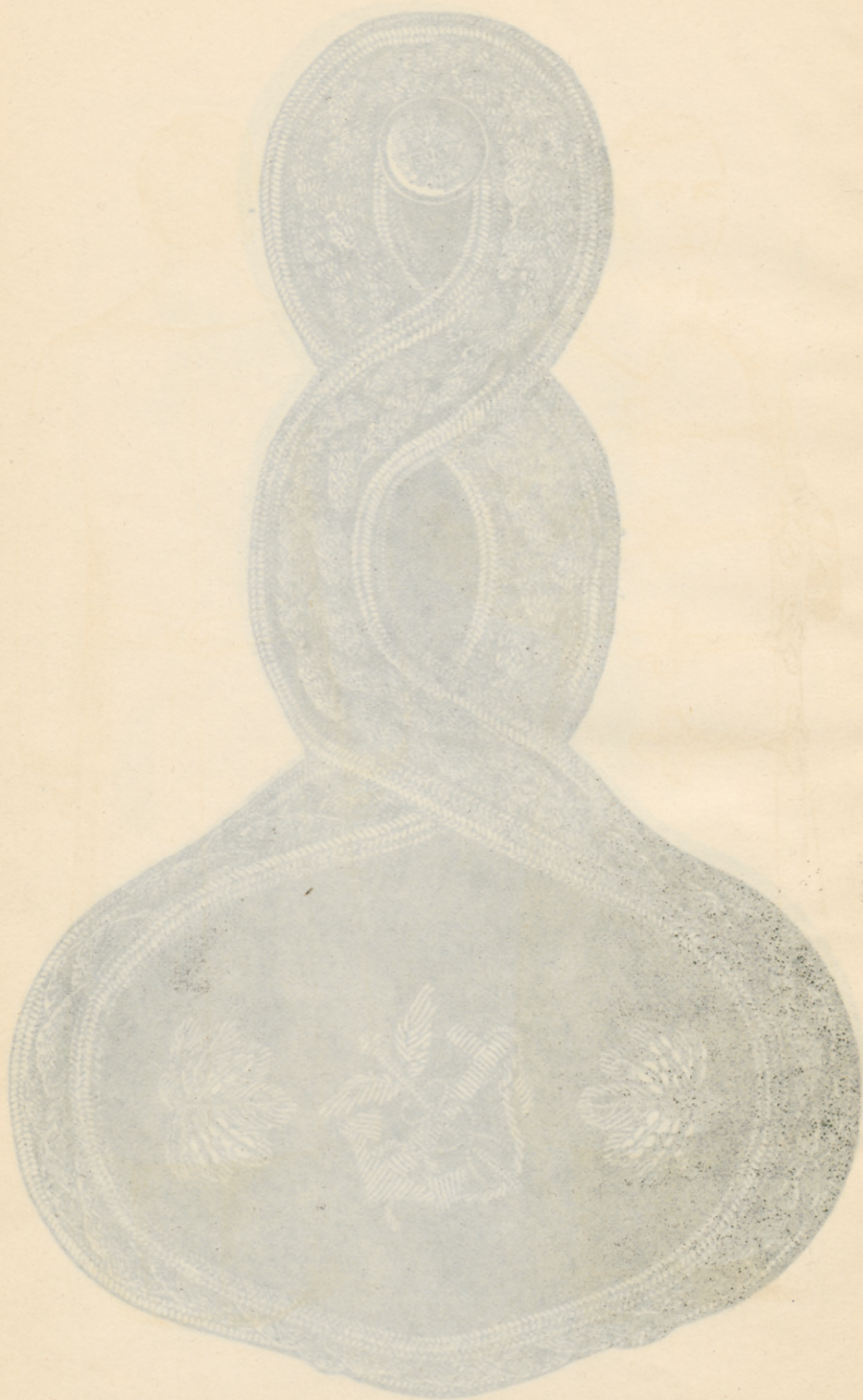
No. 7.

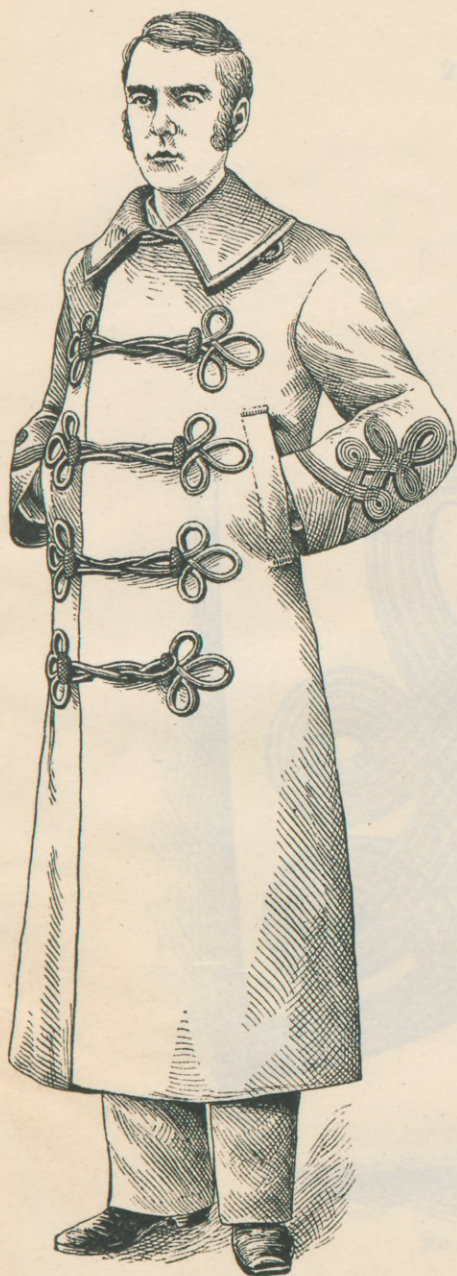


No. 8.

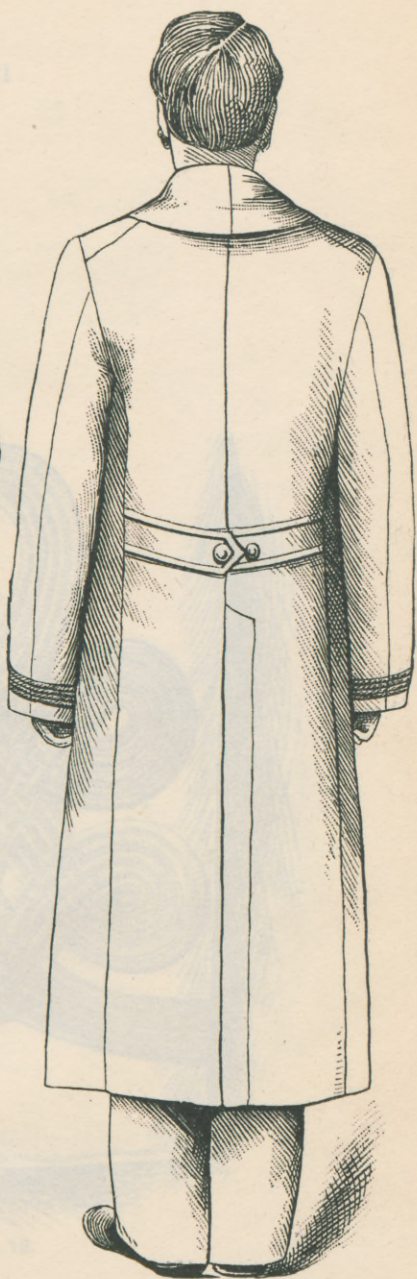




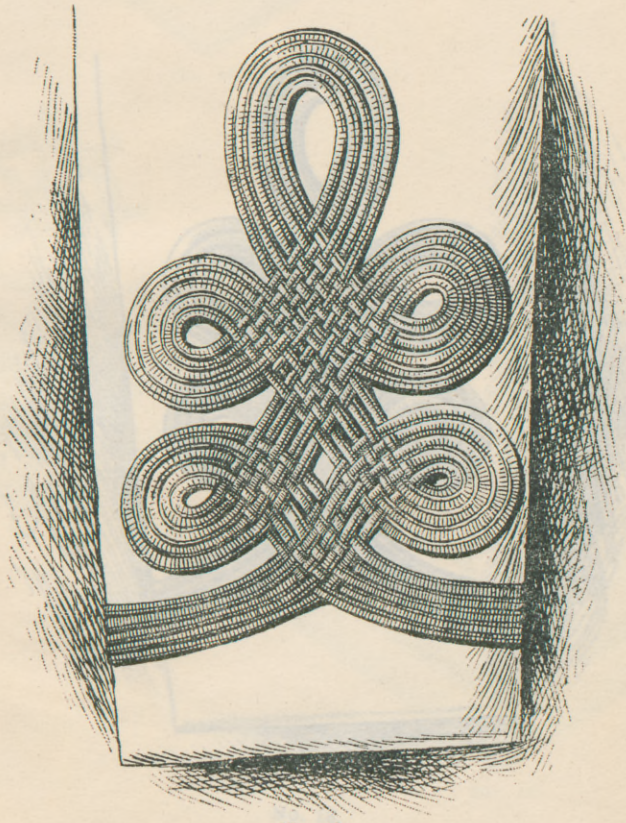




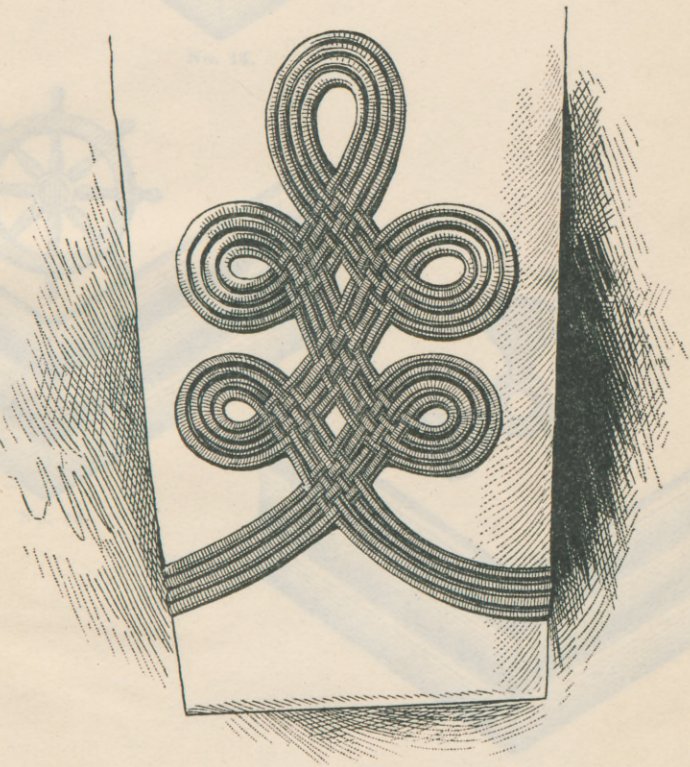
No. 10.



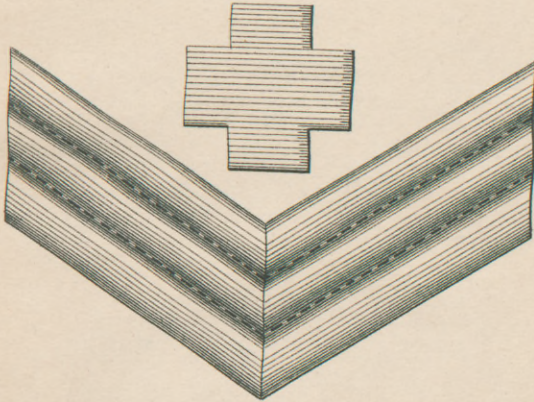
No. 11.



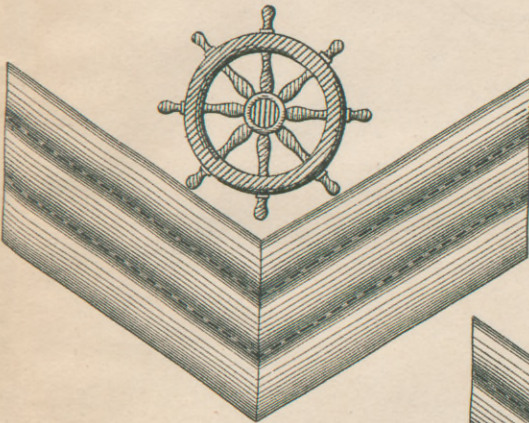
No. 12.



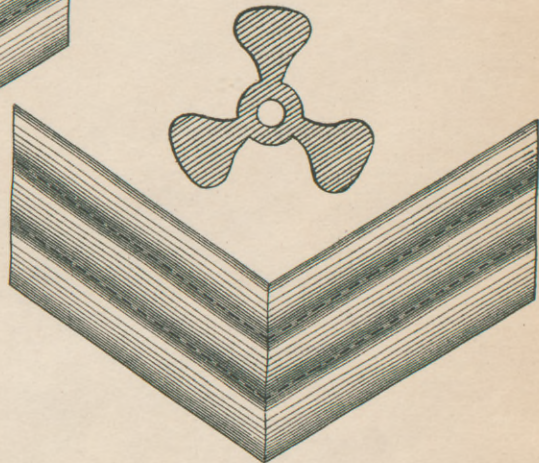
No. 18.



No. 14.



No. 15.



No. 16.

DATE DUE

NIH LIB APR 23 1973

GAYLORD

PRINTED IN U.S.A.

NIH LIBRARY



50

4 0115 2115

MM LIBRARY



3 1496 00180 6390