

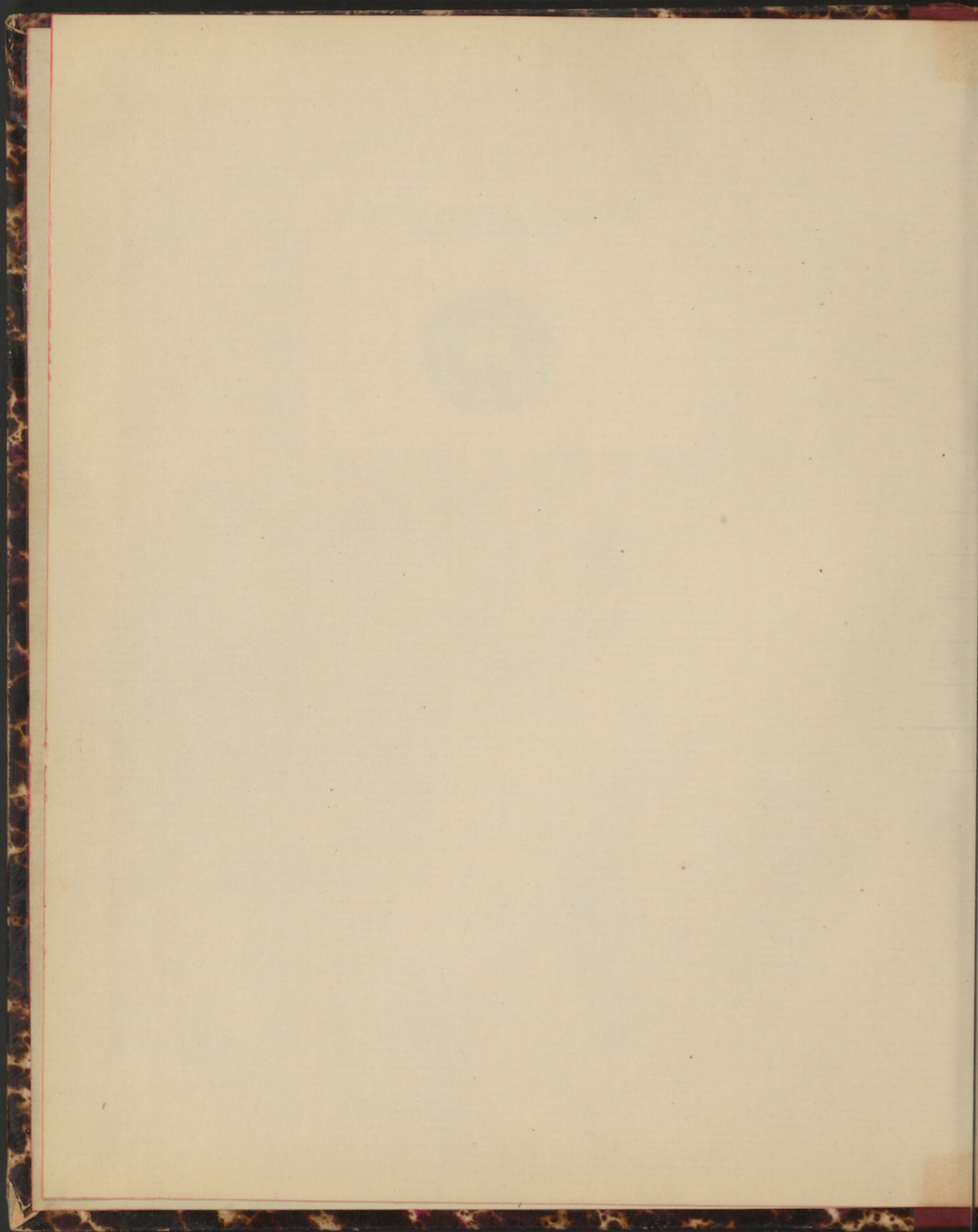


NATIONAL LIBRARY OF MEDICINE  
Bethesda, Maryland



Chorea crisp a pleurisy but may a pneumonia.

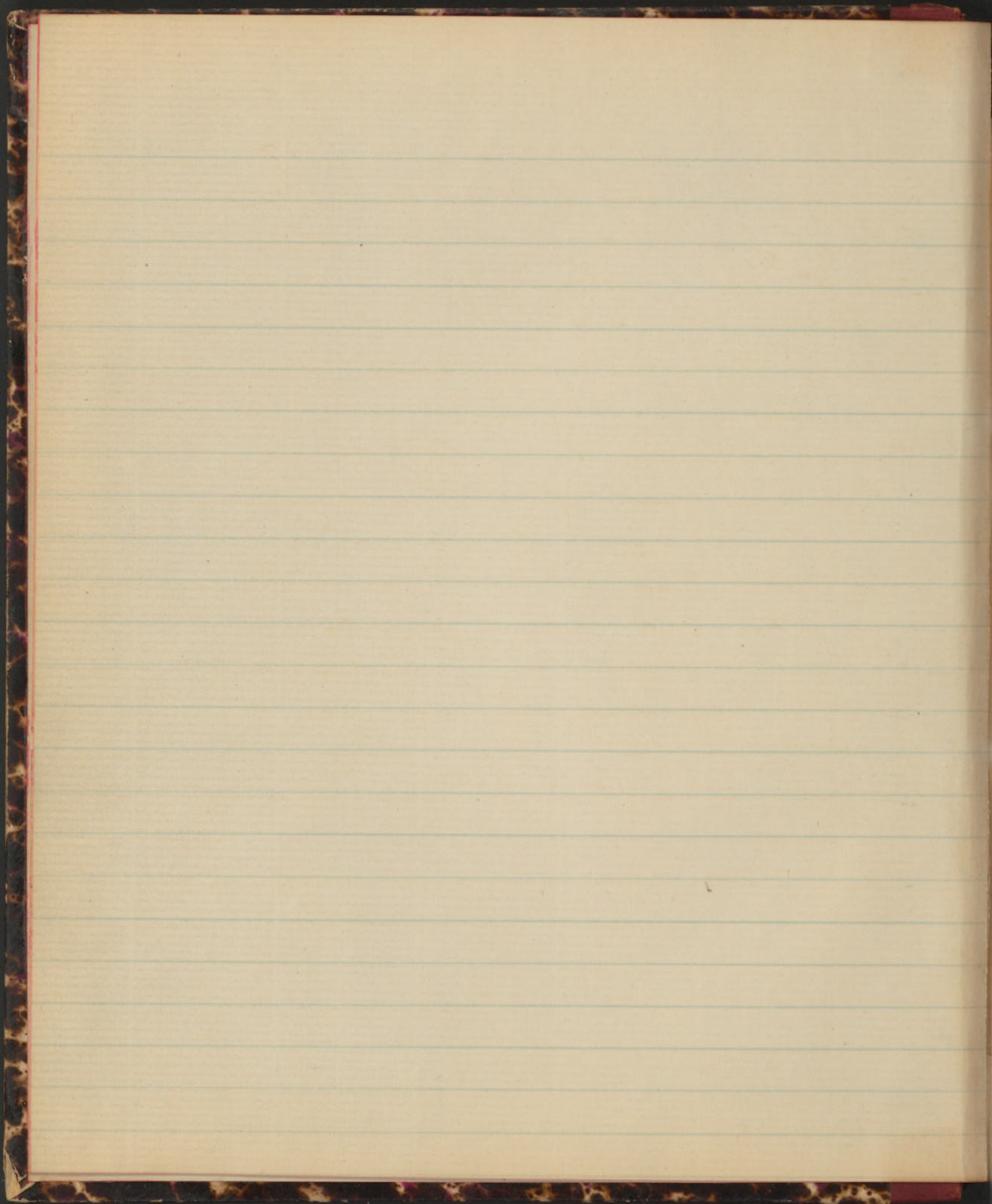






5







Blisters is more slow and more permanent than rubefacient and produces more structural change.

Rubefacient is more rapid and more general in action - used in congestions and nerve irritations. - Rubefacients go deeper than blisters if left on for a long time.

Counter-irritation - (Mar. 17. 1888.

Amnesia may follow from decayed tooth.

Paraplegia from renal calculus.

Duodenal ulcer from a burn.

It occurs through the trophic nerves.

Irritation to be placed directly over an organ as it has a relation with the surface directly over it.

Both aural for the eye.

Anstie's Law - put counter-irritation over the root of nerve supplying the painful part.

Sets of Counter-irritants - 3.

I Rubefacients - cause dermatitis but with no organic change.

II Epi-epi-irritants - Has organic change and blisters.

III Those causing structural change but no blisters as Cotton oil or Antimony.

Seton acts in same way

Issur also

Caustic likewise.

If you wish to affect an organ



having organic change, you must cause organic change on surface

For congestion and irritations rub-  
efacients to be used: as in lungs  
or bowels.

Peritonitis requires structural changes  
for counter-irritation.

For Blistering - (Escharotics - vesica-  
-toris, produce inflammation of skin  
& outflowing of serum known as blister)

Cantharis - Cantharides <sup>Spanish Fly (Beetle)</sup>

Active principle is cantharidin

Tinct. is used internally dose ʒt

Overdose of the fly internally causes  
burning pains and soon vomiting of  
mucus & <sup>green</sup> specks of fly, then bloody,  
then shortly diarrhoea not serous  
then mucous and bloody, with ten-  
-esmus and small, sometimes et  
once we have collapse; in a few  
hours a 2nd set of symptoms come  
on as pains in loins, pain in blad-  
-der, & frequent desire to mictur-  
-ate and symptoms of cystitis,  
and even strangury.



Take it off 1 or 2 hrs before it has drawn + then put on the poultice to draw.

and <sup>(aphrodisiac)</sup> erotic excitement, from small dose, from larger dose we may get swelling and sloughing of the scrotum & death from exhaustion with coma. Death is from local action at the points of entrance & escape.

Treatment of poisoning - Wash out stomach and intestine with de-mulcent drinks <sup>but no oils</sup> + cathartics & give Opium. - or even anaesthetics - <sup>leeches to epigastrium.</sup>

Write for plaster thus.

On adhesive plaster with a free uncovered edge.

R

Unguentum cantharidis q. s.

℞ unguentum  $\frac{v}{j}$  X III unguentum

If absorbed the cantharides may cause strangury, to avoid this only keep on the plaster a brief <sup>(early removal)</sup> time, and thus <sup>also</sup> the <sup>hair</sup> suffering will be far less, - 5 or 6 hrs contact is enough, followed by flexion or bread and milk poultice for 5 or 6 hrs more, after the blister is raised clip it with scissors and then may cover with ointment.

Charitelo



To keep it from healing use Basilicon ointment (Cerat. Resinat)

For Strangury - Opium per rectum + Hot bath. <sup>epigastrium</sup> leeches to  
for Nervous irritation - On typhoid fever convulsions send weak by applying to Scaph.  
by D. T., but there is danger of scalp sore

To heal it quickly use Bonlards  
~~extract~~ ointment. - Or use simple  
cerate. If slow to heal use Oint  
Zinci or Oint Iodoform.

Blisters is much useful for serous  
inflammation than that of organs.

- only in advanced stage of pneum.  
monia, - Often good in catarrhal  
pneumonia & capillary bronchitis.  
Blisters are more useful in later than in early stages of inflammation.

Rubefacients - Plaster

- Poultice

- Liquids or liniments.

Liniments used for chronic rheu-  
-matism, or after exertion, but not  
as efficient as they are popular.

No specific action in any one lini-  
ments.

May use Aqua Ammon fortior  
with Ol olivum, may add Ol  
Turbinth, and Oil of Sassafras.

Cantharidal collodium (Collodi-  
um cum cantharide) is too powerful  
for using.



Turpentine stupor - In typhoid fever  
- In Amenorrhoea with Dovers &c.

Aqua Ammon under watch crystal.

As Plaster.

Picea. Pix Burgundica - <sup>+</sup> (as Plaster for)

Warming plaster = Emplest. Piceis cum  
Cantharidis will blister 3 out of 6  
persons - they act slowly & for  
days; - for moral comfort. - In  
chronic bronchitis <sup>of old persons</sup> of service

<sup>+</sup> (Pix Canadensis es Emp Piceis Canaden)

- In nervous pain of women for prolonged mild effect.

Sinapis - Mustard

Is more valuable

1. Sinapis nigra - <sup>acts in 10 min</sup> black mustard is more  
powerful, of equal parts with flour.

2. Sinapis alba - <sup>acts in 15 min</sup> white or yellow mus-  
tard. <sup>Mustard is a soothing persistent plaster - use it</sup>  
<sup>not too strong so as to keep it on longer.</sup>

Mustard plaster for  $\frac{1}{2}$  hr, to blister  
there is more pain and harder to  
heel them from cantharides.

- And in intense internal irritation,  
no good in collapse and apoplexy  
and as there is no sensibility here  
it may be left on too long - In  
internal irritations the next



1 Part Black mustard + 2 parts flour. kept on 20 min.  
or Equal parts of yellow mustard & flour mixed with water.

day after after using the plaster a  
furious dermatitis may appear <sup>by reaction</sup>.

The mustard leaves of the drug  
shops are abominations.

By diluted with flour & ~~new~~ molasses it checks  
its rapid action.

Spices :- for steady & continuous mild influence.  
- in enteritis :- May use tincture of the spices  
on cloth & cover with oiled silk.

Escharotics are drugs used to  
destroy diseased or sound tissue.

Pain is the difficulty but creosote  
now prevents this, as in chancere  
before using nitric acid.

Bitrate of filure is powerful but  
does not go deep.

Acid nitrate of Mercury acts a-  
bout as nitric acid, applied on  
splinters or glass rod, arrest their  
action with soapy water.

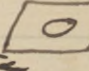
Chronic acid is powerful, for  
epidermal growths especially, as  
warts venereal or not by placing  
a crystal on it & then wash off with  $H_2O$ .



Bromine is most powerful - use glass rod - acts on dead and living tissue alike, used for Hospital gangrene but is too uncontrol-  
lable for organic growths.

Sulphuric acid may also be used.

Corrosive sublimate - is most dangerous from its absorption.

Potash or Potasse cum calce (Vienna paste) - it takes up the water, acts on the fat, oxidizes the fibres - for small masses - is too uncontrollable - penetrates deeply - used to make an issue - apply by making a hole in a piece of sticking plaster  + cover the edges with <sup>cerate</sup> oil, ap-  
ply the caustic for 10 or 15 min then mark with vinegar

The Vienna paste does not run as the Potasse does.

Luzi Chlorid - better as Canguoin's paste, & making arrows to thrust



around base of tumor.

Peridum arseniosum - (As<sub>2</sub>O<sub>3</sub>) basis of  
quack remedies. Cancer tissue is  
more readily destroyed than sound  
tissue - pain is atrocious, but es-  
-cains checks this - It may be  
absorbed but by using large a-  
-mounts this danger is less  
as the tissues die so quickly.

Anthelmintics Mar 22, 1888.

Worms - I Ascaridis - Leaf worms.

II Lumbricoid - Round worms.

III Taeniae - Tape worms.

I. For Leaf worms first wash out the  
rectum by injection of salt water,  
and follow this by an injection of  
Sassaia  $\frac{3j}{ij}$  in Oij boiled down to  $\frac{Oj}{ij}$ .  
inject this last slowly and hold it  
as long as possible.

Vinegar has also been used.



Spigelia - Pinkroot

Exh fluid dose  $\mathfrak{f}\mathfrak{z}$

Exh Spigeliae et Sumac fl. (not officinal any more) has aromatics in it, good for children. adult dose  $\mathfrak{f}\mathfrak{z}$  - 2yr child  $\mathfrak{f}\mathfrak{z}\mathfrak{s}\mathfrak{s}\mathfrak{i}$  every 4 hrs till it purges.

Symptoms of Overdose of Spigelia - (much as a mydriatic - dilated pupil, heart acceleration, heat & dry skin, delirium.

It probably contains Spigeline which is a cardiac depressant.

Spigelia narcotizes the round worms hence in 1 hr afterwards follow with castor oil.

Azedgrach

Decoction ( $\mathfrak{z}\mathfrak{i}\mathfrak{j}$  to  $\mathfrak{O}\mathfrak{j}\mathfrak{s}$  boiled to  $\mathfrak{O}\mathfrak{j}$ )  
dose tabley spoonful every 2 or 3 hrs  
till bowels are affected.

Chenopodium - Moinsud

Oil is to be used - dose in capsules  
or on sugar  $\mathfrak{gtt}$  x to 3yr child every 3 hrs.



## Santonin

Levank wormseed contains Santonin also called Santoninic acid & can form salts.

Santonates are freely soluble.

Santonin is insoluble.

Action - First symptom is often yellow vision (ganthopsia) due to staining the humors yellow, and urine is red looking from the santonin <sup>& its derivatives</sup>, but not bloody, tremblings, vomiting but mostly not, and the symptoms are not those of gastro-enteritis, it exerts its power over the nerve centres, & with loss of consciousness & dilated pupil.

Summary 1. Ganthopsia. 2 Tremblings and muscular<sup>ly</sup> apathy & unconsciousness & epileptiform convulsions.

3. Colic.

Santonin has produced death - 6grs has killed strong adults: as it is insoluble the persons have often escaped.

Solubility is not wanted hence sodium santonate is not to be used.



but give the santonin itself in its crys-  
talline form (not pulverized)

Adult dose  $\text{gr } \text{ij} - \text{iv}$

Child, dose  $\text{gr } \frac{1}{4} - \frac{1}{2}$

follow it in 2 hrs with castor oil with  
a little turpentine added to it

Turpentine - dose of  $\text{f } \text{ʒ} \text{ij}$  always  
with twice its bulk of castor oil has  
been used for all worms.

III For taenia must have the intes-  
tine empty may give as follows

1. Supper to night, bread milk & tea.
2. Medicine at 7 tomorrow morning.
3. 1 hr later (8 A.M.) coffee
4. 3 hrs later little milk toast ( $\frac{1}{2}$  hr before  
2nd medicine = cathartic)

Repro. Pumpkin seed.  
Good mostly used for taenia.  
It must not be too old.

$\text{ʒ} \text{ij} - \text{ij}$  beaten up with sugar & arom-  
atic oil & taken as the breakfast



At 10 A.M. take 1 tablespoonful castor oil  
+ 1 teaspoonful turpentine, and  $\frac{1}{2}$  hr later  
may eat.

Be present at the delivery of the worm  
& if it comes down by giving a large  
rectal injection of salt water to  
bring the head along.

Aspidium - Filix Mas. - Male fern  
Chlorosis is alone to be used

It can produce fatal gastro-enteritis.  
- not safe to give over  $\mathcal{Z}\mathcal{ss}$  - J - after  
starving to

Brayera - Koosso

Has Risus Koosin (Tannin)

Good never used this

\* ( $\mathcal{Z}\mathcal{ss}$  powdered leaves suspended in wa-  
ter in the morning, or 20-40grs Koosin - It  
generally purges itself - care in pregnancy.)

Cathartic 2 or 3 hrs afterwards.

Pomegranate Rinds - Granatum.

Decoction of the fine twigs is better  
 $\mathcal{Z}\mathcal{ij}$  to  $\mathcal{V}\mathcal{ij}$  boiled to  $\mathcal{O}\mathcal{j}$ .

Alkaloids - Pelletierine } tannic acid  
- Isopelletierine }

3 more



French dose of alkaloid is gr  $\text{iv} - \text{vj}$ .

On animals it produces temporary mo-  
to paralysis of peripheral motor nerves  
as with curare

### Antacids

Drops to neutralize acidity of primæ viæ.  
(in Stomach or Intestines with con-  
stipation or diarrhoea)

In gastric acidity we have <sup>acid</sup> eructations,  
and may cause headache (with) coming  
on with blindness & sudden dizziness  
& <sup>early stomach symptoms</sup> is across the whole brow & rub on  
our spot as in neuralgic headache;  
for acid <sup>Remedy is to act immediately hence</sup> headache is common.  
Ria gr  $\text{xx} - \text{xxx}$  in Spirits or Spts. aromat.

Acidity is due more to fermenta-  
tion than to perverted secretion.

### Sodium

Soda bicarbonati acts on Stomach  
and Urin but not on general system.

Preparation - 1. - Carbonate

2. - Bicarbonate is less  
irritant - given in soda mint.

For Burns when no cuticle is



Lime water not given for vomiting of acute gastritis

destroyed part on a part of the Bicarb  
it does good apparently by breaking up  
the mucus or thrombi of the bowels.

It dissolves uric acid hence used  
in gravel, but can not dissolve any  
formed calculus, hence to only <sup>make</sup>  
the urine alkali use Soda Bicarb. <sup>or XX-XX t.d.</sup>  
but to purify the system use Potass

Lime. - Calc. - 2 forms. 1. Caustic Lime.  
2. Aq. Calcis.

Aq calcis (lime water) prevents coagulation  
of milk in stomach hence good  
for delicate stomachs as in milk punch  
add table spoonful or more.

It is stringent and sedative to  
mucous membrane, has solubility pow-  
er on mucus, used for gastric ir-  
ritation especially with milk as for  
puerperal vomiting 1 part to 3 of milk  
up to 6 of milk, in small doses of the  
mixture at first as f3ss.

In vomiting lime water alone is good.

In laryngitis (early) lime water is



atomizer every hour is best remedy.  
In children with nose stuffed shut  
with <sup>thick</sup> mucus it dissolves it.

In Diphtheria lime water has no power.  
\* (Syrup Calci dose  $\text{fʒj}-\text{ʒj}$ ) <sup>Linnæus's Calci</sup>  
<sub>= Carrom oil for burns.</sub>

Chalk - 1. Cretæ Prep.  
2. Calci Carbon. Precipit.

Both these forms of chalk act alike.  
Slowly acting antacids. - well given  
internally as British Cretæ ( $\text{ʒvxxx}$  to  $\text{ʒʒj}$ ) dose  
is  $\text{ʒʒss}-\text{ʒj}$ . - it is also feebly stringent,  
and as dessicant in powder form, and  
acts as protective, good for diarrhoeas  
of irritation, and also in those of re-  
-laxation. (from acidity as in summer)

In intertrigo, feels sweating & as dessi-  
cant & protective  
(Oyster Shell in Castillon powder for summer diarrhoea)  
Dose Carbonati  $\text{ʒvxx}-\text{ʒj}$

Saccharin.

Prepared from coal tar.

Is 250 times as sweet as Sugar.

It escapes unchanged from the urine  
and makes it sweet & antiseptic.

It has no physiological action on



the animal organism and does not af-  
fect the nutrition of patients.

Uses. - In diabetes to sweeten the food.

In obese persons.

It is insoluble in water but is sol-  
uble in glycerine.

Disinfectants - Mar. 24 1888.

To destroy noxious micrometa.

Good divided poisons in 2 classes.

1. Micrometa

2. Contagious.

1. Micro is not a germ but is gaseous  
emanations but these can be infect-  
ed as with typhoid.

2. Contagion is a germ.

Filth may be in air, water, or solid.

The atmosphere can only be puri-  
fied by dispersion, not by bonfires &c  
as any agent that will kill the germ  
will kill man also.

Chlorinated lime in the sick rooms  
is no good it only covers the other  
odor by its own.

Severage can only be purified by



Germinicides kill live germs  
Antiseptics kill them in embryos & prevent their development.

① Dispersion & by ② oxidation.

Solid filth - can only be deleterious if moist, - dry earth of "cat style" is good  
liner will to keep barrel of  $\frac{1}{2}$  feet  
and  $\frac{1}{2}$  dry earth is with  $\frac{1}{4}$  part dry lime  
in country privy to throw down each  
time.

Lime (alkali) favors oxidation  
by forming ozone.

Lime in a privy brings up emanations  
of ammonia & other poisonous  
matters.

Mode of disposing of non-infected  
filth - I Dispersion  
II Dryness.  
III Lime.

Cleanliness of rooms as by washing  
is best - dispersion

You can not disinfect large masses  
in sewer or privy, hence destroy the  
first stool as it comes from the ty-  
phoid patient, - place the disin-  
fectant in the chamber bed pan  
before the patient uses it.



In infected filth you must use a germicide as ① Chlorinated lime, or ② Corrosive Sublimates or ③ Acid carbolie.

Chlorinated lime is the cheapest, 1 part to 100 of water destroys all forms of living organisms used either in solid but ~~in form~~ <sup>is better</sup> in liquid form, part 3 IV-V in form, <sup>before defecation.</sup> do not pour away the stools immediately after being discharged.

In using corrosive sublimates use it 1 to 500 of the stools, always kept in solution & colored with aniline or fuchsine.

Acid carbolie is effectual - 1 to 200 of the stools at least.

Sweetening of Closets and Pipes - use capparas (FeS<sub>2</sub>)

To disinfect sick room - wall paper had best be taken off and the walls and floor washed with H<sub>2</sub>Cl<sub>2</sub> 1 to 1000 followed by ordinary water.

Bedding had best be treated by fire or by boiling.

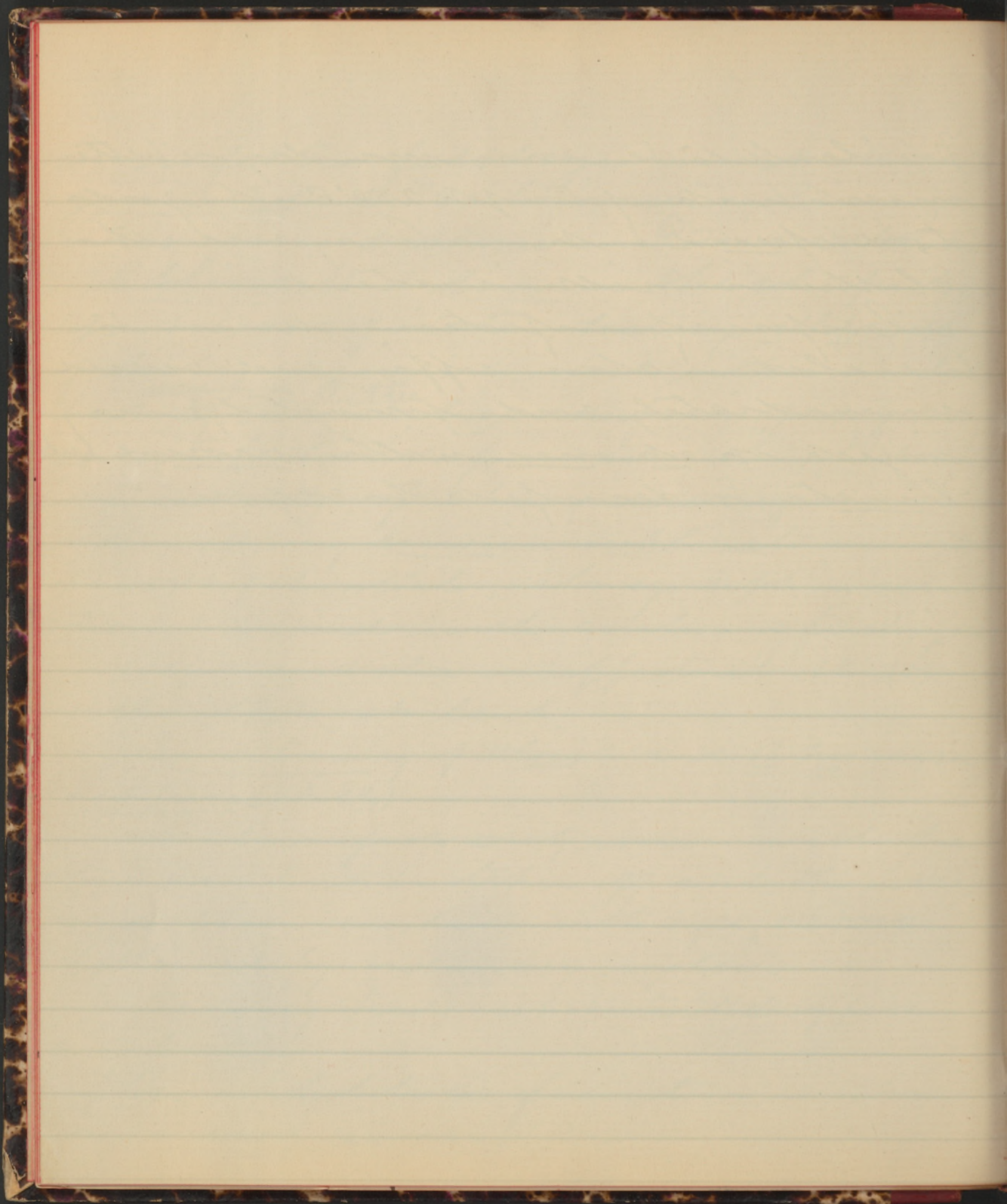
No upholstered furniture is to be in a sick room.



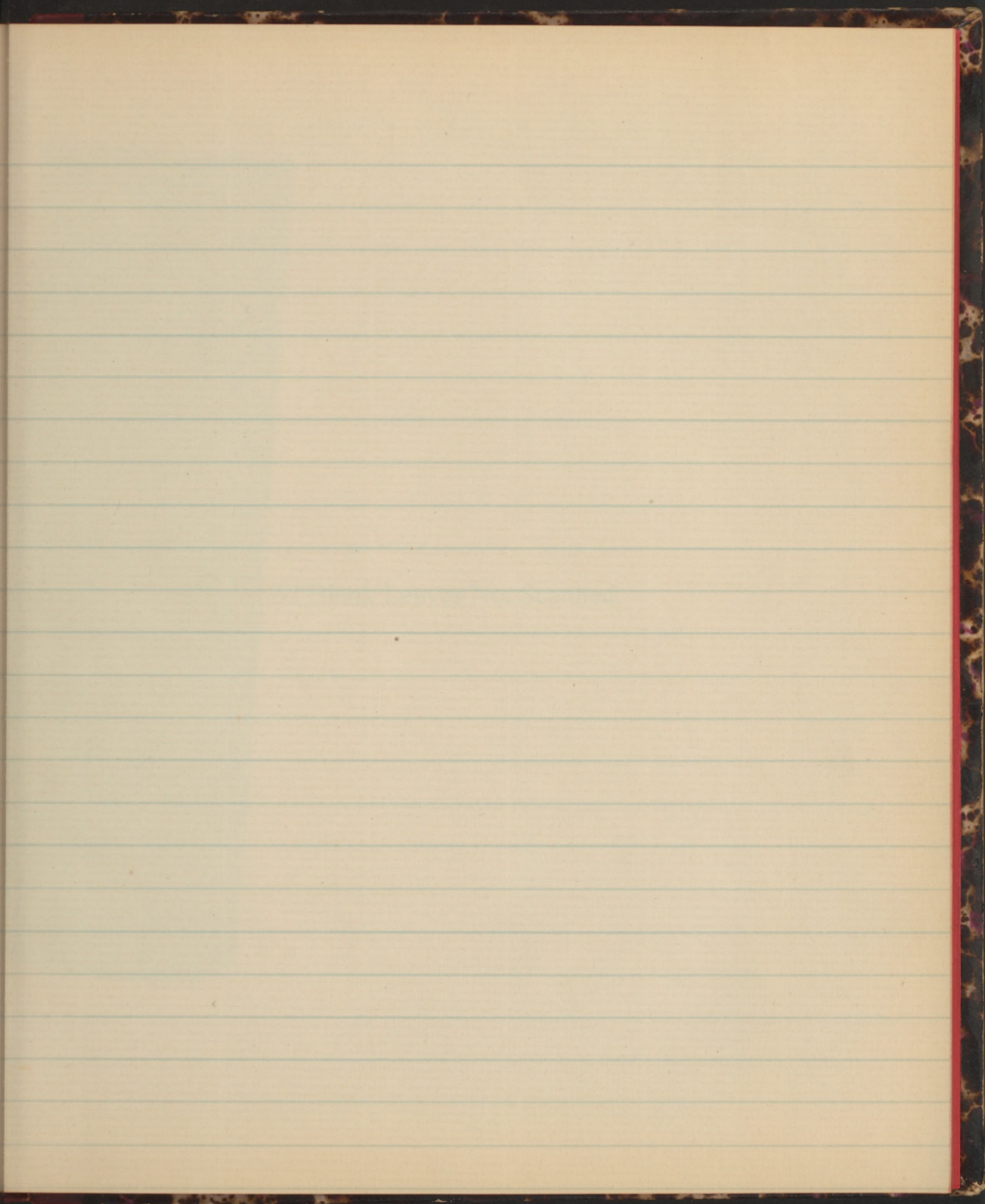
For blankets to be may use dry or better  
moist heat of temp<sup>re</sup> 250°F. - The goods  
to be spread out. - May boil the  
clothes in salt water.

Corpses of infectious disease to  
be sealed in close coffin and buried  
immediatly and privately: may  
inject in at once with corrosive sub-  
limate to disinfect the corpse.

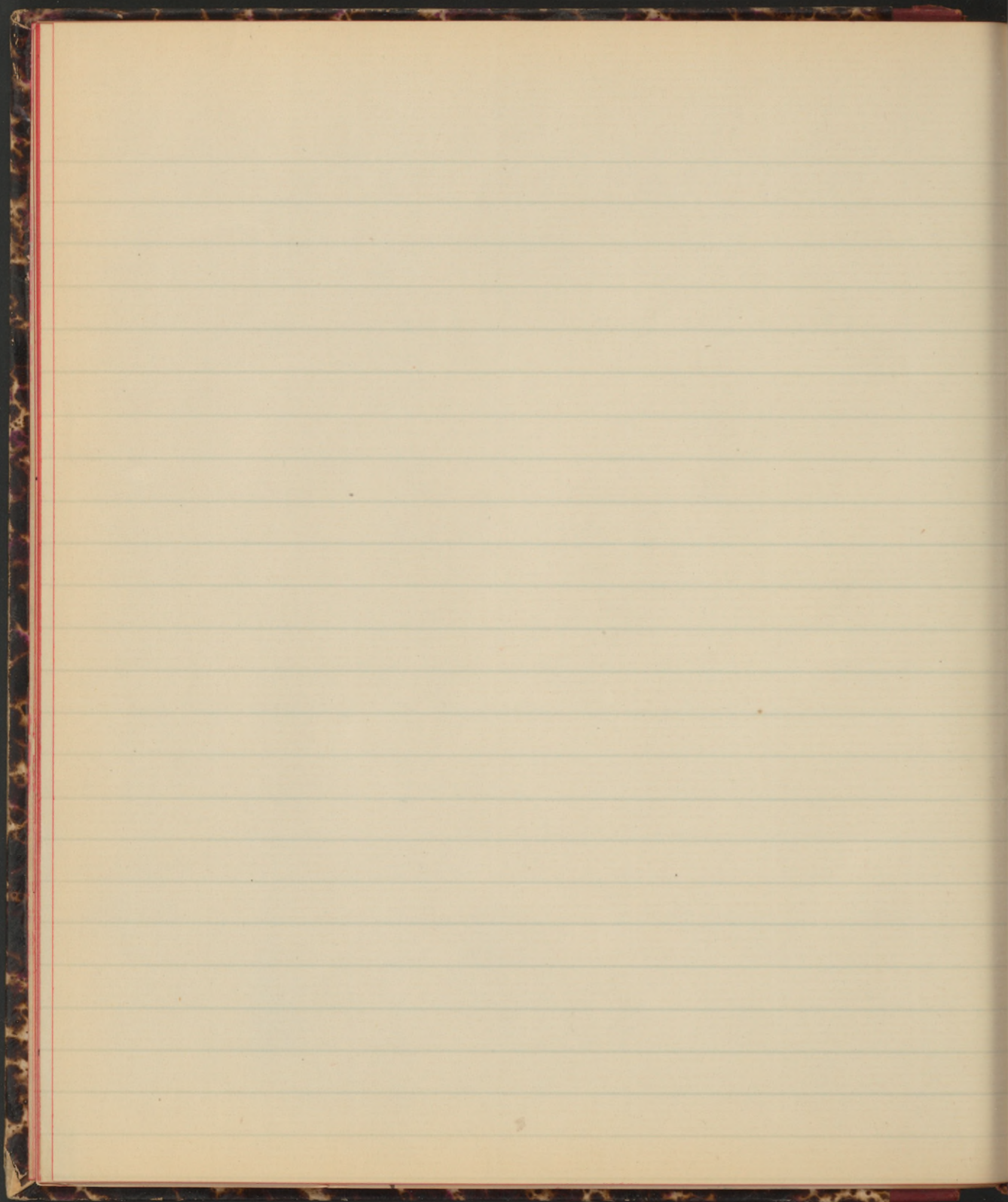








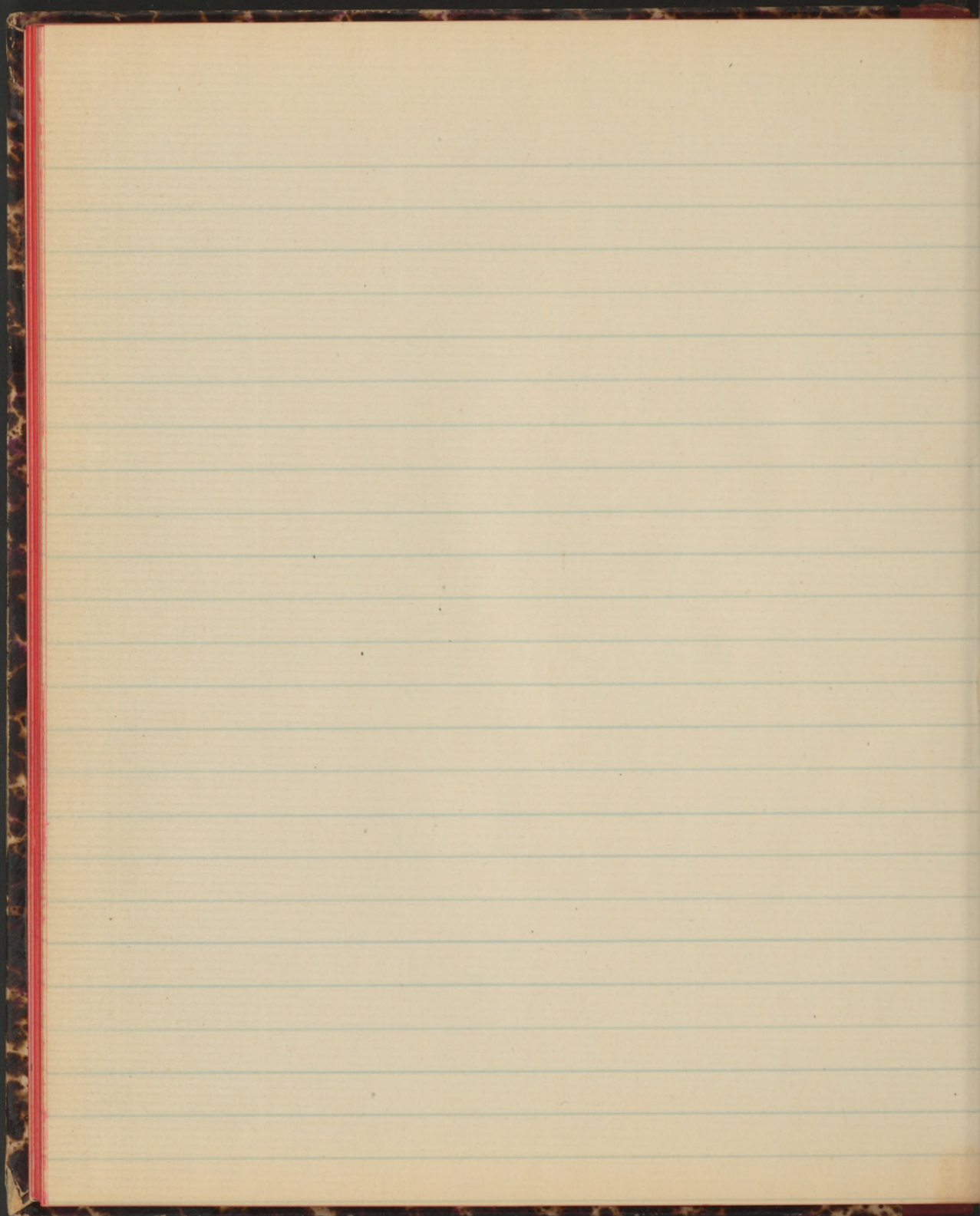




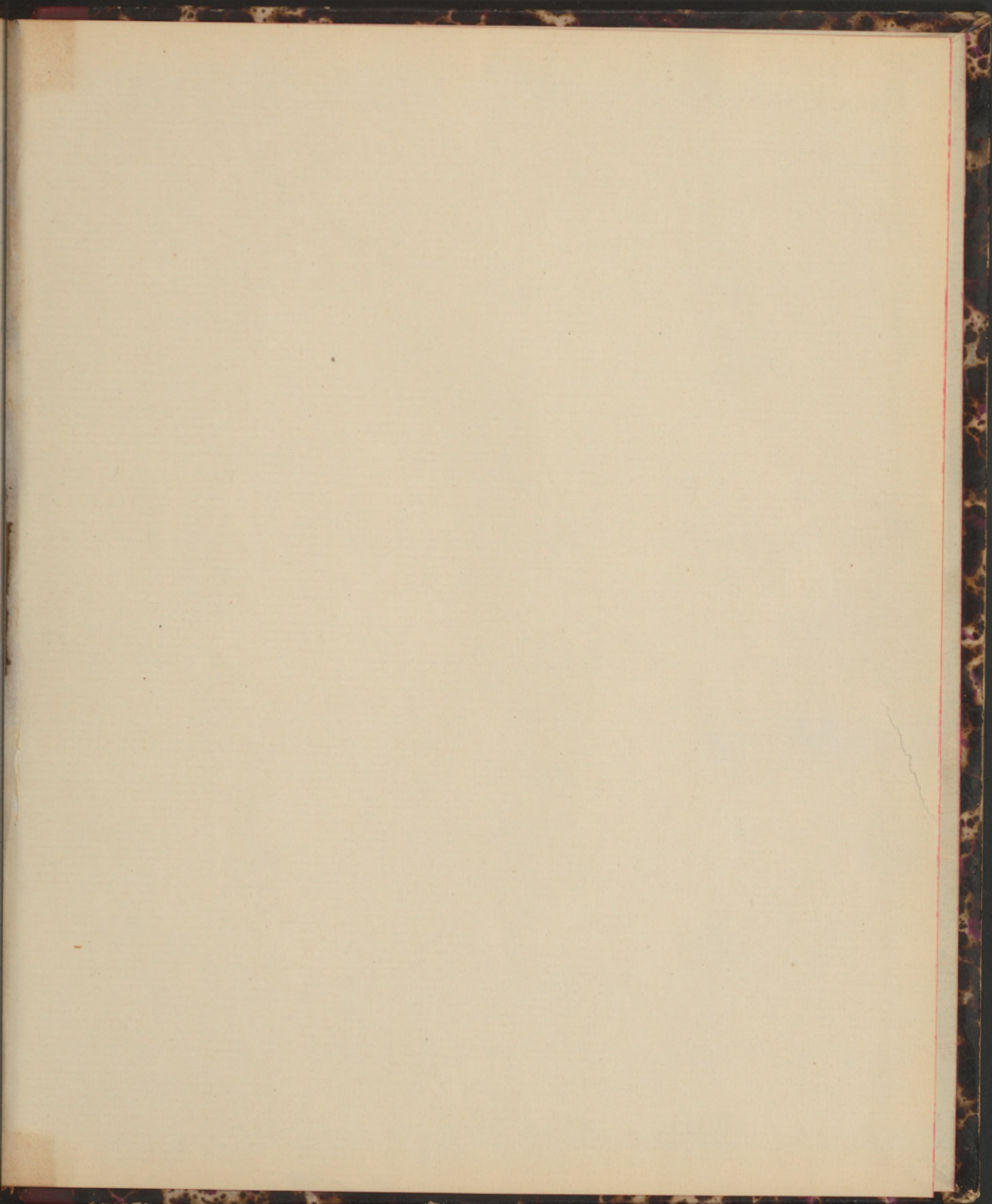


62 Blank Leaves Not Scanned

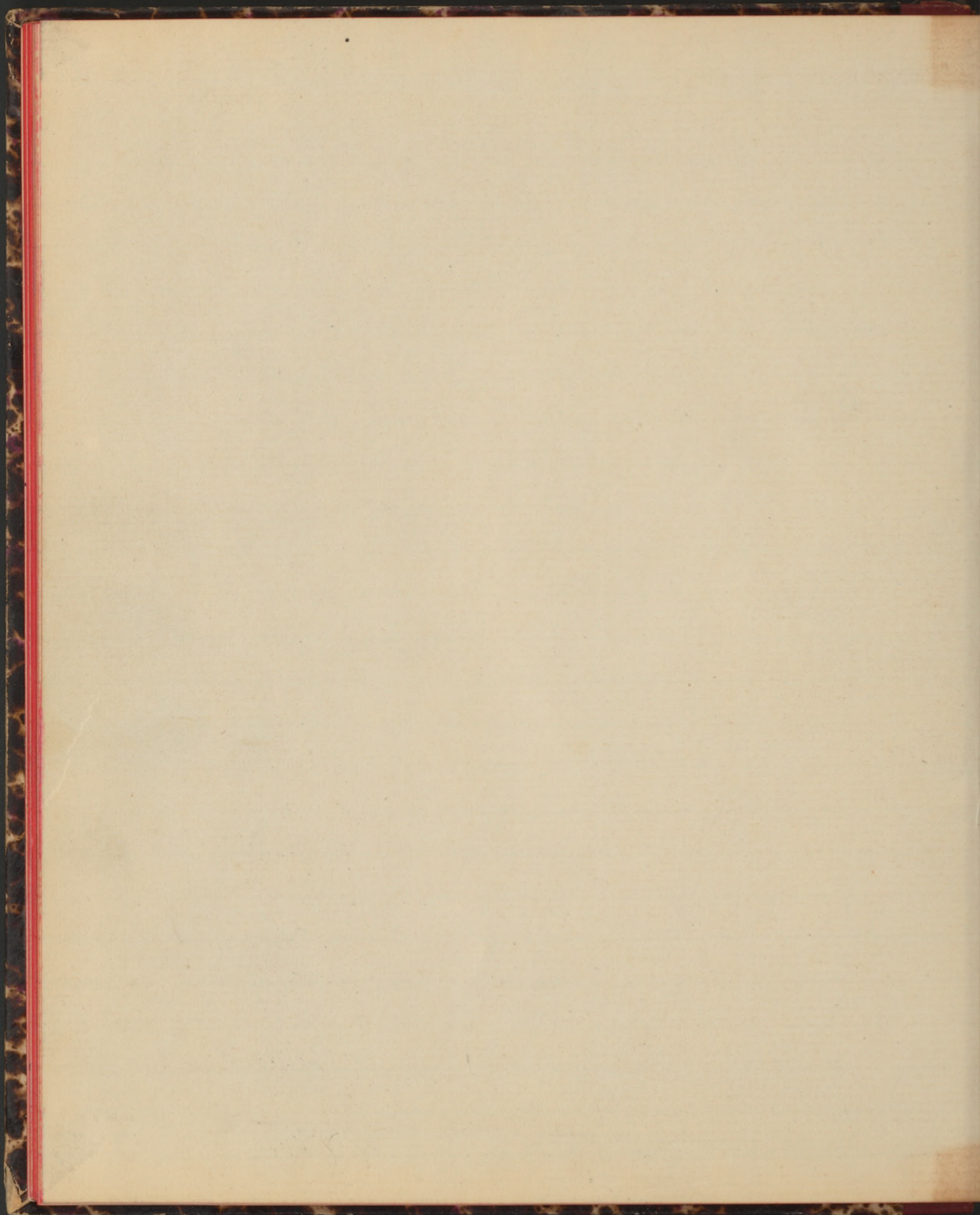




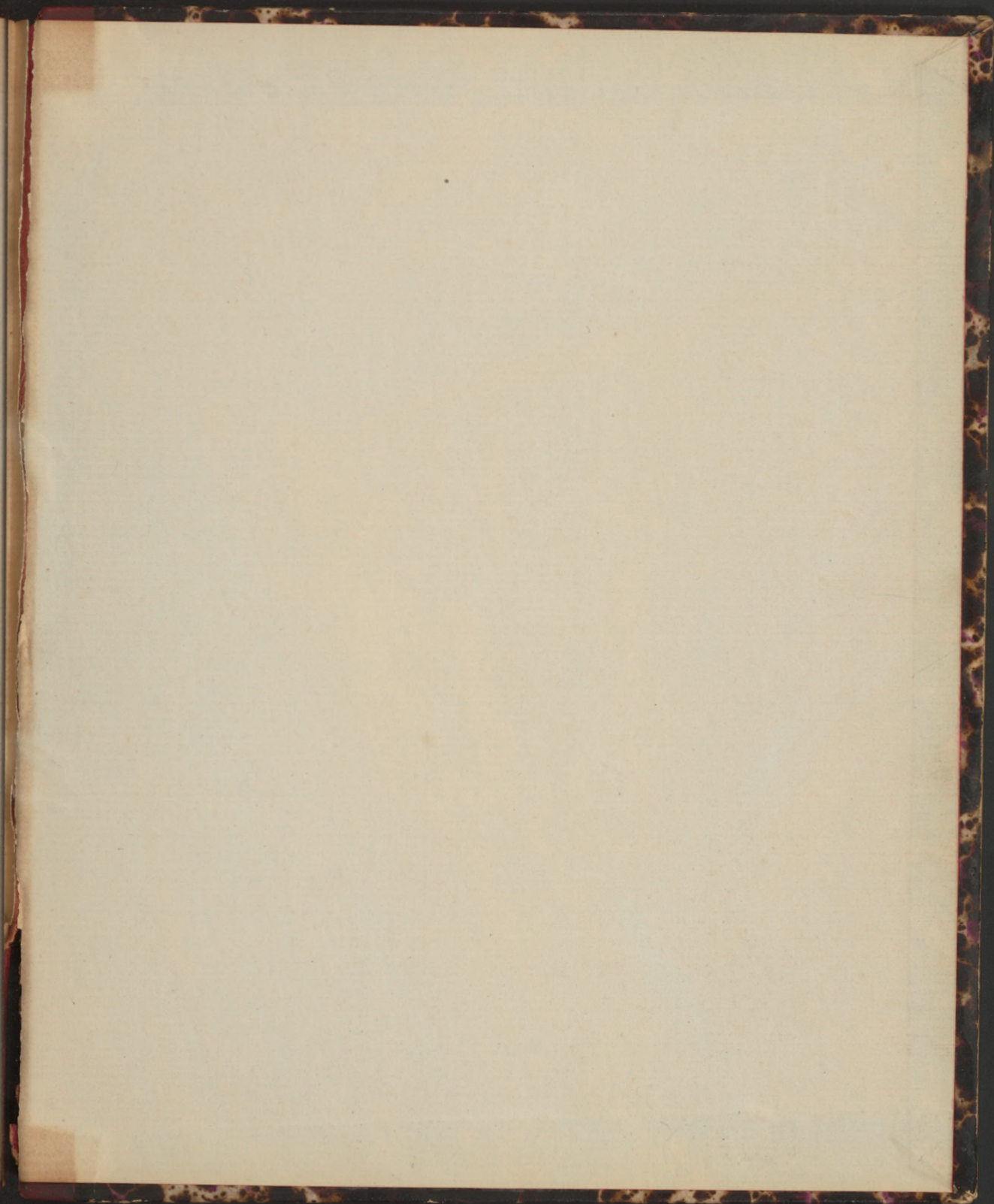


















~~Lawson~~

(1)

C.R.

Pepper. Oct 6 1887.  
Pneum. Lar. - is inflan  
with pseudo-membran  
formation in membra  
- Known as membran.  
ous or Lawson group.

It is Idiopathic or Sec-  
ondary

Onset not as abrupt as  
C.R. for

Begin with slight fever  
increasing. Cough is hoarse  
becoming weak & small.  
Called also Creeping group.

Symptoms of obstruction  
voice becomes smaller  
& whistling almost sup-  
pressed. Cough becom  
whispery & feeble



breath more labored  
angry of more play,  
Pirisy stroke with weak  
Rup mmmmm.

Supra-sti which thickens  
rinks & at base of chest,  
at times spells of spas-  
modic difficulty in  
breathing. face livid. child  
in sweat. Turn about  
dies of apnoea.

May kill in 4, 5, 6, 7 days.

It may come on in per-  
fect health but in ana-  
jony of cases you may  
find flakes on fingers.

But rarely albumen in  
urine.

Diag - It is usually in  
children.

Progressive character of



O.K.

Of symptoms progress after using Calomel the con- sider Tracheotomy or Intubation

Indication for Tracheot- omy to are Obstruction - Spas- modic attacks to Infant Croup.

Entrance of food & liquids sometimes interferes with its use.

Either proper Intubation,

### Bronchial Tubes

Bronchitis infla of tun- ing ment of B Tube - sent in Ch - Prim in Dec - atten for pain cough. Expect & Physo- new Signs.



Acute 12. <sup>①</sup> Of large tubes  
<sup>②</sup> Capillary

Prim or Idiopathic Bronch  
com fr common  
causes of Cat inflam  
as Inlet of vapor & par  
ticles but more common  
is chilling of body or  
response of relaxed body.



Tremor of multiple sclerosis  
cease during sleep or by sit-  
ting them down - they being ex-  
cited by exertion.

If Hyoscin is best remedy  
to quiet the movements of  
Paralytic agitator - Hyos-  
cyamin may also be used.

Course of central Paralysis of  
facial nerve are partial,  
then the Orbicularis Palpe-  
bral. It generally escapes.



Convulsion -

Chorea - no L to R

Tremors - L to R movements  
of antagonistic groups of M.  
- axis of movement is less  
than Chorea.

Widespread tremors. Cause  
- Chronic alcoholism, pt has  
Organic lesion of Cerebrum  
Central. - Or as result of  
old age.

Senile tremor usually  
begins at the head -  
<sup>pathological cause.</sup>  
General paralysis of In-  
sen - Parkinson's disease.  
- Paralysis agitans - Multi-  
ple cerebral spinal sclerosis.



Symptoms of voice, cough &  
Fever in this form.

Laryngoscope can not be  
used in children.

If uncertain regard is  
as membranous.

Prog. - Very grave - worse  
when diphtheritic but  
very grave even when  
primary or idiopathic.

Large percentage die with  
or without operation.

Treatment - As soon as  
diagnosed,

Control diet, mild as by  
La Jodin.

H. Atropine repeatedly given  
with gentleness - as with  
alkali in form  $H_2O$  -  $KClO_3$

$NH_4Cl$  - Solution of Boracic  
acid - Weak solution of Tan-  
ic acid



Pepsin with succia  
or lactic acid, - Solution  
not irritate - use the  
very hour.

Internal - Calomel from  
beginning - large dose fol-  
lowed by another large dose  
until bowels move 1 or 2  
times then small doses

Child (5 yrs) - 5 grs follow-  
ed in few hrs by 5 grs, then  
renew  $2\frac{1}{2}$  gr dose at 3 hrs

Alkali as  $KClO_3$  or 12i-  
cent Soda combined with  
the Calomel.

Initially Am may be  
given with  $KClO_3$  but is  
feeble compared with Calomel.



Lectures.

Stellwagen - Oct 7, 1887.

Macula - <sup>Primary Lesions</sup> Spot.

Cloasma.

Papule - <sup>Pin points to splishea</sup> Solid elevation of skin.

Papule.

Vesicle - elevation with  
mucus or sero-purulent  
contents, as from blister.

Burble is advanced stage  
of vesicle. usually, they  
are filled with pus.

Bleb - large blister with  
mucus or sero-purulent  
contents.

Wheal - as in hives - flare  
rounded elevation hav-  
ing often yellow center  
as in nettle rash.



Tubercle - Very similar  
to papule but is deeper  
& larger than papule.  
Tumor

### Secondary Lesions

Crust - Brownish discrete

Scabs - Cast off masses  
of epithelium.

Excision - Scratch mark.

Fissures

Ulcers

Scars - new growth. (cica-  
tricial)

Patches in may be uni-  
form (of one kind) or  
multiform (of differ-  
ent kinds - bullous).

Dissecti - Separate

Conceti - Running together



Types.

Circinate - when forming a circle or part of one.

Serpiginous - when like a serpent.

Imbricatus - different colors  
marginatus when edges are sharp.

Annular - round with center clear



7m Hyphidosis

① R Tannin + ② R Alumen 37 - 77 100  
alcohol op.

R Ung Diachylon

" Ung acia Lannici



O. K.

(10)

Pyrexia - Oct 10. 87.

Cap Bronchi - Bronchi

cat - most common  
larger tubes ordinarily,  
capillary form in the  
smaller tubes.

Symptoms. Fever in mild  
cases very trifling may  
walk about, in ordinary  
from  $101^{\circ}$ - $102^{\circ}$  - in severe  
to  $103^{\circ}$ - $104^{\circ}$  approaching lim-  
its of Pneumonia.

Slight changes in  
mild cases of Resp + Pulse  
no dyspnoea to extreme  
in bad cases.

Pulse from moderate  
to frequent + small



Rup + Pulse less affected  
than in Pneumonia  
Cough: prominent: loud  
after paroxysm - painful  
dry in early stage, with  
sub-sternal warmth with  
tearing sensation. in-  
creased by talking or work  
at night - Paroxysm  
may be ~~exhausting~~ is  
more.

Abroad of light, ex-  
haustion from the day  
allows it to become worse  
in evening as in Laryn-  
gitis.

By 2 or 3 days comes on  
expectoration - sputum  
at first tenacious &  
grayish with Saliva  
becomes brown yellow



(2)

O.K. - Oct 10 - 1887

Pneumonia negate in all  
form of Bronchitis; save  
in acute bronchitis in  
feeble children when  
a portion of Lung collapses  
by plug of mucus & this  
may give dullness gen-  
erally at periphery of  
Lung (wedge shaped) but  
not with other physi-  
cal signs of part consol-  
idation

Pneum. Diffus. Good in  
all except Cap form as  
to life - but guarded as  
to return & duration

Severe in old & feeble  
persons.



Diagn. Bronch

Treat of acute primary  
Bronchitis

Rest & Protection,  
One usually heated room  
to & bed if care be  
required not even to get  
up for calls of nature,  
Comp. Ointment of mustard  
leaf or plaster in timi-  
ments or iodine in  
sternal or Inter-scapular  
region

Inhalation of warm  
medicated vapor by  
Steam atom - as <sup>In</sup> Com-  
— of Chloroform (Antipyrin)  
Lime or Borax in  $\frac{1}{4}$  H<sub>2</sub>O  
as alkalin to form Preci-  
tion.

Cart de. Cuern 2



Oct 10 1887

O.K.

(3)

Then R an for early  
stage, - when Scurvy  
comes it is not ne-  
cessary to use Berber  
+ use less Opium.

Cap for is danger  
from Behavior of Rusk  
In + It + collapse +  
sphyxia

Heat of Cap Burn  
Dry cupping at roots  
of Lungs daily or even  
twice daily.

Stimulating remedy  
has called for 20 Opium  
5gr or 2 or 3 gr for 2 with  
Cant + red stone + Bella  
+ Hyoseyam + Fr Opium



2d age C 12 h + 4 age for  
the size of dose

Stypticum is best in  
strength Rsp Am + 1/2  
given frequently & freely  
either internally or by  
perdermically in the re-  
gion.

Begin with 1/40 gr re-  
peated in 3 or 4 hr for  
a few days.

Alcohol must often  
be combined first in  
small doses - can well  
by children.

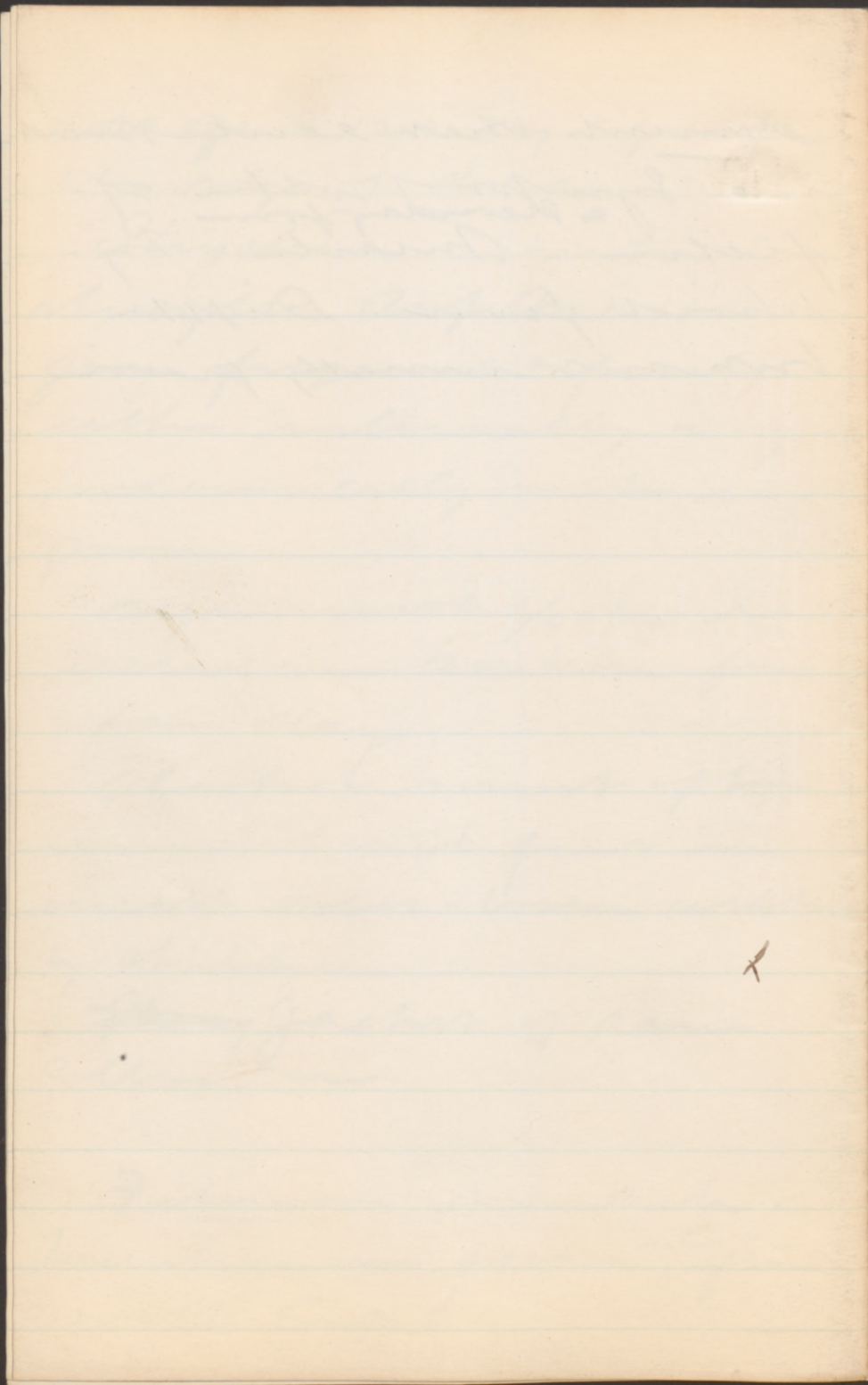
~~Strong~~ Jachet of Ram  
Cotton. L

Filimon Bronchitis  
Membrane from <sup>most</sup> ~~the~~  
with Diph.



Remember that acute sound  
is a symptom of other af-  
fection <sup>as secondary form.</sup> - Insults - Ty-  
phoid fever - Dissem-  
buted non-venereal syphilis







Iodine as antiseptic

Use the weak at first  
until well borne.

Internally, <sup>1</sup> alloy of  
<sup>2</sup> cough <sup>3</sup> Brown's Balm  
<sup>4</sup> Alloy in place.

Iodine & Acetic

6-12 grs of Iodine 5 Acetic  
Serum 1/2 oz each to  
adult

For Cough. Antispasmodic  
in Opium.

Belladonna Hyoscyamus  
vomitoria

<del>Opium</del> Sulph	gr. $\bar{v}$
Am. Iodine	3 $\bar{v}$
Eye Opium	13 $\bar{v}$
Eye Squill	13 $\bar{v}$
Eye Iodine	13 $\bar{v}$
Slyam	13 $\bar{v}$
Squill	13 $\bar{v}$
S. 13 $\bar{v}$ h.v.n.	B.S. ed 13 $\bar{v}$



osmium of Am or India  
may be substituted for  
the  $K_2H_4Cl_2$  of Pharmacop.  
ie tendency be great.

If few be sharper  
in this

§ Osmium Pulp                    gr ij  
Linar Osmium Rad            gr iij  
Am muric                        gr c  
Lig Am Osmium            2 3<sup>rd</sup> 1/2  
S. f. 1/2 H. R. M.

our danger of mixing  
powerful & mild reme-  
die hence with us  
Osmium from Separati  
bottle until temper drops  
as known by thermometer



1. frunitis + more exp-  
-ion.

Assault - On both sides  
of chest = Bronchitic Rales  
↓ Downward a bit rales in  
large tubes with coarse  
moist ones in small-  
er tubes. - becoming more  
abundant as expectora-  
tion increases. - Most  
marked in large tubes  
heard best in D or Bx  
very changeable - as the  
amount of mucus is with  
the secretion.

Bronch frunitis may  
even occur

Three <sup>physical</sup> signs increase  
as night comes on.

Capillary form given  
all the symptoms more

aggravated. - depending up  
on the condition of the  
System.  
Body. - is congenital ana-  
tomical changes.

From high. Rupt dis-  
ordered greatly. 50-60-80  
in child. 46-55 in adult.

Dyspnea, P<sub>2</sub> of glaucoma  
P<sub>2</sub> more frequent + some  
trous force sufficing  
from non-aerated blood.

Cough - unmothered - wheezing  
ineffectual

Phys Signs of Cat Bronchi.  
Bilateral - not more in  
large tubes. - <sup>but at periphery</sup> Sub-crepitans  
(coarse-crackling) in with  
D<sub>2</sub> & B<sub>4</sub> more in D<sub>2</sub>



Chronic B { Bronchial Dilatation  
allied af. { Emphysema  
fection { Asthma ①  
O.K.

Paper - Oct. 11 - 1887

Chronic Bronch. - Chronic  
inflamm. of Bronch. Mucos.  
Causes - ① Repeated acute at-  
tacks ② Slow operation of  
ordinary causes of acute at-  
tacks ③ Constitutional pre-  
disposition as Rheumatic  
or Scroph. Rickets & Scroph-  
low in younger persons.  
④ Persons with a tendency  
to Chronic Bronch. ⑤ Occupations

Symptoms of Chronic Bronch.  
Often very mild as to its  
disturbing general health,  
but in other cases the  
general health seems to  
have invited it & then  
a break follows.

Some sun can beak  
the general health by  
in loss of flesh & strength.  
Cough seen in larvae  
young & very annoying  
not occurring at any one  
period of the day, attended  
with expectoration if very  
copious & flary it is call-  
ed bronchotrachea - or  
pneumonia & smaller in degree  
in amount according af-  
fecting the general health.

Gx shows leucocytes at-  
tended epithel & mucin.  
- no bacilli or long threads.  
Hemoptysis is rare.  
Pleu Sigin - Dullness  
negative.

Enormous & Dist. Rate of  
lowe portion hairs of both



O.K.

(2)

Oct 11 - 1947

Residual air in creases.  
Lidar ... Increased.

Excitum & Exertin in-  
crease the Dyspnea & also  
see Bronchitis exaggeration.

This followed by weak-  
ness & bad color & flabby  
not necessarily thin -  
very worst effect is up-  
on the H's & results in deta-  
lable of R's H's with insuff-  
ficiency of Tricuspid Valve  
& following this a general  
venous obstruction & as-  
cending drooping.

P. Signs of Vis Emboli;  
Chest constantly distend-  
ed - Ribs raised & move  
horizontally - Sternum raised

ant part diam increased.

Bounded - short - short  
No movements of expansion  
in & retraction but ex-  
aggerated movements up  
Pneum - Qua Resonant  
increased & exaggerated.  
- It's covered - exp & heat.

Vocal. Firm & Resonant  
on both decreased

Rest Hum - Inspiratory  
element is very weak <sup>& short</sup>  
Exp element is prolonged

It affects both sides  
Diag of Chn Bronch.  
Hist of ear - long course -  
nature of cough - good gener-  
al health remaining good  
not the case in Phthis  
Microscop Exp & Short



Both sides equally. - sweat  
change from time to time  
- No signs of consolidation  
- Dilated Bronchi may  
suggest cavity (Nominer)  
- no fever is very little.  
- no Hem - or diarrhoea  
no laryngitis in nearly  
all cases.

Then look to 1st.  
Prog - Uncertain - Recur  
- Very good for duration of  
life.

### Asthma.

Generalized with Ch Bronchi.  
It is not of bronchial  
crack.

Acute irritability. -  
most cases of Asthma  
of Bronch mucosa mucus  
in different persons.

As Run + Hay Asthmas in  
Change of Climate Residence  
Temp + Moisture of air  
in person of Spasmodic ten-  
dency

Asth is an attack caused  
of Spasmodic dyspnoea  
caused with short condition  
of bronchial mucous membrane  
& with Spasmodic in paroxysms of  
muscle of Resp.

Low <sup>as Bronch + Pulmonary</sup> muscle are in state  
of Spasmodic other are in state  
of exhaustion



Fungus - Signs show re-  
markable fluctuations  
of season etc.

The Ch. Inflan in the  
tubes of low vitality: al-  
ready may cause saecular  
Dilatation at roots. 2 in  
diameter rounded in form  
from thickened walls. - It  
causes as much trouble  
as an abscess except de-  
struction of tissue as de-  
composing spores, hectic  
fever

Phys. Sign of Cavity.  
- One row of big tubes - More  
common behind over Roon  
Dark solid percussion or  
tympany - Tubula below  
ing in Supr & Exp. Pector.  
illeg. & Sign of Cavity.

② *Empyema dilatatum* like a  
glove.

*Empyema (verruca)*  
is another accompaniment  
of the Bronch. It is state  
of permanent over disten-  
tion of air cells of the Lungs  
causing induration of

General weakness of Lung  
tissue, & the air can not  
get out of Bronch tubes in  
coughing hence it distends  
the spaces & borders of Lungs.

It may follow asthma & c.  
but this passes away,

Phlegm Big Pneumonia & Permanent  
Habitual abiding Dyspnoea  
as elasticity of air cells  
is lost



OK



H. C. Wood. Ver 29 1887

Junies - used to overcome debility if cause be removed or help life along if it can not be removed.

Debility is often the result of intestinal catarrh of which diarrhoea is the result

Classes Groups - Vegetable  
- Mineral =  
Fungus

(veg Junies) } Simple .1  
                  } Purgative .2  
                  } Aromatic .3

Have principle as stimulant to the skin

Having added some other purgative properties

Excess of 1 an irritant  
narrow down - look to de-  
nitating of bark ment

Indications for 1 is a loss of  
epitite -

After venery.

Setivity of spring time.

Convulsion of senti disease

Quassia -

Simant Co

Quassia quassia thin powder  
convulsion movement in low  
animals - gastric distress  
& headache in man.

Principle is seen in  
Co - in pills  $\frac{1}{2}$  - 1 gr.

Lines - yxxxy - xxxwxh

Drug for Quassia 1 gr  $\frac{1}{2}$  per  
boiled in 1 pint.

Quassia.

Solid Co is  $\frac{2}{3}$  of quassia

Lines Co is most elegant  
of all the bitter juice



2

OK,

XX

with  $ZnSO_4$  or  $Pb(C_2H_3O_2)_2$   
or some of impure alkaloid.  
In China garden calant  
with hepatic tissue as result  
of use of alcohol. always  
in pill-form.

Marked uterine contrac-  
tions by injecting it into  
bitelus - for menorrhagia  
for cervicitis & vaginal inflam.  
- in uterine - in nasal cati  
- in conjunctivitis;

Eupatorium (Bonn-rob)

Superior as bitter tonic

Very to drink of  $H_2O$  on  
going to bed by acting as a  
anodyne

Bark of Cornus

## Aromatics.

Activity depends on presence  
in the of volatile oil.  
action in common to the class.

1. Stim. to gastric motor muscles  
in time for it time being  
not kept up long as in simple  
times. - Carminatives by re-  
pulling the gas. Reflex peristalsis.  
Effect on the carrying dis-  
turbance.

## Oil Caryoph.

Acts as local anesthetic  
- powerful poison to all tissue  
but their slow absorption pre-  
vents this.

## Clues

ginger

Pepp

Cinnamon

Cardamom

Mint - An

" Pip



OK

Oil Sassafras.

- Comb. In - In Brast - Check  
him for liniment.

Oil Sassafras.

Salicylate of methyl acid  
is Salicylic acid.

Oil Nutmeg.

Useful in local inflamma-  
tion in 1/2 - acts especially on  
cerebrum but capable of  
use as specific in  
hysteria - can prove per-  
sious. - for hysterical convulsions  
gr XX - XXV Oil - gr XXX - XL nutmeg.

Antium (Chamomile)

Mild stimulant is given to  
satisfy the moral needs.  
1/2 in fruit, with plan at  
night

## Serpentin

Weak - more used by itself

### Peculia Bitter

Prunin (ing. - Mild cherry bark.  
Curtia Tannic Acid, with  
some piperate, Eucalyptin &  
Amygdalin in form they  
was used in Plithin but  
its action is too fugitive

Eye - as vehicle & conjunctiva  
by adding Morphine

### Eucalyptus

Local action is slight - however  
can not be used as counter in  
in carcinoma.  
Absorbed more freely than  
the other oil.

Stx - xx produce a sense  
of warmth in the skin - sense  
of calm, no relax. It is  
low as 5° - sense of numb.  
ness in relation numb. - abolition  
of muscular numb.

Chronic dose - paralysis



death from paralysis of  
of action in minor cases.

Fall of Rm by effect of 1<sup>st</sup>  
Dose. Sedative & whole  
system look on end to 1<sup>st</sup>  
must.

Chlorine for lungs to win  
Dose of sedative on non-  
convulsant - in Bronchitis  
after first stage  
in Asthma with it - Intense  
Cath - Antispasmodic  
is superior - Antispasmodic  
is unreliable.

101



Quinine

Fennel

Tannin acid in Cinnamon,  
Ull-lum dem p<sup>ij</sup>-ij f Col  
f Dulcis relax with diacarb.  
stips it by stimulating it to  
normal ton - in the gross  
diacarb.

~~Tinct~~ - Cinnamon

Ull cin p<sup>ij</sup>-v - flavoring

Tinct. ① Mild draught of  
relaxation as with H<sub>2</sub>SO<sub>4</sub> Ac  
& Symp. ② Menorrhagia in  
f<sup>ij</sup> in case of want of ton.  
Card.

Tinct Co. -

addid i

Tinct Co

Tinct genti

H<sub>2</sub>SO<sub>4</sub> w Ag. Ref.

Symp.

Sting chum

Orange P. - flavoring

Oil cedar

Oil - Anise - Carminative  
ginger.

It has an oleoresin beside the Oil  
- as additive to Lonic pills -  
as in Black pepper & Red Pepper.

Hot oils eliminated through  
the Renal system & can pro-  
duce strangury.

Ginger. Hot Inf. as an-  
dospic in reddish sup-  
purated menstruation - in  
abdomen colic.

Menthol

From turpentine.

For neuralgic pains



## Barberry,

Contains berberin, 3-5% with  
official - contains in low  
amounts in toxic doses.

## Columbo.

No solid Exh.

Exh fl -

Liver - 1/2

## Chinitt

Solid Exh  $\frac{1}{2}$  =  $\frac{2}{3}$  of Quas Exh

Set in Liver especially after  
anemia & debility following the  
heat of the liver

## Hydrestus.

Golden Seal

3 alkal - Berberin

- Hydrastin

- Janthopoxin.

Pure hydrastin is colorless  
berberin is yellow.

Hydrazin

Has distinct power of over cir-  
culatory & nervous system -

- Spinal convulsions as in  
strychnine death may occur  
for cramps of Resp. m.

Small doses increase the Art  
Press. - Large doses decrease.

It is depressant to the muscle  
causes diastolic arrest -

It seems to act on the  
arterial thus causing the  
rise of art pressure.

Local paralyzant of nerves  
of sensation.

Used - for mucous membranes.  
- acts well locally - & also  
same in D. tub.

In proportion of the  
bi period is passed - con-  
cussion from Art m. x. x. -



Wills. Brooklyn - Nov 19 - 1887.  
Gymnastics for Nervous Diseases.

1. Massage
2. Movements.
3. Electrical.

In ~~other~~ movements we have  
active and passive - or semi-  
active and semi-passive or dup-  
licated active Swedish move-  
ments.

Zander method, is where there  
is a steam apparatus, and of lim-  
ited use only.

Resistance apparatus are useful  
in some cases - elastic tubes &c.

Respiratory gymnastics:- As in  
Blaker's book - taking a full  
respiration ~~at~~ each movement.

Begin with light dumb-bells or  
no weights at all.

1. Dumb-bells above the head,  
taking a deep inspiration &  
lower hands laterally and ex-  
pire while raising them.
2. Run 1 foot forward, throwing  
dumb-bells back & return forward  
& taking in.
3. Hand against one side, throw  
dumb-bell against the top of  
the shoulder.
4. Dumb-bells behind neck & go  
down.

Place patient on back then  
let him raise either the feet  
or the body.

In Hemiplegia (central) make  
a quick movement with  
sound limb & quickly follow



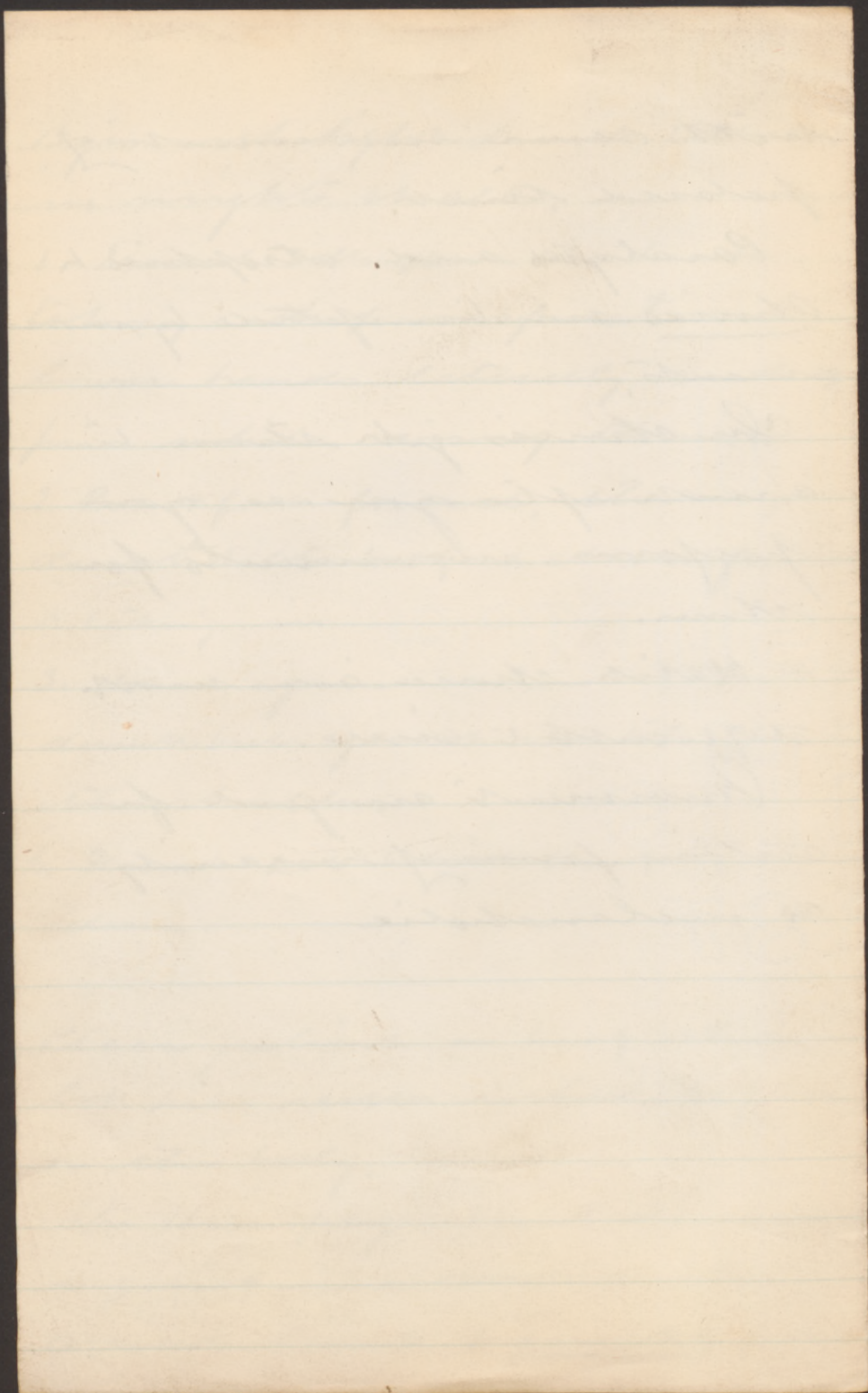
with same movement of  
pulsed limb.

Paralysis and atrophies &  
Chorea are benefited by move-  
ments.

In chorea get them to  
crawl after you as you  
perform movements for  
them.

Habit chorea are most  
difficult to cure.

Movements are good for  
certain forms of insanity  
as melancholia





OR,

Paper. Feb 9, 1888 (1)

Small Pox,

Se. Sp. form of about 20 days  
<sup>highly</sup> contagious & epidemic - without  
anatomical lesion, character-  
ized by striking & peculiar  
eruption <sup>powerfully</sup> influenced by sea-  
sonal factors: <sup>often</sup> <sup>often</sup> <sup>often</sup> <sup>often</sup>  
<sup>known</sup> <sup>known</sup> <sup>known</sup> <sup>known</sup> <sup>known</sup> <sup>known</sup> <sup>known</sup> <sup>known</sup>  
<sup>from</sup> <sup>from</sup> <sup>from</sup> <sup>from</sup> <sup>from</sup> <sup>from</sup> <sup>from</sup> <sup>from</sup>  
Body - by <sup>stomach</sup> <sup>of</sup> <sup>the</sup> <sup>mouth</sup> <sup>by</sup> <sup>the</sup> <sup>mouth</sup>  
tract or may be swallowed -  
can be carried by fomites.

It occurs no sex nor age.  
Complications - Nephritis - Endo-  
carditis & Myocarditis - Extensive  
of eruption to mucous surfaces  
as Laryngitis pustular - Bron-  
chitis.

Blood - crisis dissolved in bad  
cases -

It's form has not been isolated  
Incubation maximum 2 weeks

no matter how long  
vaccination 1 or 2 days after exposure  
sum will check it or modify it.

Invasion - abrupt with chill &  
violent headache, frightful deaf-  
ness & intense pains in limbs  
- with pre-emptive stage is also  
marked by vomiting, loss of appetite,  
102-105°-104°  
fever, flushed face, rapid full  
pulse - lasts for 3 days.

Stage of Crustation  
Papular discent, <sup>eruptive parts first</sup> or face may  
be rounded hard - stick-like - of  
red color - 3 days

Oricular Stage - Sum from its  
summit to become a vesicle & sum-  
bitiated. - This is a cellular structure,  
sum the general symptoms sub-  
side from fever down, headache  
& backache

Crustula Stage - By end of 6th  
day the crustulae become turbid  
& purulent - This is the reason



Pepper <sup>OK</sup> Feb 9. 1888 (2)

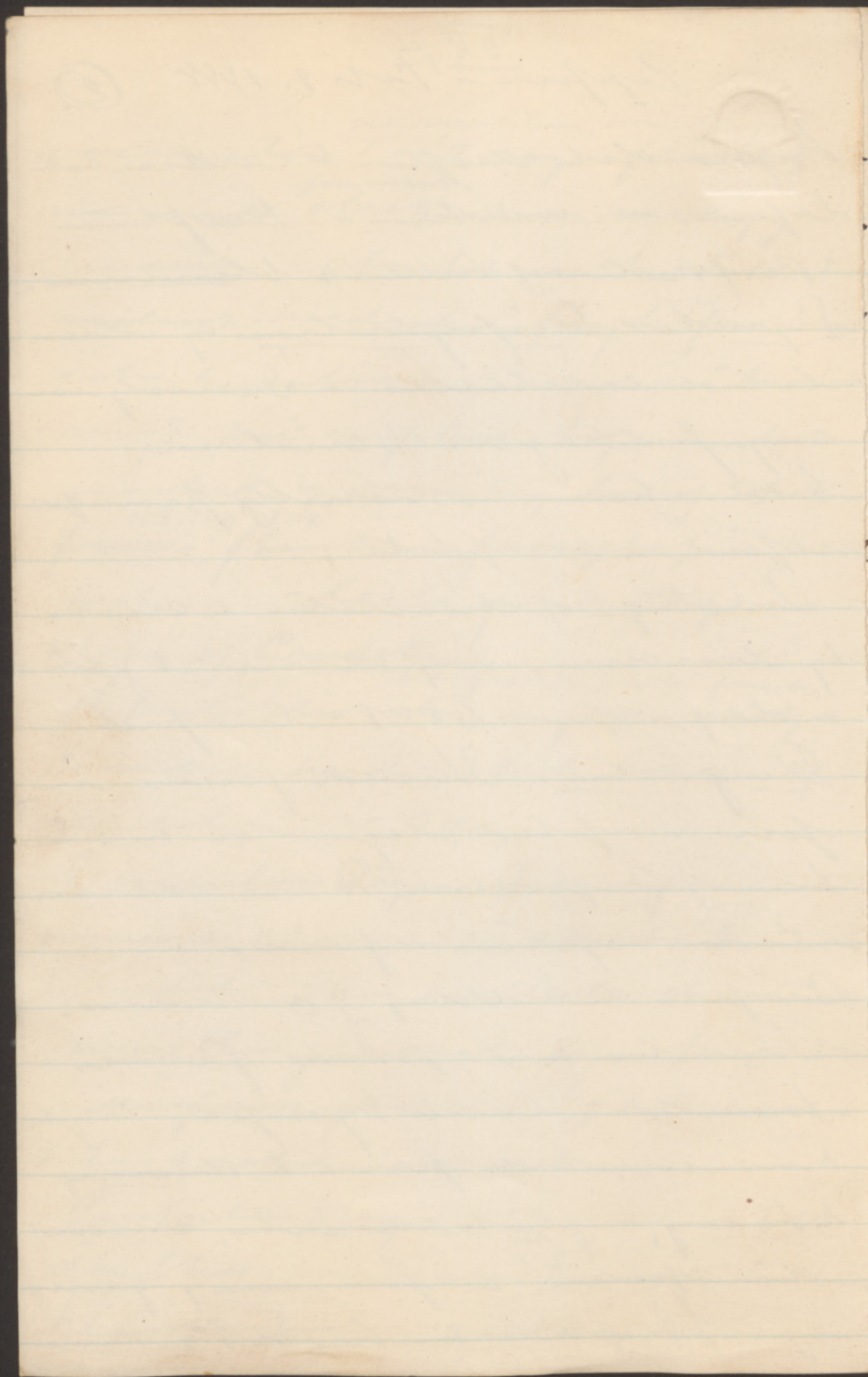
Myocarditis due to cardiac col-  
lapse or weakness - Death  
- Purpura of humi & blindness.

Signs - Disfiguration by reticu-  
lar cicatrices - Scarcely con-  
sist. fitting in Vesivoid.  
Convalescence is usually prompt  
rapid & complete.

In stage of desiccation & crisis  
by diarrhea may occur - 1 gel  
a day - Sp. 1.001 - limpid

Diagnosis - I should guess in  
pre-eruptive stage - or in his-  
tory of exposure to no vaccina-  
tion & pain & fever.

Erupts on 2nd day of sickness.  
- Puscles to Typhus fever  
Puscles - with symptoms - cough  
& no marked pain & drooping  
& heavy - flat & macul, erupts  
- disappears in puscles, fever  
of up to 102 down in S. P.





day from - maturation give  
the partial count in  
masses' umbilication and  
in about 3 days the pustules  
become shriveled from the ab-  
sorption of the matter

Crustation - 5 days.

Disquamation - 3 days etc.

Pain from depends upon amount of  
blood poison.

Second fever depends upon the  
amount of eruption, - ends by  
lysis by 17th day.

Kind of eruption.

- Discrete.

- Confluent.

Child being <sup>varieties</sup>

Orainay

Grave from amount of poison  
as well as amount of eruption.

Malign - sleek - blood disin-  
tegrate - bloody liquid in

Incubation = 2 wks.

Invasion & per.

eruptive stage. 3 days - Primary fever

Eruption	Papules . . . . . 3
	Vesicles . . . . . 3
	Pustules . . . . . 3 = 2nd fever.
	Desquamation . . . . . 3
	Desquam . . . . . 0

vesicle - general pustule -  
then for membranes - to death  
for Pap to Pust stage in  
variable

Variceloid - Stage of invasion may  
be intense - eruptive & relief of symptoms  
pap  
unusually & ~~fever~~ but more  
the secondary fever is more or  
very slight when the tes-  
ding is to pustulation - to a  
tooth seen - incubation  
is 10-14 days.

May be discrete more likely than  
small-pox or confluent.

Complications - Very intense  
secondary fever. - Extensive in-  
mucous passages. - Endocarditis  
with valvular murmur.



0.14

Hood - Feb 9, 1884 -

①

Its odor is objectionable. - 40.

Iodol - Used in  $H_2O$  - Its odor acts as Iodoform - Poisoning also possible - & fatty degeneration acts by its decomposition products as Iodoform. Iodol is decomposed more slowly than Iodoform. Is more active than Iodoform.

Used as Iodoform - In tuberculous ulcers of Larynx, etc. - High cost.

In chronic Syphilis 30-60. - H. S.

Cod - Fine - Oil.

Biliary acids - Iodine - H.

Gadolin in not its active principle but has no one active principle.

In health in lower animals - cannot accumulate of fat but if given too freely it disturbs digestion & causes to accumulate fat.

Increase Red Corp. & diminishes amt  
of fibrin.

Its ease of absorption & oxidation  
- as passing through membrane  
makes it valuable. It also acts  
as alterative.

Urea - In tendency to excretion  
but depends upon the cause as  
in tumor it will only retard  
it, but if more generalised as  
in Phthisis especially in the con-  
dition of depression preceding the  
Phthisis by its apparently cause-  
less - continually catching cold  
- Cod. L. Oil - Whisky & avoidance  
of cough mixtures. - If organic  
changes be present we can  
prolong life by Cod. L. O. - Whisky  
& fresh air.

In Scrophulous of great power  
combined by Lacti-phosphoric  
if there is gland swelling &c.  
Standard remedy.



Wood Feb 9. 1888 (2)

OK

fatal gastritis - enteritis.

In urine - urea diffuses - amount  
urine diffuses as when purging  
or not.

Urea - In Gout in large dose  
will <sup>cut short</sup> suspend paroxysm - in  
other subjects will sent  
gout but not in arthritic  
- as it causes redness & in-  
-ternal gout by the blood  
going in - Dangerous in acute  
gout in large dose & nervous  
men.

In Chronic Gout by small  
dose - 10 grs t. d. within di-  
-arrhoea limit with 1/4 of  
food.

Poison - Ferric acid - 6 grs to  
as part - internal Antidote.

Moods

Muzerum..

Sarsaparilla some good in  
chronic syphilis. Gypsum  
drench alternated with Symp  
Sarsap Co. -

Sarsap Co fl with iodine  
in best form.

Symp Co - as vehicle

$1d2 \text{ } 13407$   
 $1d2 \text{ } 13407$   
 $1d2 \text{ } 13407$

$4M3 \text{ } 1303 +$

$N2 \text{ } 13407 + 6M2 \text{ } 804 =$

$M2 \text{ } 13407$

$1+3 \text{ } 003 = 1470 \text{ } 187$

$M2 \text{ } 0 - (1303)2$



In chronic rheumatism if with  
lymph tumor.

In skin diseases.

In neuralgia attended with  
loss of tone

In this condition it is not a  
specific but builds up nutri-  
-tion.

Best given in soft capsules  
holding ʒi - in pinch of dry salt.

- In whisky & water - In ale

- In emulsion with oil of bitter  
almonds.

Dose: - Tendency to diarrhoea  
is counteracted.

It is right in weak stomachs

Digest of fatness is the  
means of the amount.

### Phosphates.

Phosphoric acid is stomachic  
tonic for dyspepsia as

Horseford's acid phosphate

and does not affect or system.  
Hard of loss in meadow bon calve  
ricketia - In dogs by keeping phos-  
phorus from the food.

In many children with ill  
teeth from a deficiency in phos-  
phorus as is case in wet nurse  
as in Wood's child - can increase  
the amount in the milk of wet  
nurse - They are largely stim-  
-ulated from amount of Intest.  
To be given in Solution - with 50%  
Cod-L. Oil in Ricketia child.

### Colchicum

Colchicum - (vine alone to be used  
10 gr - no sympt - usually - or  
initial disturbance

40 gr - purging - mucus - pain to  
large.

Larger - Vomiting - purging - pain  
is very great - pulse falls to  
collapse with cramps.

Rapidity of death not depending  
upon size of dose - acts but  
little on the or the system -  
but kills by producing



OK,

Pepper - Feb 13, 1888. ①

Treatment - No specific for the poison.  
- Only assist patient - Adapt  
the nourishment to state of patient  
as to diet & stimuli.

May control the fever but do  
not injure the heart nor cir-  
culation system.

Primary fever does not often give  
hyperpyrexia.

In Secondary fever about 9th day  
the fever (convulsant) may be very  
high. - Sedation as Opium to  
alleviate irritations. Mild derivatives  
as diuretics or gentle laxatives  
do not attack with powerful  
antipyretics. No effusion of  
cold water except in pre-emp-  
tic stage. Immunization for  
the entire as in Scarlet  
fever, Any less vesicles appear

Cats - 3

Typhoid.  
Measles  
Influenza.

Skin 2 -

Scarlet  
Small Pox

and then break in liquid excretion

Stimulants when indicated.

Sedative for the pain & irritation

as Opium per Stomach & Rectum  
in small doses - or Bromide

or Chloral or Cannab Ind.

To prevent pitting - Make inflam

mild, if only 12 puncture open  
them cautiously & touch with  $\text{AgNO}_3$

if numerous exclude light,

keep cuticle soft & prevent it

thick crust - Oxy Hydrate & Oxy

Petrolin on white face shield,

<sup>Sat Sol</sup>  
or Sulfur - P in Chloroform.

Stimulant in typhoid form

as Turpentine & Am Carb &c

Mortality is small except

in old & weak.

Typhus.

T. abdominalis = Typhoid

T. cerebro. spinalis = Mottled form = C.S. Meningitis.

T. recurrens = Relapsing form



OK, Pepper Feb 10, 1884 (2)

Five runs high & stays steady (high  
of count from) skin red & burning  
hot - calor modest.

Breath & Pulse <sup>100-135</sup> much disordered  
corresponding to state of fun.

Pulse is weak & collapses easily  
& runs small - Hypostatic con-  
gestion of base of lung bilateral  
is now developed (bloods logged)  
- with shallow & imperfect.

No digest symptoms - no disten-  
tion no pain - bowels costive or  
<sup>guar.</sup>

Tongue is heavily coated, thick  
& may keep in appetite

Urin inclinedly febrile

On 3rd day eruption in single  
crop, - the activity of eruption has  
a proportion to the virulence of  
the disease. no chem in eruption,  
<sup>numerous small</sup>  
rounded, miliary red maculae  
barely elevated, not coalesce  
disappear on Press or first. then  
become petechial (blood is effused)  
- The darker the eruption & the  
rounder is - the more danger.

lasts until close of disease & then  
slowly fails. Tendency to recrudescence  
Red sores are very common - in  
very few days

Duration - about 10 - 12 days.  
Often ends by crisis & purging  
or vomit or sweating

Complications but few.

Signs: as parotitis - but some  
breakdown of legs as approaching  
paralysis, or breaking of brain.  
Mortality - great. 50 - 33 - 25%



Typhoid state is common in this class - typhus asymptomatic.

### Typhus Fevus.

See the fever, contagious, and rapid without anatomical lesion seen that of the blood, running course of about 12-14 days, with high pyrexia, marked typhoid symptoms <sup>characteristic</sup> & eruptive, - ending often by crisis

Due to specific poison.

One of the most contagious ranking with Smallpox & Measles in this respect.

Poison communicated by fomites & carried to great distances.

Crowding & filth & destitute favors this poison greatly - It seems to be an animal poison - In crowded jails & ships & regiments violently.

all eyes to both sexes equally.

Protect strongly against 2nd attack.

Blood is liquid in dead body, lining of ~~stomach~~ stained, tissues

disposed to protrude & often soft  
& enlarged as in all forms.

Onset abrupt after interval  
of not more than 9 or 10 days but  
may be shorter. Onset usually  
high fever immediate, debility  
headache & backache & strike  
down immediately.

Appearance - dull expression -  
face dusky flushed uniformly,  
eye is injected & pupils con-  
tracted (fixed) but dry.

Symptoms - Dullness deepening  
quickly into stupor, often Delirium  
of active type, - (They may not go  
into stupor even if in stupor & some  
vigil most marked in this  
disease.)

Slips down in bed, tongue trem-  
bles, retching of vomit, <sup>tendon</sup> twitches



Benzoin acid said to make urine acid so annu-  
mulate a phosphate & for action on the muco-  
sious membrane.

Wood. - Mar 8 - 1888.

Expectorants. -

OK

To. inflex part turn when descend.

Atomizers. - perfect edges - mouth  
firm well in - breath deep & slower.

- Acting as tartar acid or slow for re-  
-lexation, Iron Am as stimulants,

Lime water for iritis of Lacry. this  
sedate in commencement of acute  
laryngitis.

Agents acting on N centres.

Stychnine acts on the nerve centre  
<sup>don muscular pro</sup>  
- not in acute but in chronic cough  
of old people.

with or without asthma, in  
Emphysema with respiration

Diacetytes - to relieve cough but  
remember it is necessary to cough

to relieve usage of ~~the~~ mention,  
but more useful in irritative  
cough with but little <sup>secretion</sup> expectoration

- much chief secretion as Morphine -  
Hypocyanum to pt X-XV does not  
effect secretion.

Be careful in using Iodine in early  
bronchitis.

Chloroform - as relief of incurable  
condition as fibroid phthisis as  
whisky glycerine & chloroform by  
good even in ordinary bronchitis  
Iodine gr  $\frac{1}{25}$  -  $\frac{1}{30}$ .

### Alteration

Arsenic - for chronic bronchial  
as in fibroid phthisis & tub phth  
with no tendency to breaking down.

Pot Iodid - good for syphing  
lung - good in chronic bronchitis  
of children as in enlargements  
as gr  $\frac{1}{2}$  t. d.

H<sub>2</sub>S - Injected into Pectin CO<sub>2</sub>  
saturated with H<sub>2</sub>S - It did not  
act on the tubercle bacillus - not  
much good - but does good in those  
cases with catarrhal processes or  
as outcome of catarrhal pneumonia it  
lessens secretion in 24 hrs.  
It is specific - Useful for pulmonary catarrhs.



- In respiratory chamber as I springs.  
- Well given as I water in CO<sub>2</sub> per  
stomach -  $\frac{1}{3}$  in 2 or 3 hr. - for  
then with 13 calant & Bron.  
chamber.

1. Sidelin  
2. Stimulant.

Sidelin in 1st stage of Bronchi.  
to when mucus is dry heavy is light.

Tartar emetic - most powerful  
-  $\frac{1}{4}$  gr in 15 min until vomits to  
the cup quiet. - Not in children.

Spice -

Syrup is generally good enough  
Poh Cit - much pin in full  
dose - for adults  $\frac{1}{3}$  in first 24 hrs  
as in brown cold lemon juice

27, Syrup Spice  
Stimulant -

Syrup -

Syrup - less  
Syrup - Syrup  
but have no definite

Traditional  
good for  
advanced  
Bronchitis  
influenza.







OR

Pepper. - Mar 12. 1888.

There must be a disturbance of the  
man's economy at the time of attack.  
What constitutes this tendency to  
convulsion? ~~xxx~~ Unstable equilib-  
rium of motor areas, <sup>impairment of vitality</sup> of cerebro-spinal axis,  
or may be in-  
herited or acquired

<sup>Reflex</sup>  
Cause. - Instability of dentition especially  
in child with of neurotic parents,  
or of plaster, or irritant creosote, and  
burnt paper, intestinal worms  
or hardened faeces, by bilious attack  
in some persons, in some cases  
a few days previous there is a lithaemic  
condition, <sup>very common</sup> from menstrual disorders,  
exhaustion, exposure, mental stress  
by lowering vitality.

Epilepsy is the predisposition and re-  
quires an exciting cause to develop  
the convulsion.

Diag. - Can not make from 1st attack  
in child from eclampsia.



but the more trivial the cause the more likely it is epilepsy.

Procturnal form is often overlooked but look for some tongue or awake with a bruised feeling.

Patit mal - from syncope in weak persons called weak or fainting spells sting for cause of anaemia or cardiac failure or no cause, therapeutic test is most important by removing the anaemia & cardiac failure.

Convuls  
From Anaemia in Org Dis - Crem  
the main,

From Hysterical Convulsions - Hysterical temperament, <sup>+ History</sup> attacks brought on by distinct cause - consciousness more or less - in falling falls on soft spots - trace of coordination in the movements, expression is ecstatic or wrath or screams, therap test <sup>zone of</sup> ovaries irritate or spinal anaemia

Org dis of brain - <sup>thrust of hypth. - some</sup> Tumors involving a



motor area cause "epileptiform" attacks,  
but in intervals present signs of  
ascending neuritis  
clouded <sup>"</sup> headache,  
- these attacks are spasmodic more  
than epileptic, and may not lose  
consciousness - History of Epilepsy.

Prog. Difficult - Very bad  
Many cases are singularly controllable  
& soon cured. - If habit be estab-  
lished difficult to cure. <sup>+ frequency of diges.</sup> In in-  
cipiens with good health it is hopeful but  
anxious.

Treat. Remove predisposing cause first,  
- Hygiene - Mental & physical exercise of  
proper amount. - Most important is  
to increase the tone to vigor and not  
to check the convulsion down by drugs.  
Remove cause of reflex irritation and  
not assimilated with improper diges.  
& dist. bowels, urine,

Drugs. Nutrient <sup>"</sup> tonic as Cod L. Oil  
As. Fe. Zn. Mg. Am.



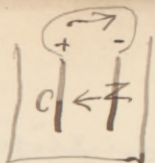
Ammonia & nitric - from iron & carbon and  
hydrogen - Fe - As.

If nitric is present -  $2\text{NO}_2$  -  $2\text{NO}$  and  
- Chlorine of air in presence

Antiperiodic - Bromide in water  
Dissolved - can be used to value  
as compound inerts.

Must change presence of Bromide in man-  
-made administration - must not de-  
pend system of Bromide in case of irritations  
- Adults do not see  $\text{H}_2\text{O}$  C. d. 15 begin  
increased a combination with  $\text{H}_2\text{O}$  a  
 $\text{H}_2\text{O}$  - if this depress combination of C. d. and  
Loid, - If low layer does not be used  
give them up to build up systems.





Wood, Mar 29, 1888. ①

An Cl C = Anode closing contraction

An O C = " opening

K Cl C = Kathodee closing

K Cl O = " opening

$$An Cl C < K Cl C$$

$$An O C > K Cl C$$

$$An Cl C < K Cl C$$

When 2 substances are brought in con-  
tact a galvanic current is generated.

- It requires contact to generate gal-  
vanism.

$C$  = current strength

$$C = \frac{E \text{ (electro motive force)}}{R \text{ (Resistance)}}$$

$C$  is independent of size of plates.

$C$  varies with different substances

best is Z & Carbon.

$R$  is inside (i.e.) & external (e.r)  $R = i + e.r$

$$\text{hence } C = \frac{E}{i + e.r} \text{ (Owen's Law)}$$

$$\text{Suppose } e.r = 1000 \text{ i.e. } C = \frac{E}{i + 1000 \text{ i.e.}}$$

pure has more resistance than  
with 1000

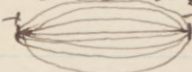
to overcome etc with multiply electric  
not force by multiplying number of con-  
tacts (more cells)

In American <sup>or in cables</sup> Co's with is <sup>our</sup> little  
increased size of plates. - hence

$$100 \times e = i r \quad e = \frac{e}{r + 100e}$$

but with reduced by bringing plates  
near to enlarge plates to have large mass of  
fluid & of good character of conduc-  
tion.

Measure (unit) of electricity. - volt  
unit of resistance is - Ohm  
hence  $e = \frac{V}{\Omega} = \text{ampere}$  but this  
is too large hence milliamper  
is now unit of current strength.

In organization - a current breaks  
up into sub currents   
& each strength is inversely  
proportional to the resistance

If plate is used  
1/2 milliamper of Mullin  
4 of inch methods,  
there is <sup>really</sup> only one kind of current



but 2 as to method of generation,  
1 Primary current is had from,  
both called chemical currents  
or continued:-

Induced in faradic battery,  
by passing chem current on inner  
coil, on outer coil an induced  
current is generated:-

Current of 1st coil + current of 2nd  
coil - made only on making &  
breaking of inner coil.

Soft iron is 1st coil becomes mag-  
net & attracts the tongue.

The currents run in opposite  
direction & to to for currents  
in outer coil & hence no  
+ or - prob.

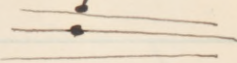
In inner coil do not get both  
currents - as the induced current  
goes into the battery

In contrast occurs with  
chemical currents as doing to

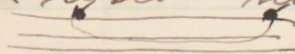
springing of the current.

By very closely interrupted currents as in ordinary dynamo the same effects can be produced as with galvanic currents.

No differences between different currents.

To apply to a nerve - ~~nerve~~  
having <sup>one</sup> sore spot 

wet skin with salt water, & put a large flat pole at a distant point.

To influence whole nerve - ~~nerve~~  
2 ball poles 

Proximal point is point of entrance of the N to the muscle - ball pole over it & large pole on other side of limb.



Novel, Mar - 31 - 1888 (6)

Amplitude = + Pole  
Latitude = - Pole

$An\ Cl\ C =$

$An\ O\ C =$

$K\ Cl\ C =$

$K\ O\ C =$

$\begin{matrix} \leftarrow \\ \rightarrow \end{matrix}$

$An\ Cl\ C < K\ Cl\ C$   
 $An\ O\ C > K\ O\ C$  } muscles normal.

$An\ Cl\ C = K\ Cl\ C$   
 $An\ O\ C = K\ O\ C$  } muscles in first stage  
of degeneration.

$An\ Cl\ C > K\ Cl\ C$   
 $An\ O\ C < K\ O\ C$  } muscles in more ad-  
vanced stage of degenera.

Uses of Electricity: <sup>1</sup>Diag. <sup>2</sup>Prog. & <sup>3</sup>Treat.

1. Diagnosis.

Paralysis <sup>paralysis</sup> ~~status~~ with <sup>1</sup>organic  
or <sup>2</sup>hysterical is exacts but is  
incurable

Paralysis <sup>1</sup>central (cut all above trophic  
cells of cord) or <sup>2</sup>peripheral: no rapid  
wasting of lesion of brain but from in-  
action, = rapid wasting if of cells & nerve

& show reaction of degeneration.

Degr of contraction varies w<sup>th</sup> position  
of poles, - at first is in equal  
then equal & finally reversal  
of original formula; by w<sup>ch</sup> facts  
L respond to any current & now  
muscle is dead.

Changes to faradic <sup>not over motor points.</sup> currents pre-  
cede the other changes; - first  
last to rapid faradic currents but  
to slow currents & finally to no  
faradic currents. - May thus  
diagnose peripheral from central facial  
palsy or deltoid mostly peripheral. - in

~~No response to faradic currents~~ children  
with palsy are anti polio myelitis.

- feeling or sensory neuroplegia from  
Syphilis (something worse).

Treat. - In paralysis, can only re-  
store muscle to normal power and  
perhaps stimulate N but can not  
affect N excitability.



2 factors of Central.      Central      Peripher.

Normal contract 10 x 10 = 100

close      "      0 (Brain) x 10 = 0

after time      ~~2~~ x 10 =

but the 10 has degenerated 2 or 2 x 2 = 4

but can not get any further than 20

$2 \times 10 = 20$

Of traumatic delirium. -

Of triphasic cells be partly gone the (ms)  
 easily go again after building them  
 up.

When use Electricity in Palsy: - Jose Hess  
 implies recent does no good as M is not  
 degenerated, & not to be used until  
 all irritation is passed. - Mark 4 weeks or longer  
 In Del-  
 -roid palsy not to be used too early  
 formulated & broken to them in 1 or 2 wks.

In Polio-myelitis - no inflam. in  
 ordinary cases but some have inflam.  
 use it at once

What currents to use? Beneficial  
power is in proportion to amount of  
contraction. - Rolle use currents  
produces most contraction with  
least pain.

Time of Praver - Work daily from 3 to 5  
min at first on 1 muscle increased grad-  
ually to 10 min. - 1 pole to motor points

For Jenny disease. - If from in-  
flam. Electric n.g. only good for neu-  
ralgia or <sup>rheumatic</sup> neuritis (not too early) but  
after a time as in scratches (tentative)  
will do good if it relieves pain for the  
time being, if in them even the Chem  
current does no good by faradic.

In subacute rheumatism often good.

In paresthesia & hysterical loss of sensation  
often does good but not of curative cause.  
use dry brushes ~~with~~ fails to obey Ohm law  
from point & goes off as little pole.

Farad of M. curv. - does no good but  
great harm - can not affect spinal  
cord -





Mood - ~~Am~~ April 3, 1888 <sup>①</sup>

Arnica.

Liner - for wounded feeling  
Hans - Witch hazel now  
used as perfume - very good  
for the rubbing in applying them.

Arnica can produce irrita-  
tion - internally produces ir-  
ritation & collapse.

Schithyol

Distill of fossil fishes

2 for - S. ammoniac Sulph

S. Potass Sulph.

Has 10% S - can freely penetrate  
the skin.

Use for Sulph of sub stances  
lyth with enlargement - in  
P. roscian very good, in Cocaine,  
in sprains, in glandular en-  
largement, soft lipomas,  
Of little or no value internally.

On crappulas wash by  $H_2O$ , follow  
by water, & then equal parts of  
Vintur & covered with batting.  
- Boils mix well with fatty sub-  
stances 5 to 15% - In crysi-  
- also 50% <sup>20% or more</sup> somewhat irritant.

### Dermulents.

Gross Arabic - of but little use.

Flexural - In making tea both  
 $H_2O$  get out the oil which is laxative,  
- Used in inflammation of Gastro-  
- intestinal tract, & - In quite minor  
- any no good for  $H_2O$  - N. 9 for Neph.

Colinus fulva - good.

Sassafras pills much used  
as radii for conjunctivitis.

Licorin - Exh glycerity - has  
glycerizin. - used in cough mix-  
ture for taste & action on glands.

Compd Lin perla is <sup>excellent</sup> <sub>locative</sub>

Poultices - means of applying  
warmth to cold with moisture.



(2)

Wood, - April 3, 1888.

Post-mortem found in hard white  
& shrunken, & fast-ent, if the  
death be late fatty deg. espe-  
cially in Kidney.

Loss of Consciousness due to direct  
action on cortex of Brain.

At full dose 15th & 16th at same  
time -

Depressing power to all higher tissues  
Reflex center in Spinal center now  
acted on thru 15th muscle.

Acts - only ~~externally~~ locally.

- It is local anaesthetic as in  
vomiting from <sup>excursion</sup> nervous sensibility

also  $\frac{1}{15}$  -  $\frac{1}{11}$  - In lividities  
diarrhoea is but minor.

Unpleasant <sup>at first</sup> - all dies if no in-  
flame to prevent - especially for  
N<sup>o</sup> diarrhoea.

In Antisepsis surgery - Wood

does not believe in spray.  
fzj extremely has caused death  
- watch the urine carefully for  
its first little smokiness  
Absorbed as carbolic in intest  
& also the.

Sulphate disappeared from  
urine, partly destroyed, & partly  
eliminated as Sulpho carbolic  
partly as Glycuronic acid.

Antidote is soluble sulphate  
e.g. in lacte as  $MgSO_4$  or  $K_2SO_4$   
or  $H_2SO_4$  dil. - In joints.

Hydrochinon also in urine  
~~and~~ pinky color not due to blood  
coloring matter.

In lungs - pseudo mucus in the  
bronchial tube.

From apoplexy - Odor - White color  
- urine - not hemiplegic.  
Convulsions are spinal  
In fact does paralyse vaso-motor center.  
It is pinky P. mening. & center lower incisors  
Rings at joints.



Flossid is good,

Stipiceum also is good.

Bread to mildy.

Overuse as in felon as in de-  
press the part.

Stimulating poultices contain  
a stimulating agent - as Excrements  
of Profluvium Sargolum, better is  
yeast poultice by mixing with  
equal parts of flossid to An-  
dian meal - to clean out.

Fatty Substances as vehicle  
for ointments - 3.

1. Lard + Olive Oil. - Lanolin  
<sup>cholesterin</sup>  
(cholesterin fat)

2. Castor Oil <sup>is mineral</sup> is perfectly bland &  
protects - is not as readily absorbed  
as in a time for here not used for  
Hq.

Lanolin prepared from Secret/Co  
keep wool of sheep soft - does not  
go back again on the skin - more  
volatile - vehicle for sublim to act on

Skin.

Antipyretic

To depress bodily temper is power.  
~~Aspirin~~ is not used as antipyretic  
but acts like Salicylic but is the  
most dangerous antipyretic.

- Only used as disinfectant, stands  
well to alcohol in causing death

fit to ffp.

Sympt<sup>s</sup>: local irrit, burning pain,  
tingling, pricking to ment dis-  
turbance.

Large dose - They fall early, un-  
conscious, covered with sweat  
course, to gasping irregular Resp.  
in 3 min.

In smaller dose death in 1-7 hr.  
nausea but early vomit, collapse  
mental apathy or delirium replaced  
by coma, Resp irregular for over  
death by failure of resp, - sense  
of dyspnea if lives, loss of motor  
power, skin at first yellow  
becoming purplish to black. - Some  
see hem. Haemoglobin.



①

Mood, April 7, 1884.

Sol Acid Compds.

Formed from Carb Acid is not officinal. Absorbed as salicylate in irritations as the salt in blood.

Sol acid soluble in ether & can not be found as such from the blood except in blood of asphyxia.

Elimination is very rapid in <sup>-25</sup> Drum, - & lasts for 8 hrs after last dose; and has tendency to accumulate as for 1 wk.

It is local irritant as in the stomach & on point of escape as burning urine & vom. sup. pressure or haematuric haemorrhage in using it in acute Bright's.

10-20 gr no sympt.

Larger dose - 20 injections, full  
mus, trismus aurium (1st evidence  
of phys action), <sup>2</sup>urine becomes  
greenish color unknown, but may  
be indican or pyrocatechin by pen-  
tast distinctive of sal acid.

In spec as sal acid in urin  
has salicylic acid.

- Preg dilate pupil, dyspnoea  
is very constant, pulse from  
first increased then diminished  
rate increase, the delirium  
then coma & death from as-  
phyxia of Resp cent.

Cat's body especially on D. 1000  
acts to approx cause delirium  
may last for long time & may  
be with hallucinations

Top dose - Same symptoms in mam-  
mal.

Circulation - (Prod dose not at  
all depressant & may increase



Mood, April 7-1884 (2).

$\frac{1}{2}$  has taken life <sup>continually</sup> during  
May be given in capsules  $\text{m} \times - 4 \text{ to } 6$   
a day

Salicin.

Breaks up into Sal acid and  
in urine is found as Salicylic  
acid.

It is less irritant & better taste.

It is broken up only partly &  
stays in Sal acid form much  
much used.

Salol.

1 atom of H of acid Sal is replaced  
by Phenol (acid carb).

Is nearly free from irritant prop-  
erty - much like oil of peppermint -  
the rest of bad taste.

As Salol is absorbed but by  
pancreatic juice is broken up  
into Sal acid & phenol without  
gash intense irritation - but  
in large dose urine becomes black-  
ish from Salicylic acid & its  
carbon compounds.

Salol } 36% Carb acid  
          } 64% Sal acid

It has distinct antirheumatic power but is less prompt & less efficient - good for subacute rheum & neurage & for rheumats - dose 45 grs

Salol appears as salicin acid in  $\frac{1}{2}$  hr but if it lies in stomach for some or weeks of walls of stomach.

### Naphthol-salol.

1 lb replaced by 2 lbs naphthol.

In indigestion is resolved into sal acid & beta naphthol.

### Venesectio

In acute cases infl. driven as Pneum of strong robust adults bleeding from arm may do good.

In acute cases infl. as in all fibrous pleurisy at first in the wet cup (duplex) & not dry cup (pneum or pulmonary congest as count in it)

In peritonitis - Leeches 100 A  
In Exhaustion with right sided heart failure as in Pneumonia or advanced typh. & milder not Pneum or meningitis



act press by v. m. stimulation & H<sub>2</sub>O<sub>2</sub> /  
T<sub>oxin</sub> - Card failure by direct  
action, - press low by act on v. m.  
syst as well as heart.

Sense of weakness & depression  
in full done by acting on N syst,  
low of M power & depression of reflexes.  
& marked cutaneous anaesthesia  
Ref. At first hurried <sup>(stim)</sup> later  
it is slow & shallow.

36 C 60 yrs can fall of temp  
in 1/2-1 hr & with sweating & is more  
certain than quinine but also fails,  
can arrest the sweating by stop & gain  
in but temp still falls; do not  
depress temp of normal man,  
but prevents it under exercise.  
Not used any more to lower  
body temp.

Most powerful agent for  
Rheumatism (Santal). by in-  
creasing Nitrogen elimination

is almost all forms is useful  
not only in acute & chronic powder  
also in Gamb (especially irregular)  
Tact to act in Stom on  
again it.

In acute Rhu - 1st day  
<sup>45-60</sup>  
~~30-40~~ grs 2nd day 50 grs more  
on 3rd, 4th begin again.

May give in capsules on full  
stomach but the acid form is  
worthwhile in salt.

- Sal of Pod

" " Gum

" " Methy 80% in Ol Sars.

Sal Soda  $\frac{1}{2}$  =

Sal Ammon - prepared thus

Take  $\frac{3}{4}$  lb acid to Symp and add  
Stio  $\frac{1}{2}$  lb Gum in acid dose  $\frac{1}{2}$  lb  
may give this in milk.

Ol Sars & all symptoms of Sal & pain



①

Mood, Apr 12-1888.

Antipyrene.

Crypt - sol in water.

Act, little irritative action of  
granules & tendency to vomit -  
less.

Large dose - In weakness &  
little lowering of pulse force  
and rate.

No death in normal man.

In animals:- Large dose causes  
convulsion with paralysis -  
never dies of cramp asphyxia  
but of paralytic asphyxia.

Convulsion said to be cerebral  
Motor N. - Slight influence in  
advanced poisoning but never  
any complete loss of power.

Sens N. - Paralyzes sensation at  
point of injection.

Spinal Act - depresses 11 or 8 pairs

Depressor muscle a little.  
Small den unaffected blood-  
Large " inena  
Tex " depressor  
Laid to rest powerfully on muscle  
of vessels - said to be haemostatic  
greater than Tr Ch Fr.

Rapidly absorbed & eliminated  
as antipyrene.

It takes for long time to act with  
bluish tinge by altering the haem-  
oglobin into methaemoglobin.

Ans. Chiefly as antipyretic  
In normal man gets uncertainly  
rise of temp at stage of convulsion.

In febrile man 20-30 yrs temp  
falls in  $\frac{1}{2}$  hr & down by 1 hr -  $1^{\circ}\text{C}$  3°  
& continues for 4 hr & then as nature  
of disease, with few sweating  
downy to with collapse, can  
arise sweating by atropine & repara-  
in to get temp falls, but  
not result of the sweating, nor



is it any effect <sup>blood</sup> on pressure.

Cause of fall of temp - due to decrease of heat production by acting on nerve centre controlling thermogenic function of the body.

Urea elimination is lessened in fever - checks nutrition from process.

Urea:- In fever it is very certain it makes fever more comfortable in pneumonia, typhoid & but not so good for the patient as cold bath for pain. Especially of use in those of the origin of that storm kind. In locomotor ataxia it is good.

In Rheumatism,

Not as good for Pains as Morphine, does not form habits nor does it change secretions as Morphine.

Is said to take away the Rheumatism pain & not interfere with con. treatment.

In convulsion disorder - Is

in Strychnie, or Epilepsy 1 out of 50.  
Occasionally acts very unfavorably  
as rapid cyanin collapse, loss of  
consciousness & profuse sweating.

Give 10 or  $\frac{1}{2}$  h. until vomits  
or 50 grs more taken.

~~Violent pain~~

May keep back measles.

Antifebrin -

Same effects but more tender  
& sleep. - more powerful - 10 to 20.

On general system - less is known  
than of Antipy. - cyanin also  
from methamyl. - loss of reflex.

Does not lessen no. of corpuscles.  
Krebs. phenomena.

Parado-phenol-sulphate in wine  
- Some say it changes with water.

Not. In form - In pain - In epi-  
-lepsy.