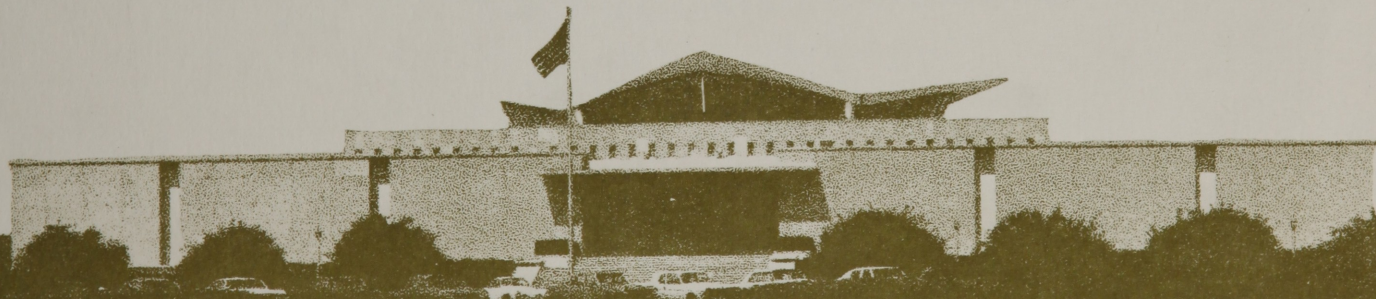
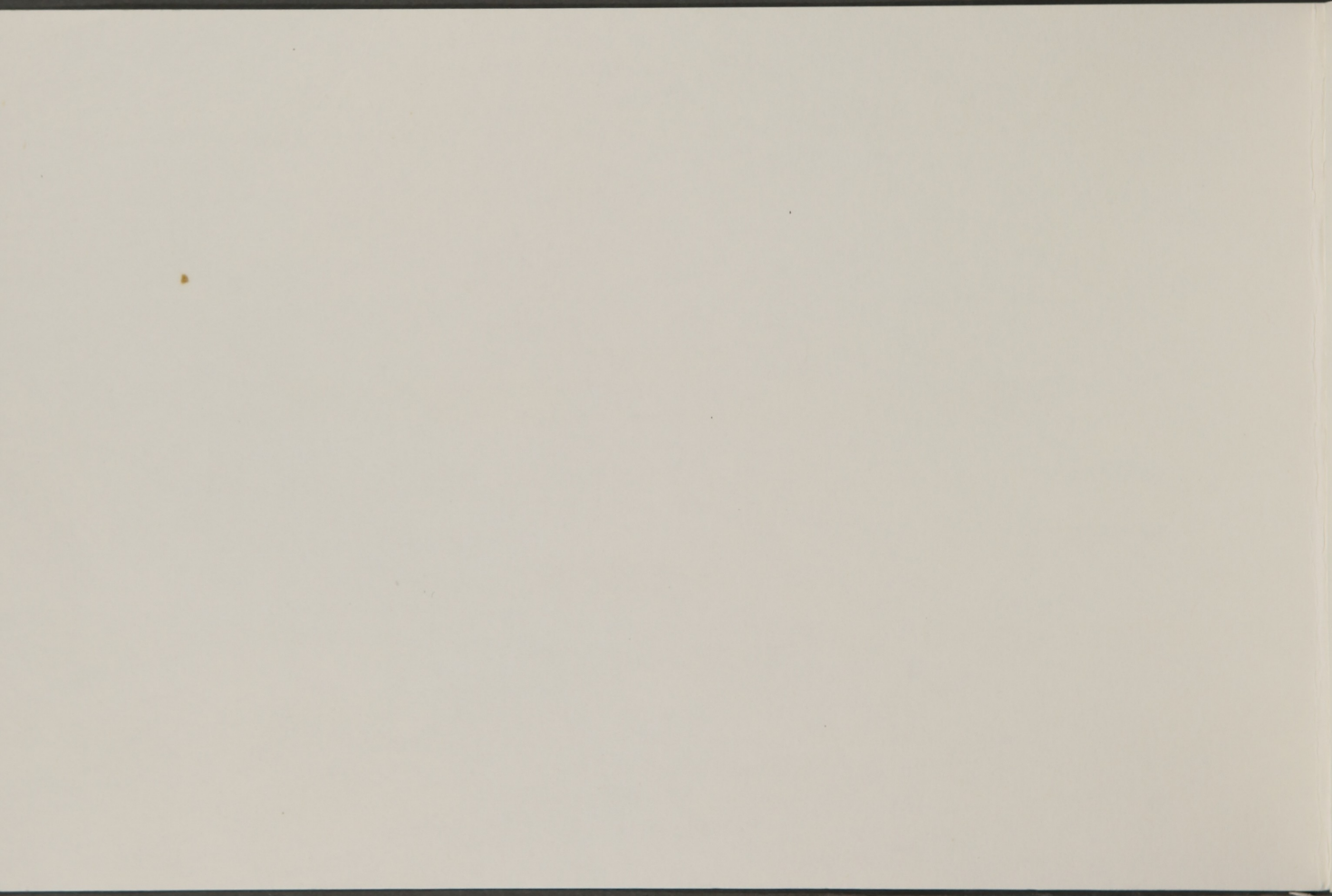
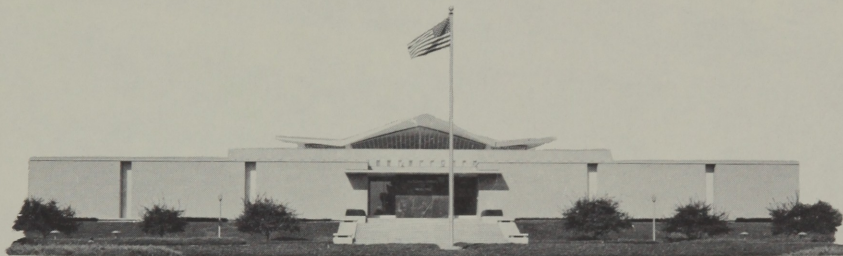


The National Library of Medicine



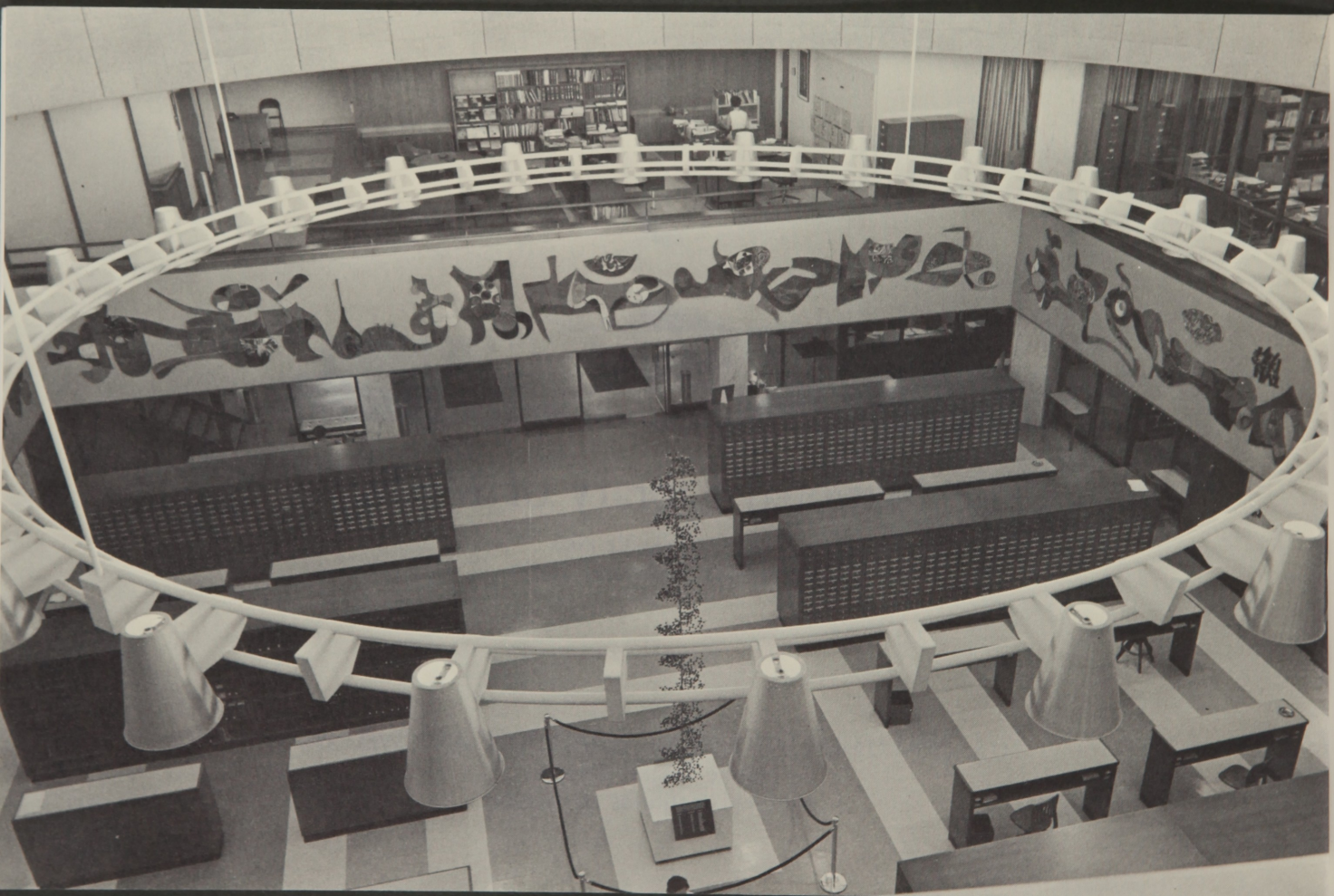




The National Library of Medicine

8600 Rockville Pike
Bethesda, Maryland 20014

U.S. DEPARTMENT OF HEALTH, EDUCATION, AND WELFARE
Public Health Service
National Institutes of Health



INTRODUCTION

The National Library of Medicine (NLM) in Bethesda, Maryland, the world's largest library in a single scientific field, is more than just a collection of materials; it is a service-oriented institution. If the Library's services are effectively utilized, most literature requests and information needs can be satisfied. This brochure is designed to acquaint you with the Library's history, programs, and methods for using its services. If more specific information is needed, write to the Office of Public Information, National Library of Medicine, 8600 Rockville Pike, Bethesda, Maryland 20014.



HISTORY

The Library was originally established in 1836 as the Library of the Surgeon General's Office. Its basic role was to serve the needs of military medical officers, and with small funds, the collection was mostly limited to material on clinical medicine and public health.

With the arrival in 1863 of Dr. John Shaw Billings, the Library's mission was expanded and gradually formalized. Medical publications were made available to physicians generally. The appearance in January 1879 of the first issue of *Index Medicus*, and, in 1880, of Volume I of the *Index-Catalogue of the Library of the Surgeon General's Office, United States Army*, marked the inception of a publication program which has continued with few interruptions to the present day. The Library's collections were enlarged from the 1,800 volumes of 1865, as reported by Billings, to 50,000 volumes and 60,000 pamphlets in 1880. His energetic program of acquisitions, by purchase, by exchange, and by gift—as at NLM today—steadily expanded both size and scope of the collection.



Dr. John Shaw Billings.

Following Billings' tradition, the Library has continued to pioneer in the rapid dissemination of information. Such revolutionary library technology as photoduplication for interlibrary loans and computerized information storage and retrieval were first introduced by NLM. Currently, the National Library of Medicine is planning for and developing biomedical communication networks which may eventually employ space satellites.

COLLECTION

The collections housed by the National Library of Medicine comprise nearly 1,400,000 books, journals, and other materials, including 350,000 monographs, 350,000 bound journal volumes, 315,000 theses, 172,000 pamphlets, 11,000 reels of microfilms, 67,000 portraits and illustrations, and 1,000 medical motion pictures, filmstrips, and television titles. Housed in the Library is one of the nation's largest medical history collections, with contents dating from the 11th to the mid-19th century. The NLM history of medicine and other collections may be consulted at the Library, Monday through Friday, 8:30 a.m.-9:00 p.m., and Saturday, 8:30 a.m.-5:00 p.m. (These hours are somewhat modified during the summer months.)

Top to Bottom: Book Stacks, Reading Room, Videotape Viewing Area.







Film Collection at the National Medical Audiovisual Center.

HOW TO USE THE COLLECTION

Most of the literature in the collection is available on loan through any library: Interlibrary loan requests should be submitted through a local medical library where the staff will fill out the prescribed forms, giving a complete bibliographic citation for each request. Requests may be submitted either by mail or by TWX. The Library's TWX number is 710 824 9619. Motion pictures will be loaned to health professionals on request to the National Medical Audiovisual Center, 2111 Plaster Bridge Road, N.E., Atlanta, Georgia 30324.

Interior of Library. Engraved illustration from: Florinus, Franciscus Philippus, *pseud.* Oeconomus Prudens et Legalis . . ., Nuremberg, 1722.
From the History of Medicine Picture Collection, NLM.

MEDLARS

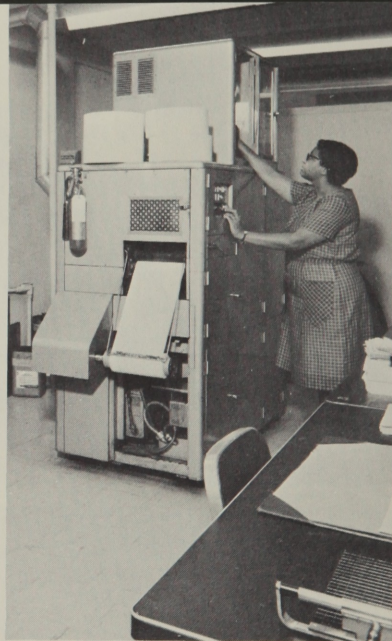
The Library's computer-based Medical Literature Analysis and Retrieval System (MEDLARS) was established to achieve rapid bibliographic access to NLM's vast store of biomedical information. It became operational in January 1964 with the publication of the first computer-produced issue of *Index Medicus*, a comprehensive, subject-author index to articles from approximately 2,300 of the world's biomedical journals. The principal objective of MEDLARS is to provide references to the biomedical literature for researchers, clinicians, and other health professionals. This is accomplished through:

- (1) preparation of citations for publication in *Index Medicus* and the *NLM Current Catalog*,
- (2) preparation of other recurring bibliographies on specialized subjects of wide interest,
- (3) preparation of retrospective, one-time bibliographies (demand searches), produced by high-speed computer-search through the files of journal article citations, in response to requests submitted by health professionals, and
- (4) publication and distribution of selected demand searches (designated "Literature Searches") on a wide basis. A complete list of bibliographies is available on request from NLM.





Genetic Code Exhibit—NLM Lobby



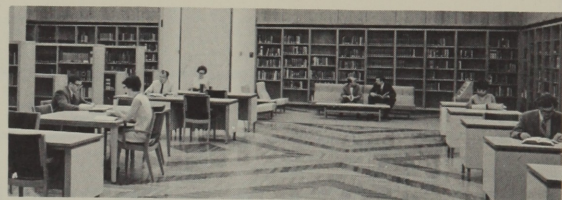
Xerox Copyflo—Photoduplication Section



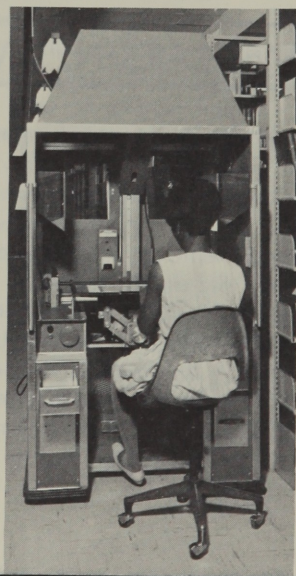
Incunabula—History of Medicine Division



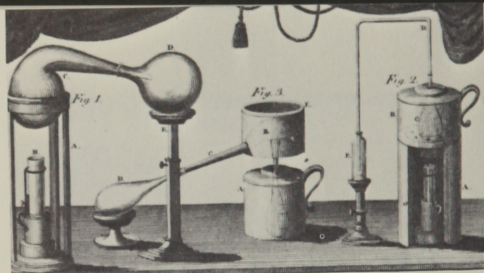
Computer Console—Medlars II



Reading Room—History of Medicine Division



Mobile Camera—Photoduplication Section



Chemical Apparatus. Engraved Illustration from J. Parkinson. *Chemical Pocket Book*, Philadelphia, 1802.

From the History of Medicine Picture Collection, NLM.

MEDLARS/NETWORK

To provide more rapid dissemination of biomedical information, the Library has been developing a network arrangement through which MEDLARS and interlibrary loan services can be shared more efficiently by medical libraries. In the United States, the network consists of 11 MEDLARS stations and 8 regional medical libraries. Although the National Library of Medicine remains the heart of the network, more and more services are being provided directly by regional libraries. Users may request demand searches through a local library.

TOXICOLOGY INFORMATION PROGRAM

This program was begun in 1967 to provide a national focal point of access to information in toxicology. A quarterly *Toxicity Bibliography* began publication in January 1968 (see publications list). Other program objectives include organizing a standardized toxicology vocabulary, maintaining a roster of expert advisers in toxicology, identifying and characterizing files of information on toxicology, and establishing a computer-based system incorporating all information from those centers and other information sources.



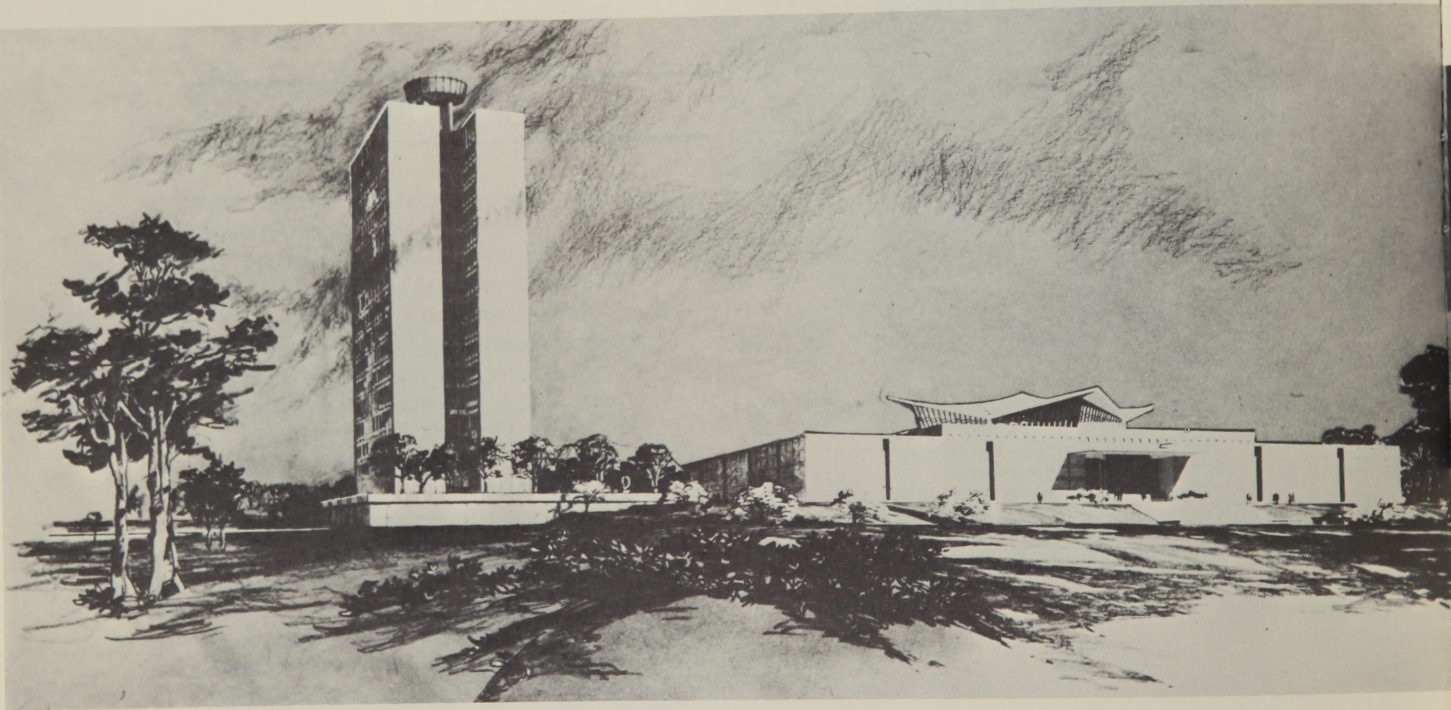
The Chymist (Detail). Interior of a Laboratory, Engraved After a Painting by David Teniers the Younger (1610-1690). From the History of Medicine Picture Collection, NLM.

GRANTS

The Medical Library Assistance Act of 1965 authorized the Library to administer financial grant programs in the following six areas:

- training of medical librarians and other health information specialists
- special scientific projects
- research on new techniques and systems for the organization and dissemination of biomedical information
- improvement of health science library resources
- development of regional medical libraries
- selected biomedical publication projects.

For further information on any of these programs, write to the Associate Director for Extramural Programs, National Library of Medicine, 8600 Rockville Pike, Bethesda, Maryland 20014.



Architectural Rendering of Proposed
Lister Hill National Center for Biomed-
ical Communications.



Remote Information Systems Center
—Lister Hill National Center for
Biomedical Communications.

LISTER HILL NATIONAL CENTER FOR BIOMEDICAL COMMUNICATIONS

The Library moved into the space age when the 90th Congress passed a joint resolution authorizing the establishment of this biomedical communications center, named in honor of the former senator from Alabama. It serves as the focal point within the Department of Health, Education, and Welfare for communications systems and network projects. Eventually, the most sophisticated communications satellites may be employed by the Center.

PUBLICATIONS

NLM's bibliographies, catalogs, and other guides to medical literature may be purchased from the *Superintendent of Documents, U.S. Government Printing Office, Washington, D. C. 20402*. (Please do not send orders to the National Library of Medicine.) Remittance should accompany orders, and foreign orders should include an additional 25% of the domestic price to cover mailing. The prices quoted below are those in effect for 1969; an updated list is available from the Office of Public Information, NLM.

Index Medicus

Index Medicus is published monthly as a bibliographic listing of references to current articles from approximately 2,300 of the world's biomedical journals. Each issue contains a subject and name section and a separate *Bibliography of Medical Reviews*. *Medical Subject Headings* (\$3.00) is included as Part 2 of the January issue. Price: \$63.00 (\$78.75 foreign); single issues \$5.00.

Cumulated Index Medicus

Volume 9 (1968) is a cumulation in one author volume and four subject volumes of the approximately 207,000 citations to articles appearing in *Index Medicus* in 1968. Also included are *Medical Subject Headings*, *List of Journals Indexed in Index Medicus*, and *Bibliography of Medical Reviews*. Price: \$72.25 (\$80.55 foreign).

List of Journals Indexed in Index Medicus

The 1969 *List of Journals Indexed* contains four listings

of the 2,300 journals indexed in *Index Medicus*: title, abbreviation, subject, and geographical. Price: \$1.25.

Abridged Index Medicus

A monthly bibliography, based on articles from 100 English-language journals, designed for the needs of the individual practitioner and libraries of small hospitals and clinics. To begin January 1970. Annual subscription price: \$12.00 (\$15.00 foreign); \$1.00 for individual issues.

Medical Subject Headings, 1969 Edition

The 1969 edition of *Medical Subject Headings* is published as Part 2 of the January 1969 issue of *Index Medicus*. The approximately 7,400 subject headings in the 1969 MeSH are arranged alphabetically, with cross references, and in categorized lists. Available separately; price: \$3.00.

Monthly Bibliography of Medical Reviews

The *Monthly BMR* is a series designed to provide quick guidance to the latest reviews in the journal literature of biomedicine. Each monthly issue duplicates the material appearing in the *Bibliography of Medical Reviews* section of the corresponding monthly issue of *Index Medicus*. Price for one year's subscription (twelve monthly issues): \$2.25 (\$2.75 foreign).

NLM Current Catalog

Bibliographic listing of citations to publications catalogued by the Library. Issued beginning January 1970 in three forms: (a) monthly (name section only), (b) quarterly (non-cumulating, subject and name sections), and

(c) annual cumulation (subject and name sections). Prices: (a) 12 monthly issues—\$7.50 (\$9.50 foreign); (b) 4 quarterly issues—\$13.00 (\$16.25 foreign); and (c) annual cumulation—\$16.25 (\$20.35 foreign). Annual cumulations for 1968 and 1969—\$14.25 (\$17.85 foreign) each.

Toxicity Bibliography

The quarterly *Toxicity Bibliography* covers the adverse and toxic effects of drugs and chemicals reported in the approximately 2,300 journals indexed for *Index Medicus*. Price: \$14.00 per year (\$17.50 foreign); single issues \$3.50.

A Catalogue of Sixteenth Century Printed Books in the National Library of Medicine

Over 4,800 rare sixteenth century printed volumes from NLM's History of Medicine Division collection are listed. Some 1,500 printers and publishers and 188 different printing centers in fourteen European countries are indexed in detail. Casebound. 1967. 698 pages. Price: \$5.25.

Bibliography of the History of Medicine

Number 3, 1967, is the third of an annual series of bibliographies on the history of medicine and related sciences, professions, and institutions. Prices: Number 2, 1966 (Public Health Service Publication No. 1540-2) \$1.25; Number 3, 1967 (PHS Pub. No. 1540-3) \$2.75.

International Bibliography of Medicolegal Serials 1736-1967

An annotated listing of serials published on legal medicine and related fields. Includes six indexes (title, editors, publishers and sponsors, subject, geographical, and chronological). 1969. Price: \$1.25.

Prints Relating to Dentistry

Includes reproductions of 67 prints illustrating the history of dentistry from the Library's extensive collection of pictures of nonclinical medical interest. Dates of the prints range from the 15th to 20th centuries. Public Health Service Publication No. 1605. 1967. 36 pages. Price: \$0.50.

MEDLARS: 1963-67

Comprehensive description of NLM's computer system, MEDLARS (Medical Literature Analysis and Retrieval System). 76 pages with illustrations. Public Health Service Publication No. 1823. 1968. Price: \$0.75.

National Medical Audiovisual Center Catalog

The 1968 *NMAC Catalog* lists audiovisuals, available on short-term free loan to health professionals, from NLM's Atlanta-based National Medical Audiovisual Center. National Institutes of Health Publication No. 451. 97 pages. Price: \$0.75.

Film Reference Guide for Medicine and Allied Sciences

Published annually for the Federal Advisory Council on Medical Training Aids. The 1968 edition contains information on approximately 2,700 films. Public Health Service Publication No. 487, Revised 1968. 386 pages. Price: \$2.75. (1969 Supplement, price: \$0.75.)

NLM Classification

The National Library of Medicine Classification: A Scheme for the Shelf Arrangement of Books in the Field of Medicine and Its Related Sciences. 3rd Edition, 1964, with Supplementary Pages (1969). Public Health Service Publication No. 1108, Reprinted 1969. Price: \$2.75.

RECURRING BIBLIOGRAPHIES

The National Library of Medicine, through its computer-based MEDLARS (Medical Literature Analysis and Retrieval System), periodically produces lists of citations to journal articles in specialized biomedical fields. Most of these lists, termed "Recurring Bibliographies," are printed and distributed by nonprofit professional organizations and other government agencies with whom the Library cooperates.

(1) The *Bibliography on Medical Education* is published monthly in the *Journal of Medical Education* (\$15.00 per year). Cumulations for 1964-65, 1966, and 1967 are available from the American Association of Medical Colleges, 2530 Ridge Avenue, Evanston, Illinois, 60201 for \$2.00 each.

(2) The quarterly *Cerebrovascular Bibliography* is prepared under the auspices of the Joint Council Subcommittee on Cerebrovascular Disease, National Heart Institute, National Institutes of Health, Bethesda, Maryland 20014. Distribution is limited. For information write to the Executive Secretary, Joint Council Subcommittee on Cerebrovascular Disease.

(3) The monthly bibliography, *Fibrinolysis, Thrombolysis, and Blood Clotting*, is distributed by the National Heart Institute. For information write to Dr. James M. Stengle, National Heart Institute, National Institutes of Health, Bethesda, Maryland 20014.

(4) The monthly *Index of Rheumatology* is available from the American Rheumatism Association Section of The Arthritis Foundation, 1212 Avenue of the Americas, New York, New York 10036. Price: \$6.00 per year (\$7.00 foreign); \$3.50 to members of the American Rheumatism Association.

(5) The quarterly *Index to Dental Literature* is sold by the American Dental Association, 211 East Chicago Avenue, Chicago, Illinois 60611. Price: \$20.00 for four cumulative issues (including annual cumulation); \$10.00 for annual cumulation alone.

(6) The quarterly *International Nursing Index* is sold by the American Journal of Nursing Company, 10 Columbus Circle, New York, New York 10019. Price: \$15.00 for four cumulative issues (including cumulation); \$12.50 for annual cumulations.

(7) The quarterly *Artificial Kidney Bibliography* is published by the National Institute of Arthritis and Metabolic Diseases. For information write to the Scientific Communications Officer, National Institute of Arthritis and Metabolic Diseases, National Institutes of Health, Bethesda, Maryland 20014. The bibliography is sold by the Superintendent of Documents, U.S. Government Printing Office, Washington, D.C. 20402. Price: \$1.00 per year (\$1.25 foreign); single issues, \$0.30.

(8) The bimonthly *Endocrinology Index* is published by the National Institute of Arthritis and Metabolic Diseases, National Institutes of Health, Bethesda, Maryland 20014. The bibliography is sold by the Superintendent of Documents, U.S. Government Printing Office, Washington, D.C. 20402. Price: \$16.00 per year (\$20.00 foreign); single issues, \$2.75.

(9) The *Bibliography of Surgery of the Hand*, a quarterly, is published and distributed by the American Society for Surgery of the Hand. For information write to John P. Adams, M.D., Chairman, American Society for Surgery of the Hand, 2150 Pennsylvania Ave., N.W., Washington, D.C. 20037.

(10) The *Anesthesiology Bibliography*, a bimonthly, is published and distributed by the American Society of Anesthesiologists. For information write: Wood Library, Museum of Anesthesiology, American Society of Anesthesiologists, 515 Busse Highway, Park Ridge, Illinois 60068.

(11) The quarterly *Toxicity Bibliography* is published by the National Library of Medicine and distributed by the Superintendent of Documents, U.S. Government Printing Office, Washington, D.C. 20402. Price: \$14.00 per year (\$17.50 foreign); single issues, \$3.50.

(12) The monthly *Current Bibliography of Epidemiology* (CuBE) is published by the American Public Health Association. For information write to the Editor, CuBE, American Public Health Association, 1740 Broadway, New York, New York 10019.

(13) The *Neurosurgical Biblio-Index*, a quarterly, is published by the American Association of Neurological Surgeons. For information write to the Subscription Manager, *Journal of Neurosurgery*, Suite 1230, 251 East Chicago Avenue, Chicago, Illinois 60611.

(14) The *Cranio-Facial—Cleft Palate Bibliography* is published quarterly by the American Cleft Palate Association. For information write to the Chairman, Nomenclature Committee, Box 3098, Division of Plastic, Maxillofacial and Oral Surgery, Duke University Medical Center, Durham, North Carolina 27706.

(15) The *Index of Investigative Dermatopathology and Dermatology* is published monthly by the Universities Associated for Research and Education in Pathology, Inc. For information write to the UAREP, 9650 Rockville Pike, Bethesda, Maryland 20014.

(16) The *Recurring Bibliography of Hypertension* is published bimonthly by the American Heart Association, Inc. For subscription information write: The American Heart Association, Inc., 44 East 23rd Street, New York, New York 10010.

National Library of Medicine
8600 Rockville Pike
Bethesda, Maryland 20014

Name _____

Address _____

City & State _____

Zip Code

Please send me the following:

- Publications lists
- Guide to MEDLARS Services
- Further information on library programs
(specify):



NATIONAL LIBRARY OF MEDICINE

8600 Rockville Pike
Bethesda, Maryland 20014

Telephone 301 656-4000

TWX 710 824 9619

HOURS	Reading Room	Monday-Friday	8:30 a.m.-9 p.m.	Summer Hours	
		Saturday	8:30 a.m.-5 p.m.	Monday-Saturday	8:30 a.m.-5 p.m.
		Sunday	closed	Sunday	closed
	History of Medicine Collection		Monday-Saturday		8:30 a.m.-4:45 p.m.

The Library is closed on national holidays.

TOURS	Monday-Friday	3:00 p.m.	EXHIBITS	Rare books, manuscripts, prints on the history of medicine, and displays of medical subjects are regularly exhibited in the lobby. Visitors are welcome.
	Call 301 496-1030 or write to the Public Information Office for advance registration or special arrangements.			

FILMS Films on the Library and MEDLARS may be viewed by appointment and are available on loan from the National Medical Audiovisual Center (Annex), Station K, Atlanta, Georgia 30324.

DEPARTMENT OF
HEALTH, EDUCATION, AND WELFARE

PUBLIC HEALTH SERVICE
NATIONAL INSTITUTES OF HEALTH
NATIONAL LIBRARY OF MEDICINE
8600 ROCKVILLE PIKE
BETHESDA, MARYLAND 20014

OFFICIAL BUSINESS



POSTAGE AND FEES PAID
U.S. DEPARTMENT OF H.E.W.

U.S. DEPARTMENT OF HEALTH, EDUCATION, AND WELFARE
Public Health Service
National Institutes of Health
Public Health Service Publication No. 1533 (Revised 1969)